

FORCK TWO DEPARTURE (RNAV)  
(FORCK2.FORCK) 04FEB16

DALLAS-FORT WORTH, TEXAS  
DALLAS-FORT WORTH INTL (DFTW)

**TOP ALTITUDE:**  
**RWY 17C/R, 18L/R,**  
**35C/L, 36L/R: 10000**  
**RWY 31L/R: 5000**

TAKEOFF MINIMUMS

Rwys 31L/R: Standard.  
Rwys 17C/R, 18L/R, 35L/C, 36L/R:  
Standard with minimum climb of 500' per  
NM to 1120.

D-ATIS DEP 135.925  
CLNC DEL 128.25  
CPDLC  
GND CON  
121.65 121.8 (EAST)  
121.85 (WEST)  
DFW TOWER  
126.55 127.5 (EAST)  
124.15 134.9 (WEST)  
REGIONAL DEP CON  
118.55 290.35

ZACHH ✧

SWDIA ✧

TRYTN ✧

ZERLU ✧

JAYXX ✧

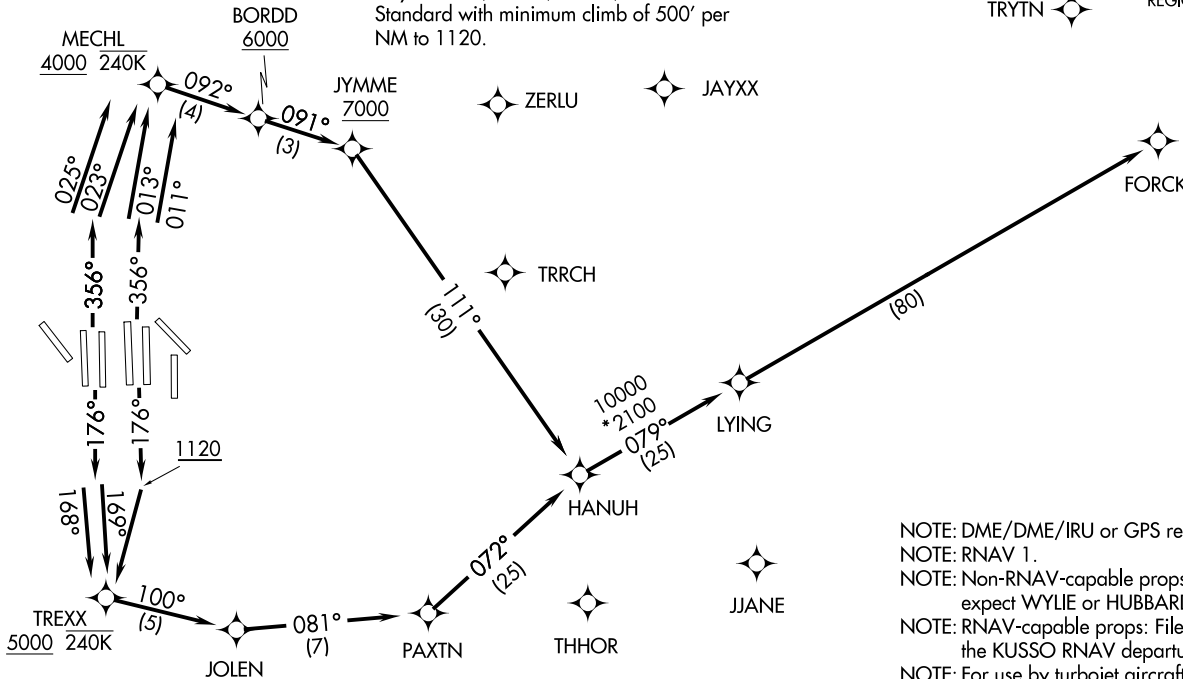
N



FORCK ✧

TRRCH ✧

MRSSH ✧



NOTE: DME/DME/IRU or GPS required.  
NOTE: RNAV 1.  
NOTE: Non-RNAV-capable props: File and expect WYLIE or HUBBARD departure.  
NOTE: RNAV-capable props: File and expect the KUSSO RNAV departure.  
NOTE: For use by turbojet aircraft only.  
NOTE: RADAR required.

NOTE: Chart not to scale.

(NARRATIVE ON FOLLOWING PAGE)

(FORCK2.FORCK) 18032  
FORCK TWO DEPARTURE (RNAV)

AL-6039 (FAA)

DALLAS-FORT WORTH INTL (DFTW)  
DALLAS-FORT WORTH, TEXAS



DEPARTURE ROUTE DESCRIPTION

TAKEOFF RUNWAYS 17C/R: Climb heading 176° to 1120, then direct to cross TREXX at or above 5000, then on track 100° to JOLEN, then on track 081° to PAXTN, then on track 072° to HANUH, thence. . . .

TAKEOFF RUNWAY 18L: Climb heading 176° to intercept course 169° to cross TREXX at or above 5000, then on track 100° to JOLEN, then on track 081° to PAXTN, then on track 072° to HANUH, thence. . . .

TAKEOFF RUNWAY 18R: Climb heading 176° to intercept course 168° to cross TREXX at or above 5000, then on track 100° to JOLEN, then on track 081° to PAXTN, then on track 072° to HANUH, thence. . . .

TAKEOFF RUNWAY 35C: Climb heading 356° to intercept course 011° to cross MECHL at or above 4000, then on track 092° to cross BORDD at or above 6000, then on track 091° to cross JYMME at or above 7000, then on track 111° to HANUH, thence. . . .

TAKEOFF RUNWAY 35L: Climb heading 356° to intercept course 013° to cross MECHL at or above 4000, then on track 092° to cross BORDD at or above 6000, then on track 091° to cross JYMME at or above 7000, then on track 111° to HANUH, thence. . . .

TAKEOFF RUNWAY 36L: Climb heading 356° to intercept course 025° to cross MECHL at or above 4000, then on track 092° to cross BORDD at or above 6000, then on track 091° to cross JYMME at or above 7000, then on track 111° to HANUH, thence. . . .

TAKEOFF RUNWAY 36R: Climb heading 356° to intercept course 023° to cross MECHL at or above 4000, then on track 092° to cross BORDD at or above 6000, then on track 091° to cross JYMME at or above 7000, then on track 111° to HANUH, thence. . . .

. . . .on track 079° to LYING, then on track 079° to FORCK. Maintain 10000, expect filed altitude ten minutes after departure.

TAKEOFF RUNWAY 31L/R: Climb heading assigned by ATC, expect RADAR vectors to HANUH, thence. . . .

. . . .on track 079° to LYING, then on track 079° to FORCK. Maintain 5000, expect filed altitude ten minutes after departure

SC-2, 07 OCT 2021 to 04 NOV 2021

SC-2, 07 OCT 2021 to 04 NOV 2021