

GARLAND ONE DEPARTURE (GARL1.TTT) 17JUN21 DALLAS-FORT WORTH INTL (DFW)

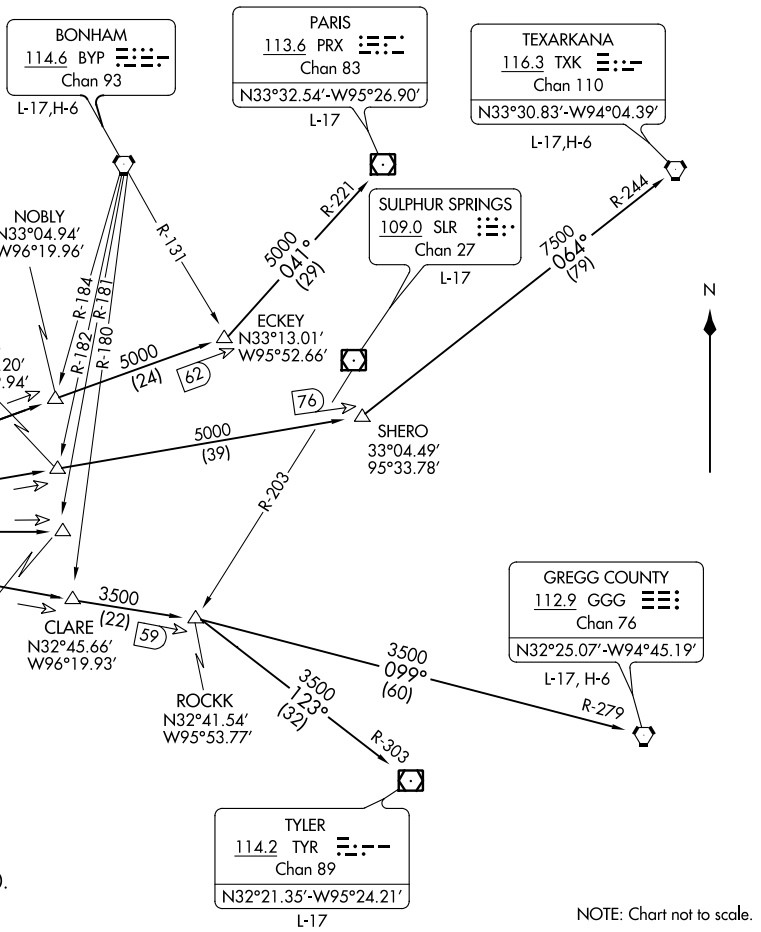
D-ATIS DEP
135.925
CLINC DEL
128.25
CPDLC
GND CON
121.65 121.8 (EAST)
121.85 (WEST)
DFW TOWER
126.55 127.5 (EAST)
124.15 134.9 (WEST)
REGIONAL DEP CON
118.55 290.35

TOP ALTITUDE:
Rwys 13 L/R, 17 L/C/R, 18 L/R,
35 L/C/R, 36 L/R: 1000
Rwys 31 L/R: 5000

MAVERICK
113.1 TTT
Chan 8
N32°52.15'-W97°02.43'

L-17
NOTE: SOLDO TRANSITION: ATC assigned.
NOTE: RADAR required.
NOTE: For all aircraft requesting FL230 and below.
NOTE: For all aircraft requesting FL240 and above expect DALLAS departure.
NOTE: DME required.
NOTE: Jets maintain 240K until leaving 5000.
TAKEOFF MINIMUMS
Rwys 13L/R, 17L/C/R, 18L/R, 31L/R, 35L/C, 36L/R: Standard.
Rwy 35R: Standard with minimum climb of 245' per NM to 1200.

(NARRATIVE ON FOLLOWING PAGE)



(GARL1.TTT) 21168 DALLAS-FORT WORTH INTL (DFW) DALLAS-FORT WORTH, TEXAS AL-6039 (FAA)

GARLAND ONE DEPARTURE



DEPARTURE ROUTE DESCRIPTION

TAKEOFF RUNWAYS 31L/R: Climb on assigned heading, maintain 5000 thence....

TAKEOFF RUNWAYS 13 L/R, 17L/C/R, 18L/R, 35L/C/R, 36L/R: Climb on assigned heading, maintain 10000 thence....

....on vectors to appropriate route, unless otherwise advised maintain assigned altitude and expect filed altitude 10 minutes after departure.

GREGG COUNTY TRANSITION (GARL1.GGG): From over TTT VOR/DME on TTT R-094 to ROCKK, then on GGG R-279 to GGG VORTAC.

PARIS TRANSITION (GARL1.PRX): From over TTT VOR/DME on TTT R-064 to ECKEY, then on PRX R-221 to PRX VOR/DME.

SOLDO TRANSITION (GARL1.SOLDO): From over TTT VOR/DME on TTT R-084 to SOLDO.

TEXARKANA TRANSITION (GARL1.TXK): From over TTT VOR/DME on TTT R-074 to SHERO, then on TXK R-244 to TXK VORTAC.

TYLER TRANSITION (GARL1.TYR): From over TTT VOR/DME on TTT R-094 to ROCKK, then on TYR R-303 to TYR VOR/DME.

SC-2, 07 OCT 2021 to 04 NOV 2021

SC-2, 07 OCT 2021 to 04 NOV 2021