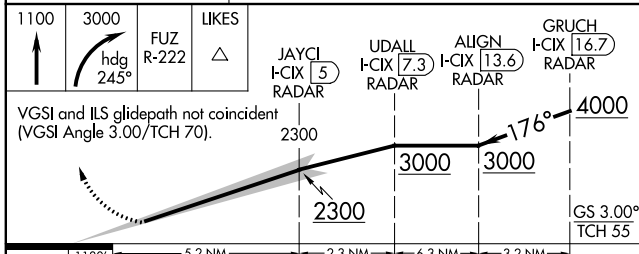
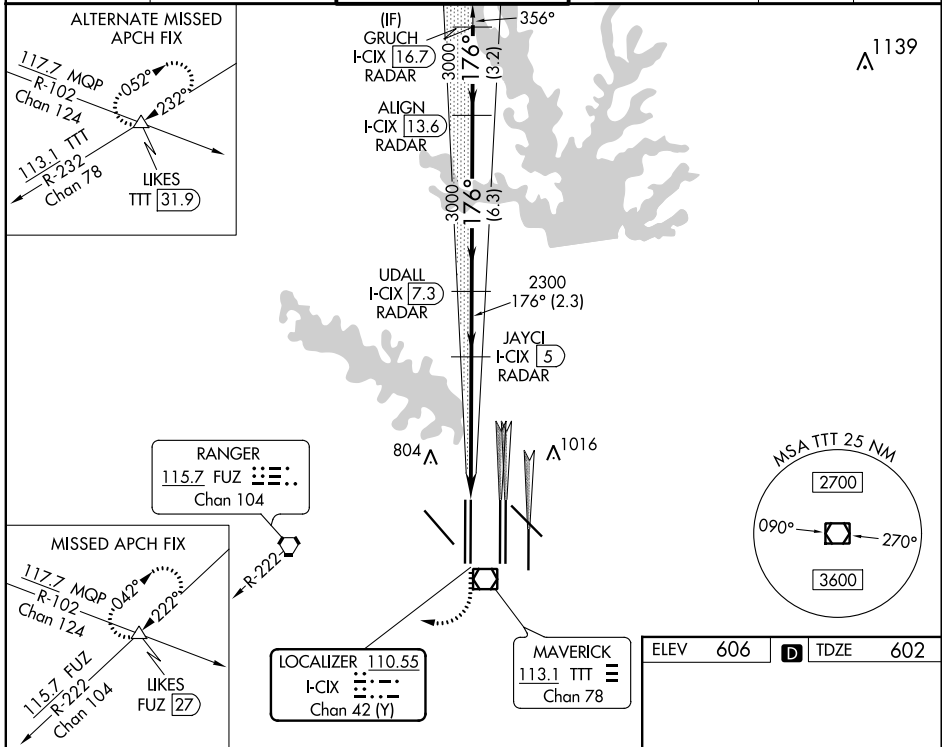


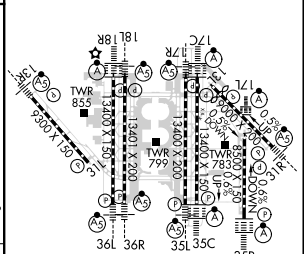
LOC/DME I-CIX 110.55 Chan 42(Y)	APP CRS 176°	Rwy Idg TDZE Apt Elev	13401 602 606
---	------------------------	-----------------------------	--

ILS RWY 18L (SA CAT I & II)
DALLAS-FORT WORTH INTL (DFW)

RADAR required for procedure entry. DME or RADAR required.		MALS R	MISSED APPROACH: Climb to 1100, then climbing right turn to 3000 on heading 245° and FUZ VORTAC R-222 to LIKES INT/FUZ 27 DME and hold.			
<p>Requires specific OPSPEC, MSPEC, or LOA approval. Simultaneous approach authorized with Rwy 17L/C/R.</p>						
D-ATIS ARR 123.775 DEP 135.925	REGIONAL APP CON 118.425	DFW TOWER 126.55 127.5 EAST 124.15 134.9 WEST		GND CON 121.65 121.8 EAST 121.85 WEST	CLNC DEL 128.25	CPDLC



ELEV 606	D TDZE 602
-----------------	--------------------------



CATEGORY	A	B	C	D
S-ILS 18L	SA CAT I	RA 158/14	150 DA 752	
S-ILS 18L	SA CAT II	RA 115/12	100 DA 702	

SA CATEGORY I & II ILS - SPECIAL AIRCREW & AIRCRAFT CERTIFICATION REQUIRED

HIRL all Rwys
REIL Rwys 13L and 31L
TDZ/CL all Rwys except 13L and 31L

SC-2, 07 OCT 2021 to 04 NOV 2021

SC-2, 07 OCT 2021 to 04 NOV 2021