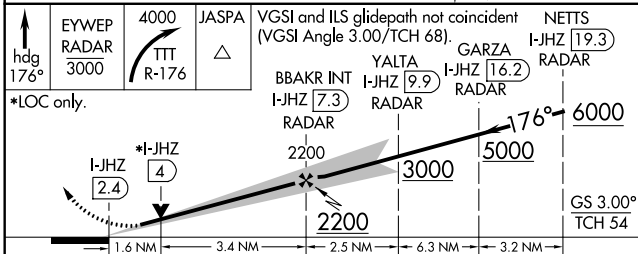
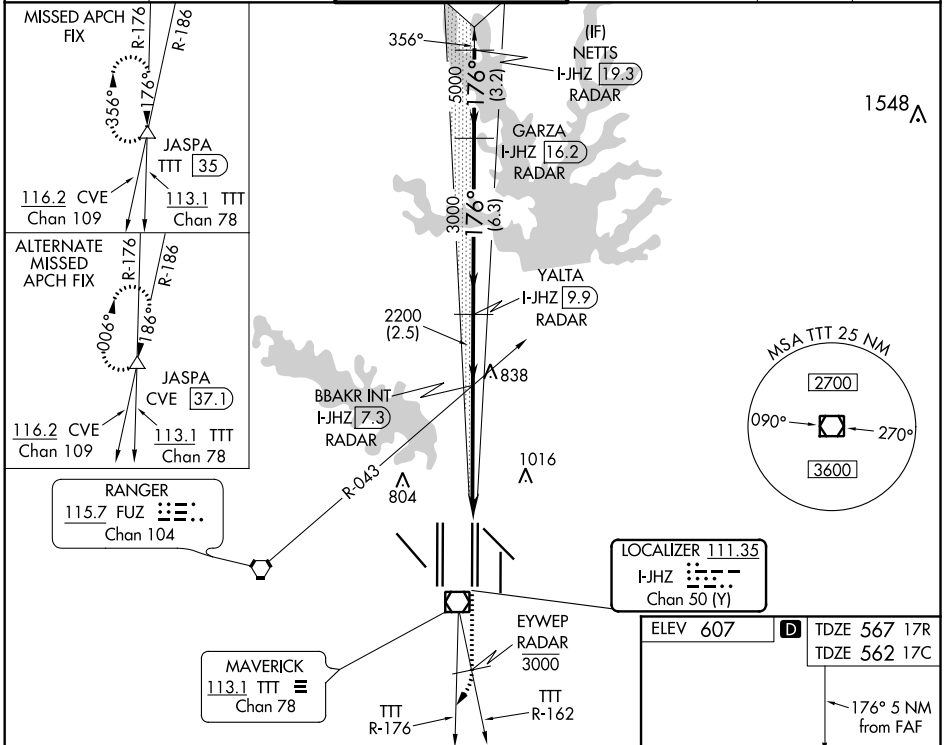


| | | | |
|---|------------------------|--|--|
| LOC/DME I-JHZ 111.35 Chan 50 (Y) | APP CRS 176° | Rwy 17R Idg 13400 TDZE 567 Apt Elev 607 | Rwy 17C Idg 13400 TDZE 562 Apt Elev 607 |
|---|------------------------|--|--|

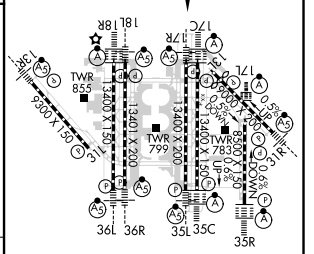
ILS or LOC RWY 17R

DALLAS-FORT WORTH INTL (DFW)

| | | | | | | |
|---|------------------------------------|---|----------------|---|---------------------------|-------|
| DME and RADAR required. | | Rwy 17R MALSR | Rwy 17C ALSF-2 | MISSED APPROACH: Climb on heading 176° to cross EYWEP/RADAR at or below 3000, then climbing right turn to 4000 on TTT VOR/DME R-176 to JASPA/TTT 35 DME and hold. | | |
| Simultaneous approach authorized with Rwy 17L, 18L/R. | | | | | | |
| D-ATIS ARR 123.775 DEP 135.925 | REGIONAL APP CON 127.075 | DFW TOWER 126.55 127.5 EAST 124.15 134.9 WEST | | GND CON 121.65 121.8 EAST 121.85 WEST | CLNC DEL 128.25 | CPDLC |



| | |
|--------------------|---------------------------------------|
| ELEV 607 | D TDZE 567 17R TDZE 562 17C |
| 176° 5 NM from FAF | |



| CATEGORY | A | B | C | D |
|--------------|---------|---------------|---------------|-----------------------|
| S-ILS 17R | | 767/18 | 200 (200-1/2) | |
| S-LOC 17R | 1140/24 | 573 (600-1/2) | 1140-1 1/4 | 573 (600-1 1/4) |
| SIDESTEP 17C | 1140-1 | 578 (600-1) | 1140-1 1/2 | 1140-2 578 (600-2) |

HIRL all Rwys
REL Rwys 13L and 31L
TDZ/CL all Rwys except 13L and 31L

SC-2, 07 OCT 2021 to 04 NOV 2021

SC-2, 07 OCT 2021 to 04 NOV 2021