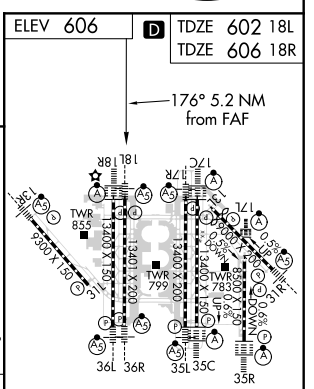
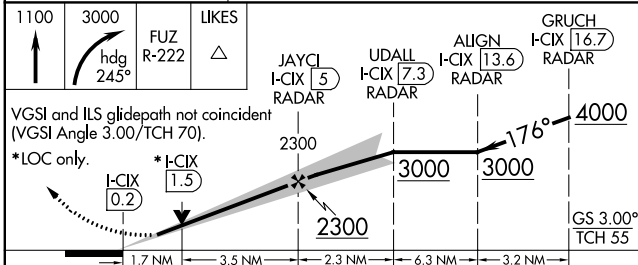
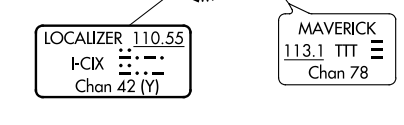
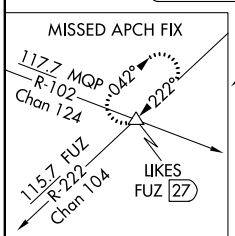
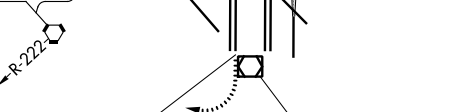
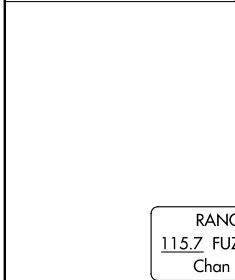
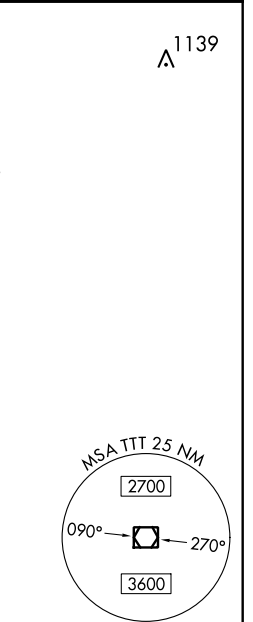
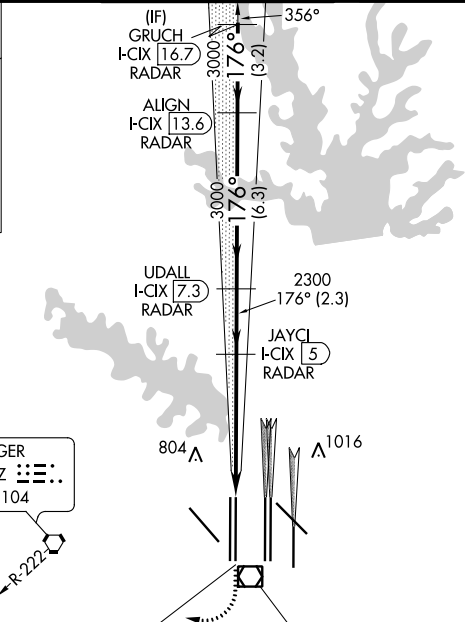
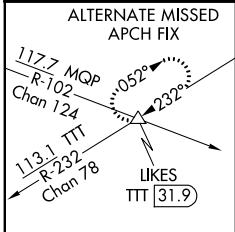


LOC/DME I-CIX <b>110.55</b> Chan <b>42 (Y)</b>	APP CRS <b>176°</b>	Rwy Idg TDZE Apt Elev	18L <b>13401</b> <b>602</b> <b>606</b>	18R <b>13400</b> <b>606</b> <b>606</b>
--	------------------------	-----------------------------	---	---

# ILS or LOC RWY 18L

DALLAS-FORT WORTH INTL (DFW)

RADAR required for procedure entry. DME or RADAR required.		Rwy 18L MALSR	Rwy 18R ALSF-2	MISSED APPROACH: Climb to 1100, then climbing right turn to 3000 on heading 245° and FUE VORTAC R-222 to LIKES INT/FUZ 27 DME and hold.
⚠ Simultaneous approach authorized with Rwy 17L/C/R. For inop ALS, increase S-LOC 18L Cat C/D and Sidestep 18R Cat C/D visibility to 1¼ mile. Inop table does not apply to Sidestep 18R Cats A and B.				
D-ATIS ARR <b>123.775</b> DEP <b>135.925</b>	REGIONAL APP CON <b>118.425</b>	DFW TOWER <b>126.55 127.5</b> EAST <b>124.15 134.9</b> WEST		GND CON <b>121.65 121.8</b> EAST <b>121.85</b> WEST
				CLNC DEL <b>128.25</b>
				CPDLC



CATEGORY	A	B	C	D
S-ILS 18L	802/18 200 (200-½)			
S-LOC 18L	1220/24 618 (700-½)	1220-1⅜ 618 (700-1⅜)		
SIDESTEP 18R	1220/50 614 (700-1)	1220-1⅜ 614 (700-1⅜)	1220-1½ 614 (700-1½)	

FAF to MAP 5.2 NM					
Knots	60	90	120	150	180
Min:Sec	5:12	3:28	2:36	2:05	1:44

SC-2, 07 OCT 2021 to 04 NOV 2021

SC-2, 07 OCT 2021 to 04 NOV 2021