

LOC/DME I-PKQ 110.3 Chan 40	APP CRS 356°	Rwy 35C Idg 13400 TDZE 563 Apt Elev 607	Rwy 35L Idg 13400 TDZE 564 Apt Elev 607
--	------------------------	--	--

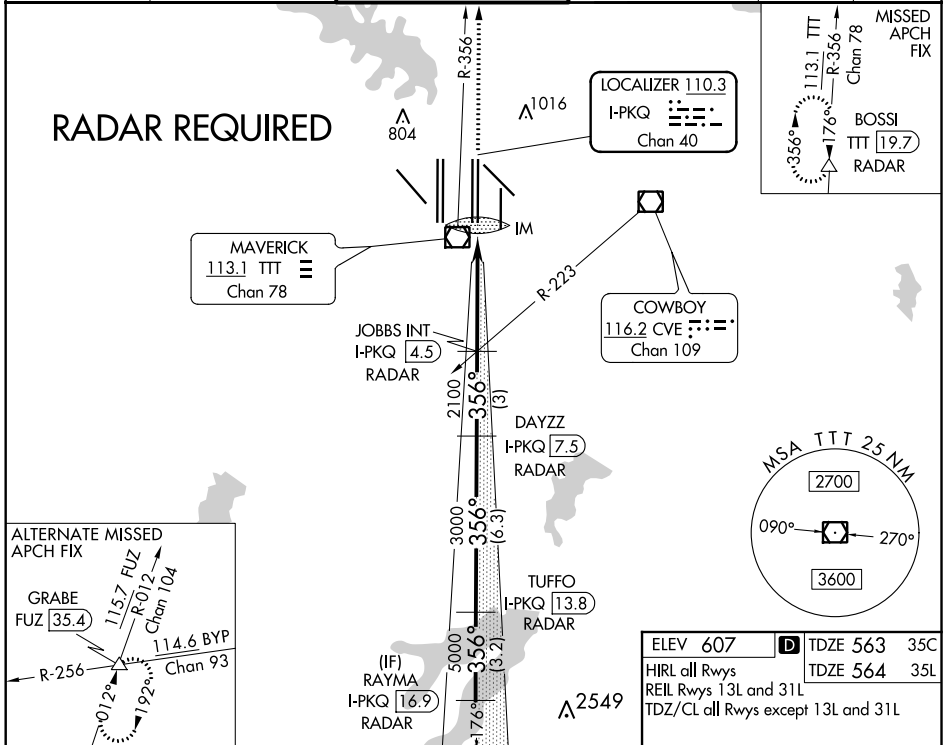
ILS or LOC RWY 35C

DALLAS-FORT WORTH INTL (DFW)

▽ Inoperative table does not apply to Sidestep Rwy 35L Cats A and B. DME or RADAR required. Simultaneous approach authorized with Rwy 35R, Rwy 36L/R.

Rwy 35C ALSF-2	Rwy 35L MALSR	MISSED APPROACH: Climb to 3000 on TTT VOR/DME R-356 to BOSSI/TTT 19.7 DME/RADAR and hold.
----------------	---------------	---

D-ATIS ARR 123.775 DEP 135.925	REGIONAL APP CON 127.075	DFW TOWER 126.55 127.5 EAST 124.15 134.9 WEST	GND CON 121.65 121.8 EAST 121.85 WEST	CLNC DEL 128.25	CPDLC
--	------------------------------------	---	---	---------------------------	-------



3000 ↑ TTT R-356	BOSSI △	VGSI and ILS glidepath not coincident (VGSI Angle 3.00/TCH 76).	RAYMA I-PKQ 16.9 RADAR	
*LOC only	JOBB'S INT I-PKQ 4.5 RADAR	DAYZZ I-PKQ 7.5 RADAR	TUFFO I-PKQ 13.8 RADAR	
IM	1	2100	3000	
0.1 NM	3.5 NM	3 NM	6.3 NM	
			356°	
			5000	
			6000	
			GS 3.00° TCH 59	
CATEGORY	A	B	C	D
S-ILS 35C	763/18		200 (200-½)	
S-LOC 35C	1000/24	437 (400-½)	1000/40	437 (400-¾)
SIDESTEP 35L	1000/55		436 (400-1)	
			1000-1½ 436 (400-1½)	

ELEV 607	D	TDZE 563 35C
HIRL all Rwys		TDZE 564 35L
REIL Rwys 13L and 31L		
TDZ/CL all Rwys except 13L and 31L		

356° 4.6 NM from FAF

FAF to MAP 4.6 NM					
Knots	60	90	120	150	180
Min:Sec	4:36	3:04	2:18	1:50	1:32

SC-2, 07 OCT 2021 to 04 NOV 2021

SC-2, 07 OCT 2021 to 04 NOV 2021