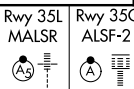


LOC/DME I-UWX 111.35 Chan 50 (Y)	APP CRS 356°	Rwy 35L Idg 13400 TDZE 564 Apt Elev 607	Rwy 35C Idg 13400 TDZE 563 Apt Elev 607
--	------------------------	--	--

ILS or LOC RWY 35L

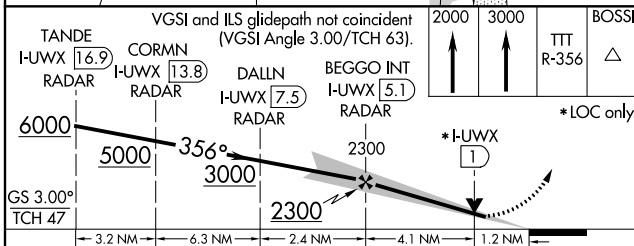
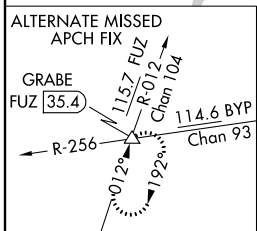
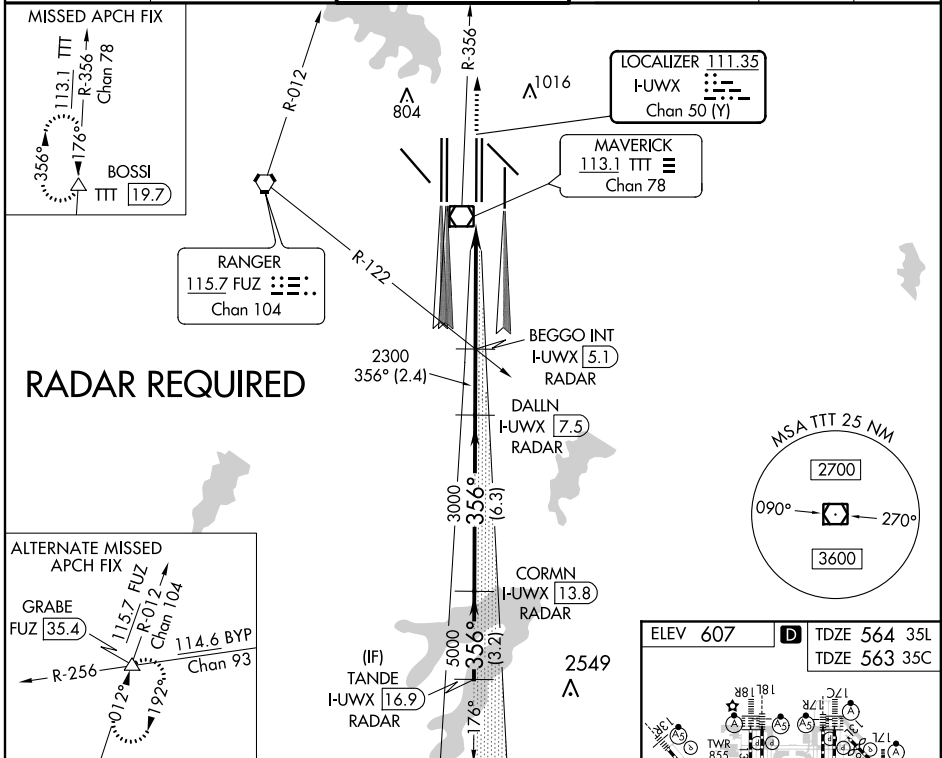
DALLAS-FORT WORTH INTL (DFW)

▼ DME or RADAR required. Simultaneous approach authorized with Rwy 36 L/R and Rwy 35R.
Inop table does not apply to Sidestep Rwy 35C.

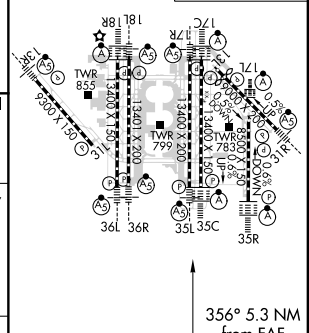


MISSED APPROACH: Climb to 2000 then climb to 3000 on TTT VOR/DME R-356 to BOSSI/TTT 19.7 DME and hold.

D-ATIS ARR 123.775 DEP 135.925	REGIONAL APP CON 127.075	DFW TOWER 126.55 127.5 EAST 124.15 134.9 WEST		GND CON 121.65 121.8 EAST 121.85 WEST	CLNC DEL 128.25	CPDLC
--	------------------------------------	---	--	---	---------------------------	-------



ELEV 607	TDZE 564 35L
	TDZE 563 35C



GS 3.00° TCH 47	3.2 NM	6.3 NM	2.4 NM	4.1 NM	1.2 NM
CATEGORY	A	B	C	D	
S-ILS 35L	764/18 200 (200-1/2)				
S-LOC 35L	1000/24	436 (400-1/2)	1000/40	436 (400-3/4)	
SIDESTEP 35C	1000-1	437 (400-1)	1000-1 1/2	437 (400-2)	1000-2

HIRL all Rwys					
REIL Rwys 13L and 31L					
TDZ/CL all Rwys except 13L, and 31L					
FAF to MAP 5.3 NM					
Knots	60	90	120	150	180
Min:Sec	5:18	3:32	2:39	2:07	1:46

SC-2, 07 OCT 2021 to 04 NOV 2021

SC-2, 07 OCT 2021 to 04 NOV 2021