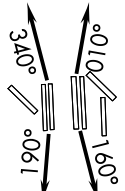


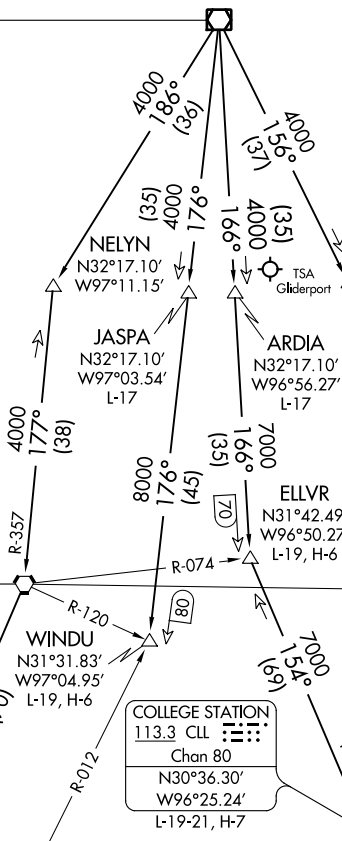
JOE POOL THREE DEPARTURE

TOP ALTITUDE:
RWYS 13L/R, 17L/C/R, 18L/R,
35L/C/R, 36L/R: 10000
RWYS 31L/R: 5000

D-ATIS DEP 135.925
CLNC DEL 128.25
CPDLC
GND CON
121.65 121.8 (EAST)
121.85 (WEST)
DFW TOWER
126.55 127.5 (EAST)
124.15 134.9 (WEST)
REGIONAL DEP CON
125.125 353.95 (Rwys 17C/R, 18L/R)
126.475 363.15 (Rwys 36R/L)
118.55 290.35 (Rwys 35L/C)



MAVERICK
113.1 TTT
Chan 78
N32°52.15'
W97°02.43'



WACO
115.3 ACT
Chan 100
N31°39.73'
W97°16.14'
L-19, H-6

WINDU
N31°31.83'
W97°04.95'
L-19, H-6

COLLEGE STATION
113.3 CLL
Chan 80
N30°36.30'
W96°25.24'
L-19-21, H-7

HOARY
N30°34.63'
W97°46.52'
L-19-21, H-7

CENTEX
112.8 CWK
Chan 75

SAN ANTONIO
116.8 SAT
Chan 115
N29°38.64'-W98°27.68'
L-19, H-7

NAVASOTA
115.9 TNV
Chan 106

NOTE: RADAR and DME required.
NOTE: Props: Expect KEENE or TRI-GATE departure.
NOTE: Maintain 240K until leaving 5000.

TAKEOFF MINIMUMS
Rwys 13L/R, 17L/C/R, 18L/R, 31L/R,
35L/C, 36L/R: Standard.
Rwy 35R: Standard with a minimum climb
of 240' per NM to 1200.

(NARRATIVE ON FOLLOWING PAGE)

NOTE: Chart not to scale.

SC-2, 07 OCT 2021 to 04 NOV 2021

SC-2, 07 OCT 2021 to 04 NOV 2021

JOE POOL THREE DEPARTURE

JOE POOL THREE DEPARTURE

DEPARTURE ROUTE DESCRIPTION

- TAKEOFF RUNWAYS 31L/R: Climb on assigned heading, maintain 5000, thence....
- TAKEOFF RUNWAYS 13L/R, 17L, 35R: Climb on assigned heading, maintain 10000, thence. . .
- TAKEOFF RUNWAYS 17C/R: Climb on heading 160°, maintain 10000, thence. . . .
- TAKEOFF RUNWAYS 18L/R: Climb on heading 190°, maintain 10000, thence. . . .
- TAKEOFF RUNWAYS 35L/C: Climb on heading 010°, maintain 10000, thence. . . .
- TAKEOFF RUNWAYS 36L/R: Climb on heading 340°, maintain 10000, thence. . . .

. . . .on vectors to appropriate route, unless otherwise advised maintain assigned altitude and expect filed altitude 10 minutes after departure.

ARDIA TRANSITION (JPOOL3.ARDIA): From over TTT VOR/DME on TTT R-166 to ARDIA.

BILEE TRANSITION (JPOOL3.BILEE): From over TTT VOR/DME on TTT R-156 to TORNN, then on TNV R-334 to BILEE.

BRDEN TRANSITION (JPOOL3.BRDEN): From over TTT VOR/DME on TTT R-156 to BRDEN.

COLLEGE STATION TRANSITION (JPOOL3.CLL): From over TTT VOR/DME on TTT R-166 to ELLVR, then on CLL R-334 to CLL VORTAC.

ELLVR TRANSITION (JPOOL3.ELLVR): From over TTT VOR/DME on TTT R-166 to ELLVR.

HOARY TRANSITION (JPOOL3.HOARY): From over TTT VOR/DME on TTT R-186 to NELYN, then on ACT R-357 to ACT VORTAC, then on ACT R-193 to HOARY.

JASPA TRANSITION (JPOOL3.JASPA): From over TTT VOR/DME on TTT R-176 to JASPA.

SAN ANTONIO TRANSITION (JPOOL3.SAT): From over TTT VOR/DME on TTT R-186 to NELYN, then on ACT R-357 to ACT VORTAC, then on ACT R-193 to HOARY, then on SAT R-024 to SAT VORTAC.

TORNN TRANSITION (JPOOL3.TORNN): From over TTT VOR/DME on TTT R-156 to TORNN.

WACO TRANSITION (JPOOL3.ACT): From over TTT VOR/DME on TTT R-186 to NELYN, then on ACT R-357 to ACT VORTAC.

WINDU TRANSITION (JPOOL3.WINDU): From over TTT VOR/DME on TTT R-176 to WINDU.

NOTE: ARDIA TRANSITION: ATC assigned.

NOTE: BRDEN TRANSITION: ATC assigned.

NOTE: BILEE TRANSITION: For non GPS or DME/DME/IRU equipped aircraft overflying BILEE INT then on the appropriate STAR to IAH, CXO, or DWH. Also for aircraft overflying BILEE INT on J87 to TNV VOR/DME.

NOTE: COLLEGE STATION TRANSITION: For piston and turboprop aircraft destined to HOU, EFD, GLS, or LBX. Also for all other aircraft types destined to all other Houston terminal area airports except IAH, CXO, or DWH.

NOTE: ELLVR TRANSITION: For turbojet aircraft destined to HOU, EFD, GLS, or LBX.

NOTE: JASPA TRANSITION: ATC assigned.

NOTE: SAN ANTONIO TRANSITION: For aircraft overflying Centex and San Antonio.

NOTE: TORNN TRANSITION: For GPS or DME/DME/IRU equipped aircraft overflying TORNN INT then on the appropriate RNAV STAR to IAH, CXO, or DWH. Also for aircraft landing in the Lafayette, Lake Charles, or Beaumont/Port Arthur terminal areas.

NOTE: WACO TRANSITION: For aircraft inbound to Waco or Gray terminal area airports.

NOTE: WINDU TRANSITION: For aircraft inbound to Austin or San Antonio terminal airports, aircraft should file and/or expect the BLEWE or MARCS arrival at WINDU.

SC-2, 07 OCT 2021 to 04 NOV 2021

SC-2, 07 OCT 2021 to 04 NOV 2021

JOE POOL THREE DEPARTURE

(JPOOL3.TTT) 17JUN21