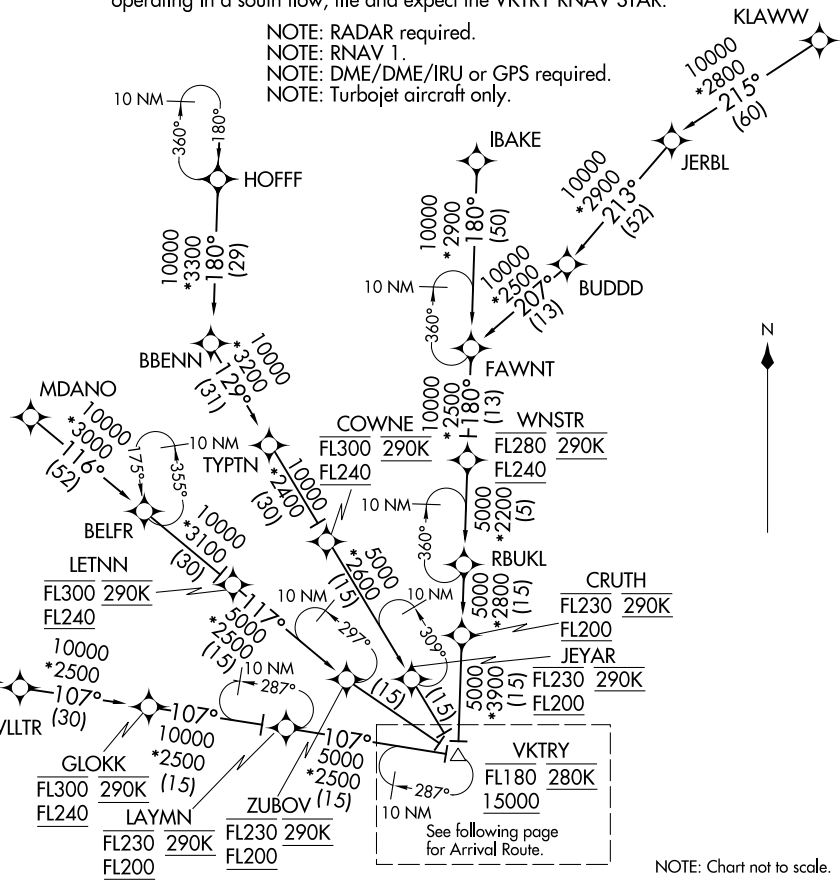


NOTE: For use when DFW is operating in a north flow. When DFW is operating in a south flow, file and expect the VKTRY RNAV STAR.

NOTE: RADAR required.
NOTE: RNAV 1.
NOTE: DME/DME/IRU or GPS required.
NOTE: Turbojet aircraft only.

D-ATIS ARR
123.775
REGIONAL APP CON
119.875 284.65

- BELFR TRANSITION (BELFR.JOVEM4):
(ATC assigned only.)
- FAWNT TRANSITION (FAWNT.JOVEM4):
(ATC assigned only.)
- HNKER TRANSITION (HNKER.JOVEM4):
- HOFF TRANSITION (HOFF.JOVEM4):
- IBAKE TRANSITION (IBAKE.JOVEM4):
(ATC assigned only.)
- KLAWW TRANSITION (KLAWW.JOVEM4):
(ATC assigned only.)
- MDANO TRANSITION (MDANO.JOVEM4):
(For OKC Terminal Area Departures only.)
- RBUKL TRANSITION (RBUKL.JOVEM4):
- TURKI TRANSITION (TURKI.JOVEM4):
- TYPTN TRANSITION (TYPTN.JOVEM4):
(ATC assigned only.)
- WLLTR TRANSITION (WLLTR.JOVEM4):
(ATC assigned only.)



(CONTINUED ON FOLLOWING PAGE)
(NARRATIVE ON FOLLOWING PAGE)

NOTE: Chart not to scale.

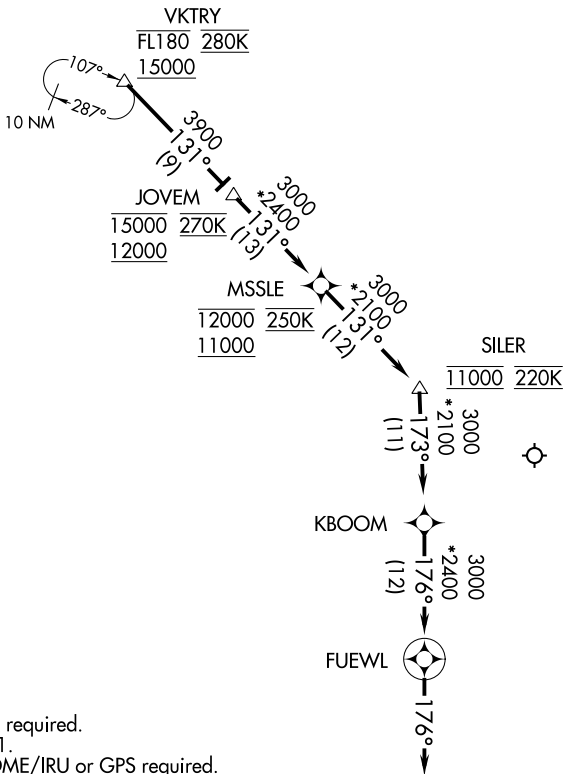
(VKTRY.JOVEM4) 17117

AL-6039 (FAA)

DALLAS-FORT WORTH INTL (DFW)
DALLAS-FORT WORTH, TEXAS

JOVEM FOUR ARRIVAL (RNAV) Arrival Route

D-ATIS ARR
123.775
REGIONAL APP CON
119.875 284.65



- NOTE: RADAR required.
- NOTE: RNAV 1.
- NOTE: DME/DME/IRU or GPS required.
- NOTE: Turbojet aircraft only.
- NOTE: For use when DFW is operating in a north flow.
When DFW is operating in a south flow, file and expect the VKTRY RNAV STAR.

NOTE: Chart not to scale.

ARRIVAL ROUTE DESCRIPTION

From VKTRY on track 131° to cross JOVEM between 12000 and 15000 and at 270K, then on track 131° to cross MSSLE between 11000 and 12000 and at 250K, then on track 131° to cross SILER at 11000 and at 220K, then on track 173° to KBOOM, then on track 176° to FUEWL, then on track 176°.

Expect RADAR vectors to final approach course.

JOVEM FOUR ARRIVAL (RNAV) Arrival Route

(VKTRY.JOVEM4) 26MAY16

DALLAS-FORT WORTH, TEXAS
DALLAS-FORT WORTH INTL (DFW)

SC-2, 07 OCT 2021 to 04 NOV 2021

SC-2, 07 OCT 2021 to 04 NOV 2021