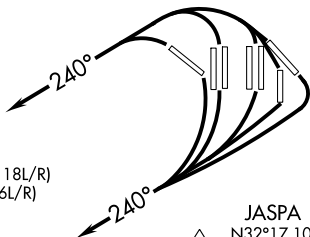


KEENE THREE DEPARTURE

DALLAS-FORT WORTH, TEXAS

D-ATIS DEP
 135.925
 CLNC DEL
 128.25
 CPDLC
 GND CON
 121.65 121.8 (EAST)
 121.85 (WEST)
 DFW TOWER
 126.55 127.5 (EAST)
 124.15 134.9 (WEST)
 REGIONAL DEP CON
 135.975 379.9 (Rwys 13L/R, 17L/C/R, 18L/R)
 118.1 306.95 (Rwys 31L/R, 35L/C/R, 36L/R)

**TOP ALTITUDE:
 2000**



JASPA
 △ N32°17.10'
 W097°03.54'

WACO
115.3 ACT
Chan 100
N31°39.73'-W097°16.14'
L-19, H-6

ELLVR
 N31°42.49'
 △ W096°50.27'
 H-6

WINDU
 N31°31.83' △
 W097°04.95'
 H-6

TORNH
 N31°31.22'
 W096°30.88'
 H-6
 △

BILEE
 △ N31°09.87'
 W096°22.89'
 L-19-21, H-6

NOTE: For non-Turbojet aircraft only.
 NOTE: RADAR required.
 NOTE: JASPA TRANSITION: ATC assigned.

COLLEGE STATION
113.3 CLL
Chan 80
N30°36.30'-W096°25.24'
L-19-21, H-7

NAVASOTA
115.9 TNV
Chan 106
N30°17.31'-W096°03.49'
L-19-21, H-7

TAKEOFF MINIMUMS

Rwys 13L/R, 17L/C/R, 18L/R, 31L/R, 35L/C, 36L/R: Standard.
 Rwy 35R: 300-1½ or standard with minimum climb of 221' per NM to 800, or alternatively, with standard takeoff minimums and a normal 200' per NM climb gradient, takeoff must occur no later than 1700' prior to DER.

NOTE: Chart not to scale.



DEPARTURE ROUTE DESCRIPTION

NON-TURBOJET AIRCRAFT ONLY

TAKEOFF ALL RUNWAYS: Climb on heading 240° for RADAR vectors to appropriate fix. Maintain 2000 and expect filed altitude 10 minutes after departure.

SC-2, 07 OCT 2021 to 04 NOV 2021

SC-2, 07 OCT 2021 to 04 NOV 2021