

KINGDOM NINE DEPARTURE (KING9.TTT) 17JUN21 DALLAS-FORT WORTH, TEXAS (DFW)

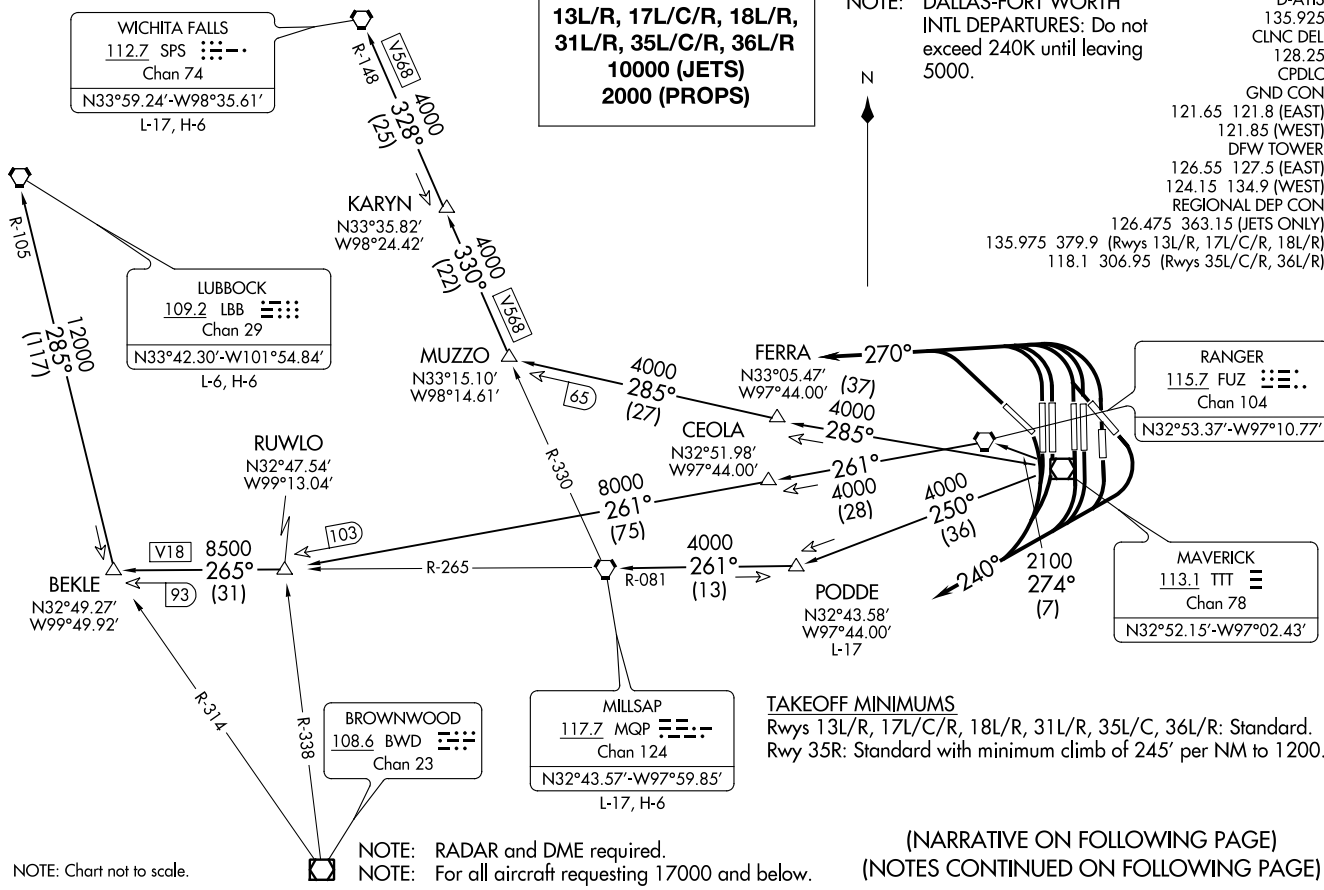
(KING9.TTT) 21280 AL-6039 (FAA) DALLAS-FORT WORTH INTL (DFW) DALLAS-FORT WORTH, TEXAS

TOP ALTITUDE:
13L/R, 17L/C/R, 18L/R,
31L/R, 35L/C/R, 36L/R
1000 (JETS)
2000 (PROPS)

NOTE: DALLAS-FORT WORTH INTL DEPARTURES: Do not exceed 240K until leaving 5000.



D-ATIS
135.925
CLNC DEL
128.25
CPDLC
GND CON
121.65 121.8 (EAST)
121.85 (WEST)
DFW TOWER
126.55 127.5 (EAST)
124.15 134.9 (WEST)
REGIONAL DEP CON
126.475 363.15 (JETS ONLY)
135.975 379.9 (Rwys 13L/R, 17L/C/R, 18L/R)
118.1 306.95 (Rwys 35L/C/R, 36L/R)



NOTE: Chart not to scale.

NOTE: RADAR and DME required.
NOTE: For all aircraft requesting 17000 and below.

TAKEOFF MINIMUMS
Rwys 13L/R, 17L/C/R, 18L/R, 31L/R, 35L/C, 36L/R: Standard.
Rwy 35R: Standard with minimum climb of 245' per NM to 1200.

(NARRATIVE ON FOLLOWING PAGE)
(NOTES CONTINUED ON FOLLOWING PAGE)

KINGDOM NINE DEPARTURE



DEPARTURE ROUTE DESCRIPTION

JETS

TAKEOFF RUNWAYS 13 L/R, 17L/C/R, 18L/R, 31L/R, 35L/C/R, 36L/R: Climb on assigned heading for vectors to appropriate route, thence. . . .

. . . .maintain 10000 and expect filed altitude 10 minutes after departure.

PROPS

TAKEOFF RUNWAYS 13L/R, 17L/C/R, 18L/R: Climb on heading 240° then on assigned heading for vectors to appropriate route, thence. . . .

TAKEOFF RUNWAYS 31L/R, 35L/C/R, 36L/R: Climb on heading 270° then on assigned heading for vectors to appropriate route, thence. . . .

. . . .maintain 2000 and expect filed altitude 10 minutes after departure.

LUBBOCK TRANSITION (KING9.LBB): From over TTT VOR/DME on TTT R-274 to FUZ VORTAC, then on FUZ R-261 to RUWLO, then on MQP R-265 to BEKLE, then on LBB R-105 to LBB VORTAC.

MILLSAP TRANSITION (KING9.MQP): From over TTT VOR/DME on TTT R-250 to PODDE, then on MQP R-081 to MQP VORTAC.

PODDE TRANSITION (KING9.PODDE): From over TTT VOR/DME on TTT R-250 to PODDE.

WICHITA FALLS TRANSITION (KING9.SPS): From over TTT VOR/DME on TTT R-285 to MUZZO, then on MQP R-330 and SPS R-148 to KARYN, then on SPS R-148 to SPS VORTAC.

NOTE: MILLSAP TRANSITION: For all aircraft overflying the MQP VORTAC westbound on V18 or direct.

NOTE: PODDE TRANSITION: ATC assigned.

NOTE: WICHITA FALLS TRANSITION: For all aircraft landing within the Wichita Falls terminal area or overflying the SPS VORTAC.

SC-2, 07 OCT 2021 to 04 NOV 2021

SC-2, 07 OCT 2021 to 04 NOV 2021