

MRSSH TWO DEPARTURE (RNAV) (MRSSH2.MRSSH) 04/FEB/16 DALLAS-FORT WORTH, TEXAS DALLAS-FORT WORTH INTL (DFW)

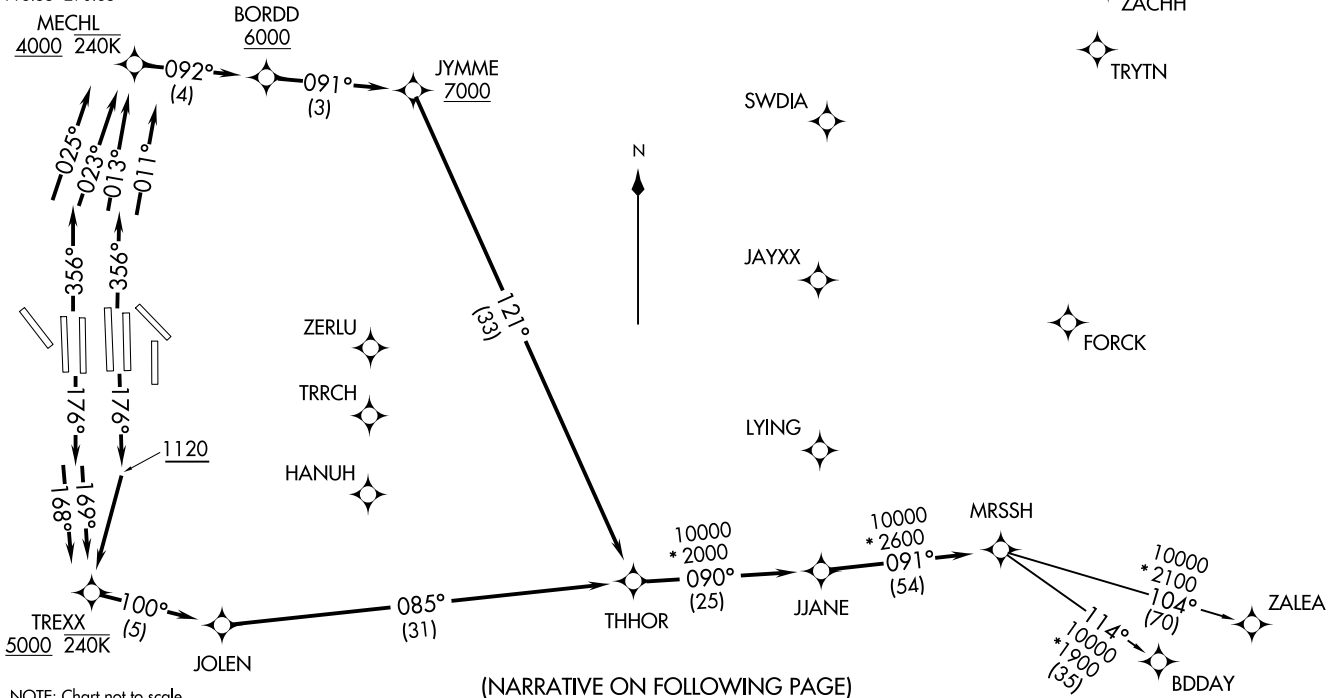
D-ATIS DEP 135.925  
CLNC DEL 128.25  
CPDLC  
GND CON  
121.65 121.8 (EAST)  
121.85 (WEST)  
DFW TOWER  
126.55 127.5 (EAST)  
124.15 134.9 (WEST)  
REGIONAL DEP CON  
118.55 290.35

NOTE: DME/DME/IRU or GPS required.  
NOTE: RNAV 1.  
NOTE: RADAR required.  
NOTE: Non-RNAV capable props file and expect WYLIE or HUBBARD DEPARTURE.  
NOTE: RNAV-capable props file and expect the KUSSO DEPARTURE.

TAKEOFF MINIMUMS

Rwys 31L/R: Standard.  
Rwys 17C/R, 18L/R, 35L/C, 36L/R: Standard with minimum climb of 500' per NM to 1120.

TOP ALTITUDE:  
RWY 17C/R, 18L/R,  
35C/L, 36L/R: 10000  
RWY 31L/R: 5000



NOTE: Chart not to scale.

(NARRATIVE ON FOLLOWING PAGE)

(MRSSH2.MRSSH) 18032  
MRSSH TWO DEPARTURE (RNAV) AL-6039 (FAA) DALLAS-FORT WORTH INTL (DFW) DALLAS-FORT WORTH, TEXAS



DEPARTURE ROUTE DESCRIPTION

TAKEOFF RUNWAYS 17C/R: Climb heading 176° to 1120, then direct to cross TREXX at or above 5000, then on track 100° to JOLEN, then on track 085° to THHOR, thence . . . .

TAKEOFF RUNWAY 18L: Climb heading 176° to intercept course 169° to cross TREXX at or above 5000, then on track 100° to JOLEN, then on track 085° to THHOR, thence . . . .

TAKEOFF RUNWAY 18R: Climb heading 176° to intercept course 168° to cross TREXX at or above 5000, then on track 100° to JOLEN, then on track 085° to THHOR, thence . . . .

TAKEOFF RUNWAY 35C: Climb heading 356° to intercept course 011° to cross MECHL at or above 4000, then on track 092° to cross BORDD at or above 6000, then on track 091° to cross JYMME at or above 7000, then on track 121° to THHOR, thence . . . .

TAKEOFF RUNWAY 35L: Climb heading 356° to intercept course 013° to cross MECHL at or above 4000, then on track 092° to cross BORDD at or above 6000, then on track 091° to cross JYMME at or above 7000, then on track 121° to THHOR, thence . . . .

TAKEOFF RUNWAY 36L: Climb heading 356° to intercept course 025° to cross MECHL at or above 4000, then on track 092° to cross BORDD at or above 6000, then on track 091° to cross JYMME at or above 7000, then on track 121° to THHOR, thence . . . .

TAKEOFF RUNWAY 36R: Climb heading 356° to intercept course 023° to cross MECHL at or above 4000, then on track 092° to cross BORDD at or above 6000, then on track 091° to cross JYMME at or above 7000, then on track 121° to THHOR, thence . . . .

. . . . then on track 090° to JJANE, then on track 091° to MRSSH, then on (transition). Maintain 10000, expect filed altitude ten minutes after departure.

TAKEOFF RUNWAYS 31L/R: Climb heading assigned by ATC, expect RADAR vectors to THHOR, thence . . . .

. . . . then on track 090° to JJANE, then on track 091° to MRSSH, then on (transition). Maintain 5000, expect filed altitude ten minutes after departure.

BDDAY TRANSITION (MRSSH2.BDDAY): (ATC assigned only).

ZALEA TRANSITION (MRSSH2.ZALEA)

SC-2, 07 OCT 2021 to 04 NOV 2021

SC-2, 07 OCT 2021 to 04 NOV 2021