

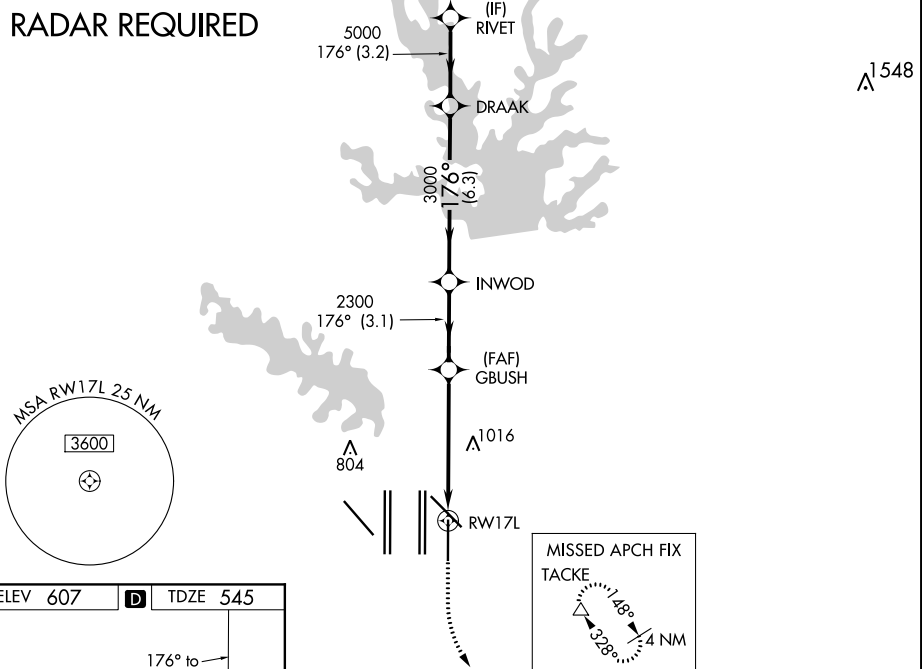
WAAS CH <b>40008</b> <b>W17B</b>	APP CRS <b>176°</b>	Rwy Idg TDZE Apt Elev	<b>8500</b> <b>545</b> <b>607</b>
--	------------------------	-----------------------------	---

# RNAV (GPS) RWY 17L

DALLAS-FORT WORTH INTL (DFW)

<p>▼ For uncompensated Baro-VNAV systems, LNAV/VNAV NA below -5°C (23°F) or above 54°C (130°F). DME/DME RNP-0.3 NA. Simultaneous approach authorized with Rwy 17C/R and Rwy 18L/R. LNAV procedure NA during simultaneous operations. Use of FD or AP providing RNAV track guidance required during simultaneous operations.</p>		<p>ALSF-2</p>	<p>MISSED APPROACH: Climb to 1020 then climbing left turn to 3000 direct TACKE and hold.</p>		
D-ATIS ARR <b>123.775</b> DEP <b>135.925</b>	REGIONAL APP CON <b>119.4</b>	DFW TOWER <b>126.55 127.5</b> EAST <b>124.15 134.9</b> WEST	GND CON <b>121.65 121.8</b> EAST <b>121.85</b> WEST	CLNC DEL <b>128.25</b>	CPDLC

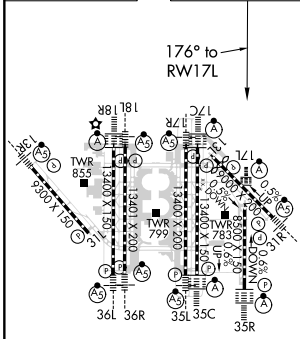
## RADAR REQUIRED



SC-2, 07 OCT 2021 to 04 NOV 2021

SC-2, 07 OCT 2021 to 04 NOV 2021

ELEV <b>607</b>	<b>D</b>	TDZE <b>545</b>
-----------------	----------	-----------------



HIRL all Rwys  
REIL Rws 13L and 31L  
TDZ/CL all Rws except 13L and 31L

1020	3000	TACKE	VGSi and RNAV glidepath not coincident (VGSi Angle 3.00/TCH 77).	
*LNAV only.		GBUSH	DRAAK	RIVET
*2 NM to RWY 17L		2300	3000	5000
RWY 17L		2300	3000	5000
-2 NM		-3.4 NM	-3.1 NM	-6.3 NM
-3.2 NM		GP 3.00° TCH 56		
CATEGORY	A	B	C	D
LPV DA		745/18	200 (200-½)	
LNAV/VNAV DA		1063/60	518 (500-1½)	
LNAV MDA	1240/24	695 (700-½)	1240-1½	695 (700-1½)