

| | | |
|--|------------------------|--|
| WAAS CH 86807 W18A | APP CRS 176° | Rwy Idg 13401 TDZE 602 Apt Elev 606 |
|--|------------------------|--|

RNAV (GPS) RWY 18L

DALLAS-FORT WORTH INTL (DFW)

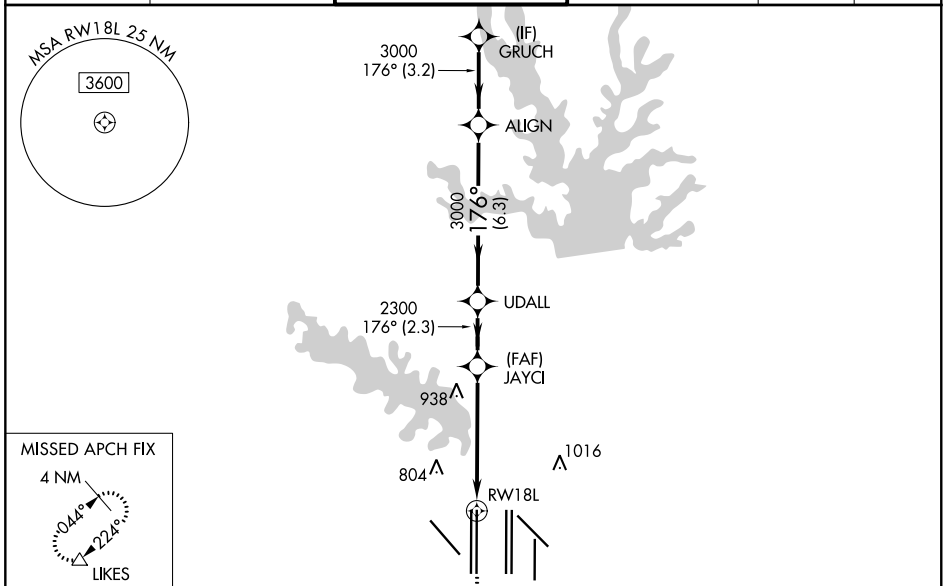
RADAR required for procedure entry. RNP APCH.

Simultaneous approach authorized with Rwy 17L/C/R. For uncompensated Baro-VNAV systems, LNAV/VNAV NA below -4°C or above 54°C. LNAV procedure NA during simultaneous operations. Use of FD or AP providing RNAV track guidance required during simultaneous operations. For inop ALS, increase LNAV/VNAV all Cats visibility to RVR 6000 and LNAV Cats C and D visibility to 1 3/4 SM.

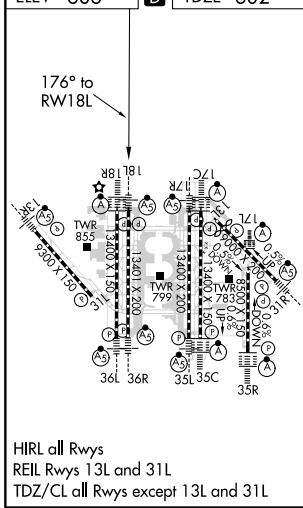


MISSED APPROACH: Climb to 1100, then climbing right turn to 3000 direct LIKES and hold.

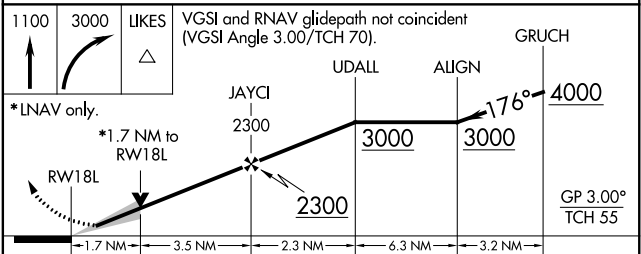
| | | | | | |
|--|------------------------------------|---|---|---------------------------|-------|
| D-ATIS ARR 123.775 DEP 135.925 | REGIONAL APP CON 118.425 | DFW TOWER 126.55 127.5 EAST 124.15 134.9 WEST | GND CON 121.65 121.8 EAST 121.85 WEST | CLNC DEL 128.25 | CPDLC |
|--|------------------------------------|---|---|---------------------------|-------|



| | | |
|-----------------|----------|-----------------|
| ELEV 606 | D | TDZE 602 |
|-----------------|----------|-----------------|



HIRL all Rwys
REIL Rwy 13L and 31L
TDZ/CL all Rwys except 13L and 31L



| CATEGORY | A | B | C | D |
|--------------|---------|---------------|---------------|----------------|
| LPV DA | | 802/18 | 200 (200-1/2) | |
| LNAV/VNAV DA | | 1013/40 | 411 (500-3/4) | |
| LNAV MDA | 1220/24 | 618 (700-1/2) | 1220-13/8 | 618 (700-13/8) |

SC-2, 07 OCT 2021 to 04 NOV 2021

SC-2, 07 OCT 2021 to 04 NOV 2021