

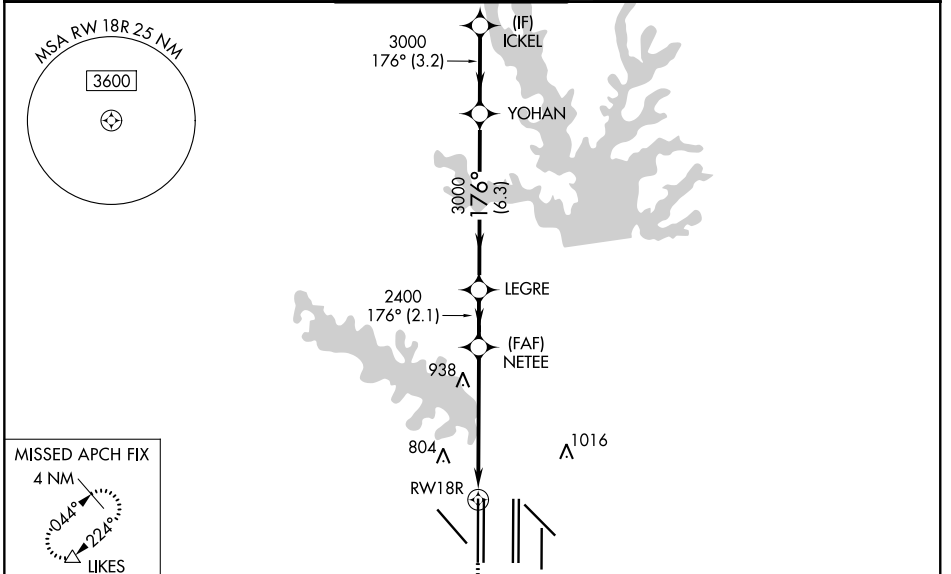
WAAS CH 99407 W18B	APP CRS 176°	Rwy Idg 13400 TDZE 606 Apt Elev 606
--	------------------------	--

RNAV (GPS) RWY 18R

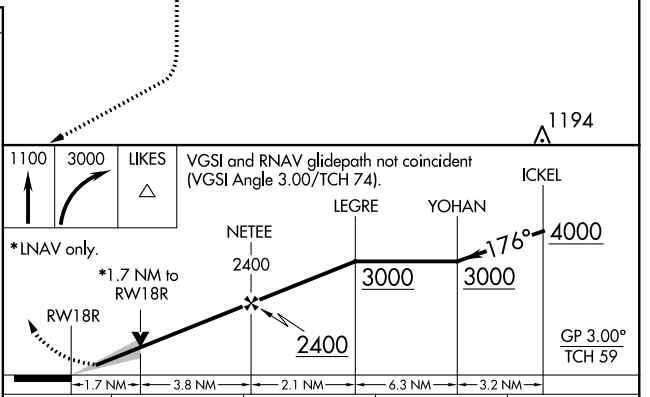
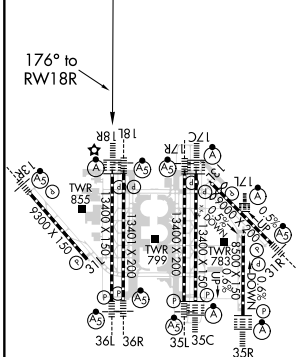
DALLAS-FORT WORTH INTL (DFW)

RADAR required for procedure entry. RNP APCH.		ALSF-2 	MISSED APPROACH: Climb to 1100 then climbing right turn to 3000 direct LIKES and hold.
⚠ Simultaneous approach authorized with Rwy 17L/C/R. For uncompensated Baro-VNAV systems, LNAV/VNAV NA below -4°C or above 54°C. LNAV procedure NA during simultaneous operations. Use of FD or AP providing RNAV track guidance required during simultaneous operations. For inop ALS, increase LNAV/VNAV all Cats visibility to RVR 6000 and LNAV Cats C and D visibility to 1¼ SM.			

D-ATIS ARR 123.775 DEP 135.925	REGIONAL APP CON 118.425	DFW TOWER 126.55 EAST 127.5 EAST 124.15 WEST 134.9 WEST	GND CON 121.65 EAST 121.8 EAST 121.85 WEST	CLNC DEL 128.25	CPDLC
--	------------------------------------	---	--	---------------------------	-------



ELEV 606	D	TDZE 606
----------	----------	----------



CATEGORY	A	B	C	D
LPV DA	806/18		200 (200-½)	
LNAV/VNAV DA	1012/40		406 (500-¾)	
LNAV MDA	1220/24 614 (700-½)		1220-1⅓ 614 (700-1⅓)	

HIRL all Rwys
REIL Rwys 13L and 31L
TDZ/CL all Rwys except 13L and 31L

SC-2, 07 OCT 2021 to 04 NOV 2021

SC-2, 07 OCT 2021 to 04 NOV 2021