


WAAS CH 93805 W36B	APP CRS 356°	Rwy Idg 13400 TDZE 588 Apt Elev 607
--	------------------------	--

RNAV (GPS) RWY 36L

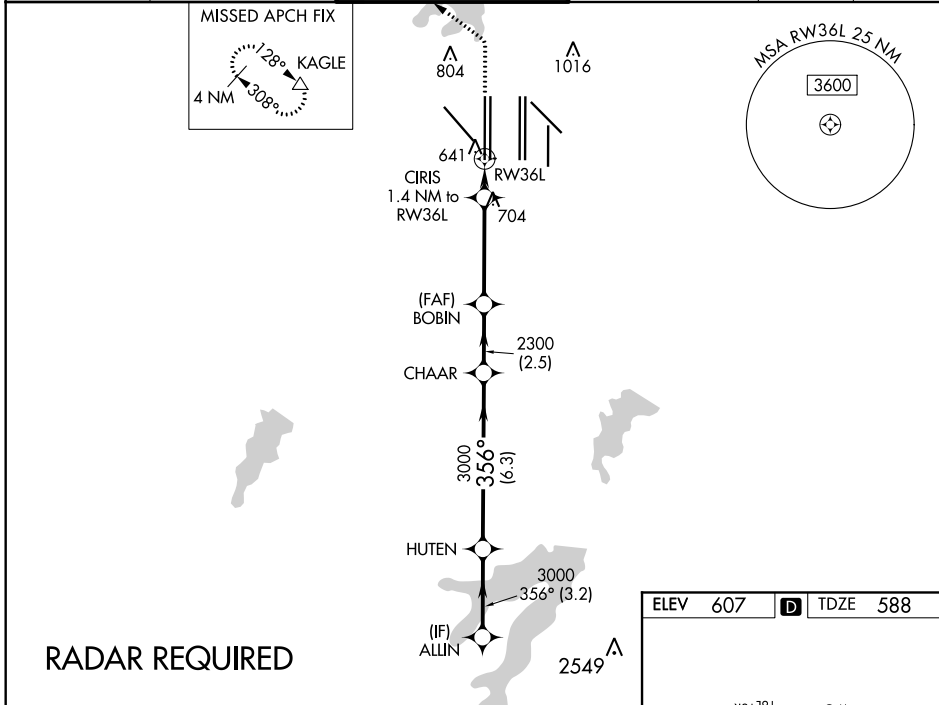
DALLAS-FORT WORTH INTL (DFW)

▼ For uncompensated Baro-VNAV systems, LNAV/VNAV NA below -4°C (25°F) or above 54°C (130°F). For inop MALSR, increase LNAV Cat C/D visibility to RVR 5500. Simultaneous approach authorized with Rwy 35L/C/R. DME/DME RNP-0.3 NA. LNAV procedure NA during simultaneous operations. Use of FD or AP providing RNAV track guidance required during simultaneous operations.

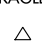
MALSR 

MISSED APPROACH: Climb to 1100 then climbing left turn to 3000 direct KAGLE and hold.

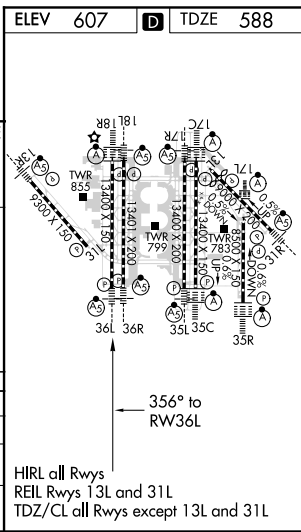
D-ATIS ARR 123.775 DEP 135.925	REGIONAL APP CON 118.425	DFW TOWER 126.55 127.5 EAST 124.15 134.9 WEST	GND CON 121.65 121.8 EAST 121.85 WEST	CLNC DEL 128.25	CPDLC
--	------------------------------------	---	---	---------------------------	-------



VGSI and RNAV glidepath not coincident (VGSI Angle 3.00/TCH 72).

ALLIN	HUTEN	CHAAR	BOBIN	CIRIS	RW36L
4000	3000	3000	2300	1100	3000
GP 3.00° TCH 55	3.2 NM	6.3 NM	2.5 NM	3.8 NM	1.4 NM
*LNAV only.					
KAGLE 					
*1080					

CATEGORY	A	B	C	D
LPV DA	788/18		200 (200-1/2)	
LNAV/VNAV DA	987/45		399 (400-2/3)	
LNAV MDA	960/24	372 (400-1/2)	960/35	372 (400-2/3)



SC-2, 07 OCT 2021 to 04 NOV 2021

SC-2, 07 OCT 2021 to 04 NOV 2021