

APP CRS <b>315°</b>	Rwy Idg <b>9300</b>
	TDZE <b>581</b>
	Apt Elev <b>607</b>

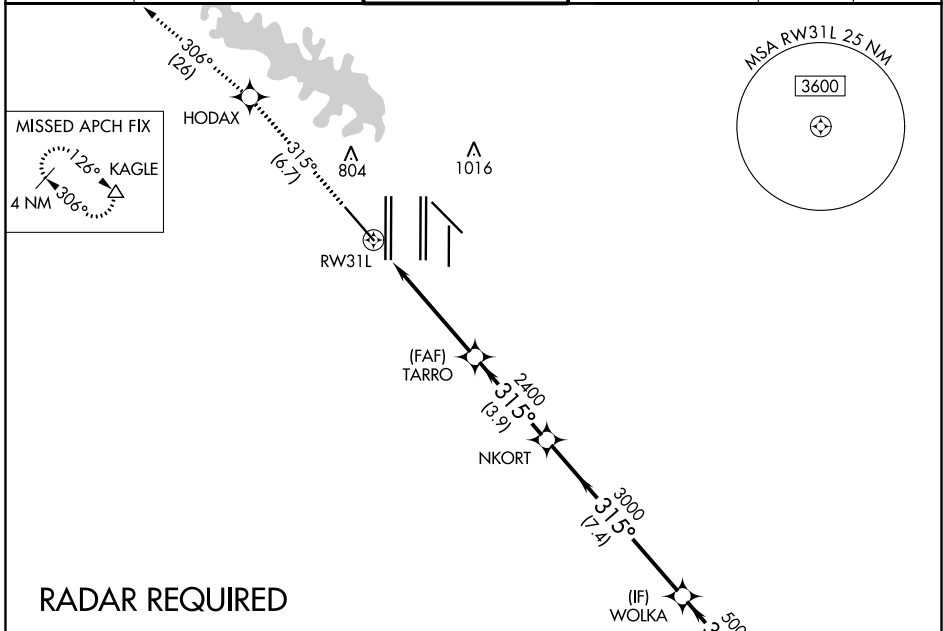
# RNAV (RNP) Z RWY 31L

DALLAS-FORT WORTH INTL (DFW)

**▽** For uncompensated Baro-VNAV systems, procedure NA below -4°C (25°F) or above 54°C (130°F). Simultaneous approach authorized with Rwy 31R. GPS Required. Use of FD or AP providing RNAV track guidance required during simultaneous operations.

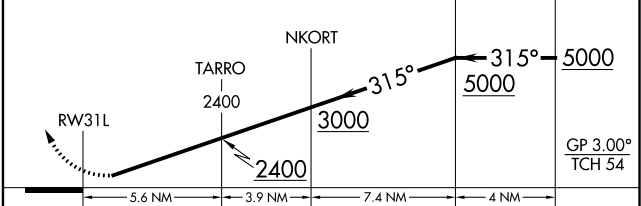
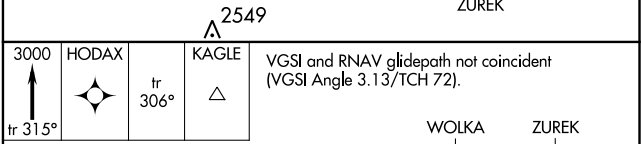
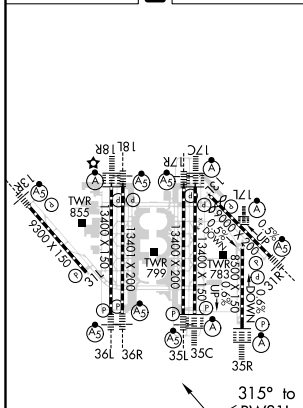
**MISSED APPROACH:** Climb to 3000 on track 315° to HODAX and on track 306° to KAGLE and hold.

D-ATIS ARR <b>123.775</b> DEP <b>135.925</b>	REGIONAL APP CON <b>118.425 127.075 119.4</b>	DFW TOWER <b>126.55 127.5 EAST</b> <b>124.15 134.9 WEST</b>	GND CON <b>121.65 121.8 EAST</b> <b>121.85 WEST</b>	CLNC DEL <b>128.25</b>	CPDLC
--	--	---	---	---------------------------	-------



**RADAR REQUIRED**

ELEV <b>607</b>	<b>D</b>	TDZE <b>581</b>
-----------------	----------	-----------------



CATEGORY	A	B	C	D
RNP 0.30 DA	951/60    370 (400-1/4)			

**AUTHORIZATION REQUIRED**