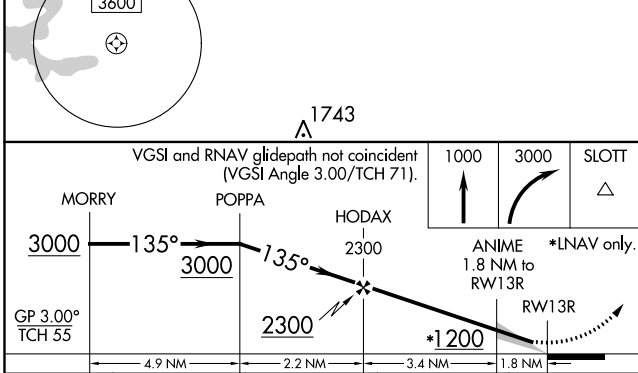
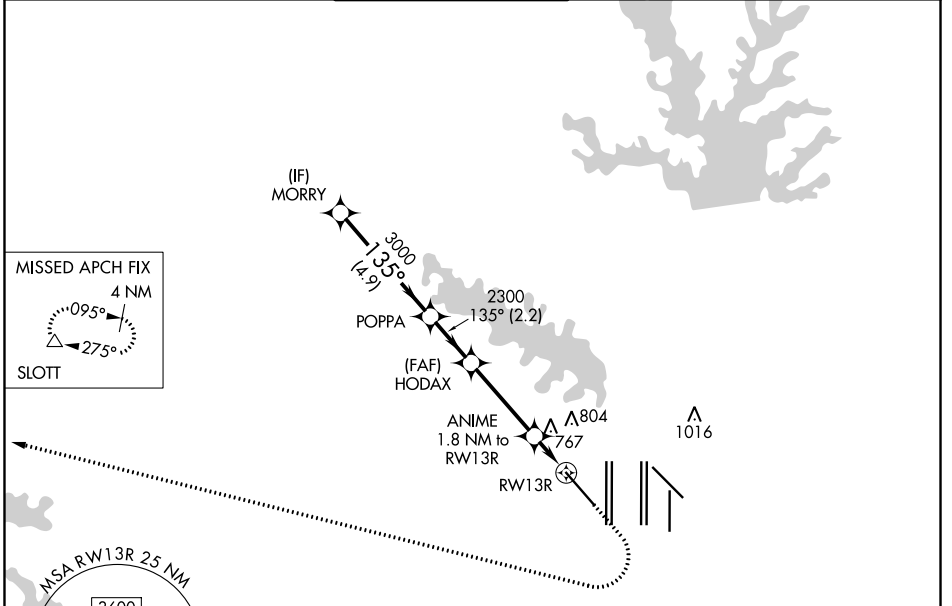


|  |                        |   |
|--|------------------------|---|
| WAAS<br>CH <b>72742</b><br><b>W13A</b> | APP CRS<br><b>135°</b> | Rwy Idg <b>9300</b><br>TDZE <b>591</b><br>Apt Elev <b>607</b> |
|--|------------------------|---|

# RNAV (GPS) Y RWY 13R

DALLAS-FORT WORTH INTL (DFW)

|   |   |   |  |                           |       |
|---|---|---|--|---------------------------|-------|
| RNP APCH.<br>▼ For uncompensated Baro-VNAV systems, LNAV/VNAV NA below -6° C or above 54° C. For inop ALS, increase LNAV/VNAV all Cats visibility to RVR 5500 and LNAV Cat C/D visibility to 1½ SM. |   | MALSR<br>   | MISSED APPROACH: Climb to 1000 then climbing right turn to 3000 direct SLOTT and hold. |                           |       |
| D-ATIS<br>ARR <b>123.775</b><br>DEP <b>135.925</b>  | REGIONAL APP CON<br><b>133.15 118.1</b> | DFW TOWER<br><b>126.55 127.5 EAST</b><br><b>124.15 134.9 WEST</b> | GND CON<br><b>121.65 121.8 EAST</b><br><b>121.85 WEST</b>                              | CLNC DEL<br><b>128.25</b> | CPDLC |



|          |                   |
|----------|-------------------|
| ELEV 607 | <b>D</b> TDZE 591 |
|----------|-------------------|

HIRL all Rwws  
REIL Rwws 13L and 31L  
TDZ/CL all Rwws except 13L and 31L

SC-2, 07 OCT 2021 to 04 NOV 2021

SC-2, 07 OCT 2021 to 04 NOV 2021