

WAAS CH 99703 W31A	APP CRS 315°	Rwy Idg 9300 TDZE 581 Apt Elev 607
--	------------------------	---

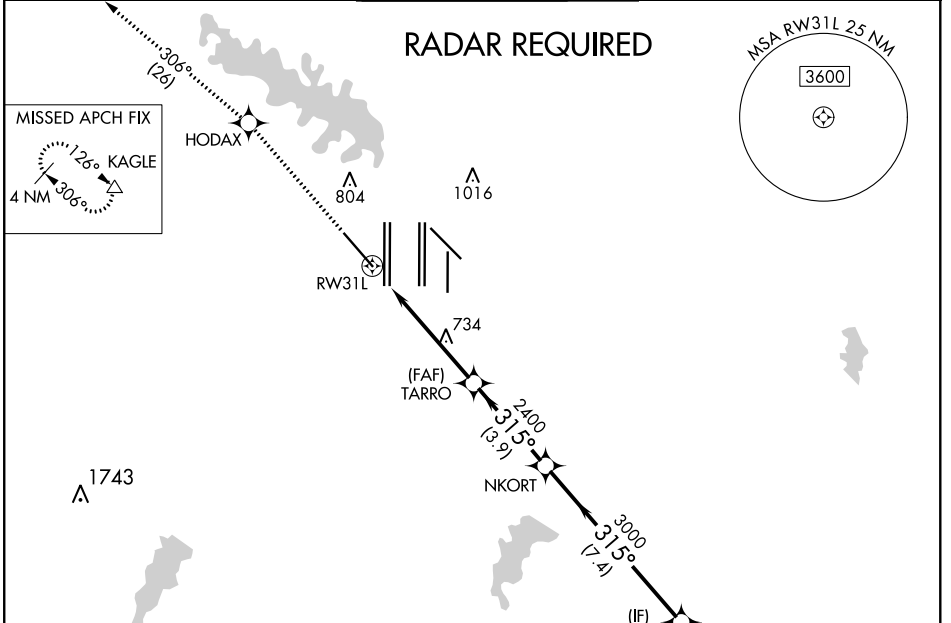
RNAV (GPS) Y RWY 31L

DALLAS-FORT WORTH INTL (DFW)

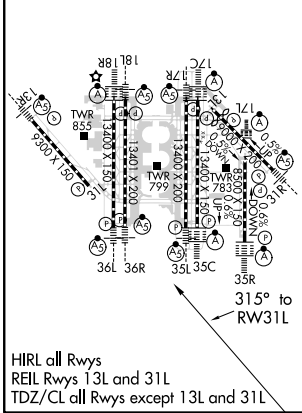
▼ For uncompensated Baro-VNAV systems, LNAV/VNAV NA below -4°C (25°F) or above 54°C (130°F). Simultaneous approach authorized with Rwy 31R. DME/DME RNP-0.3 NA. LNAV procedure NA during simultaneous operations. Use of FD or AP providing RNAV track guidance required during simultaneous operations.

MISSED APPROACH: Climb to 3000 direct HODAX and on track 306° to KAGLE and hold.

D-ATIS ARR 123.775 DEP 135.925	REGIONAL APP CON 118.425 127.075 119.4	DFW TOWER 126.55 127.5 EAST 124.15 134.9 WEST	GND CON 121.65 121.8 EAST 121.85 WEST	CLNC DEL 128.25	CPDLC
--	--	---	---	---------------------------	-------



ELEV 607	D	TDZE 581
-----------------	----------	-----------------



3000	HODAX	tr 306°	KAGLE	VGSI and RNAV glidepath not coincident (VGSI Angle 3.13/TCH 72).
*LNAV only.		RWY 31L		WOLKA ZUREK
*1.2 NM to RWY 31L		TARRO 2400	NKORT	315° 5000
RWY 31L		2400	3000	GP 3.00° TCH 54
1.2	4.4 NM	3.9 NM	7.4 NM	4 NM
CATEGORY	A	B	C	D
LPV DA		831/40	250 (300-¾)	
LNAV/VNAV DA		907/50	326 (400-1)	
LNAV MDA	1060/55	479 (500-1)	1060-1⅓	479 (500-1⅓)

SC-2, 07 OCT 2021 to 04 NOV 2021

SC-2, 07 OCT 2021 to 04 NOV 2021