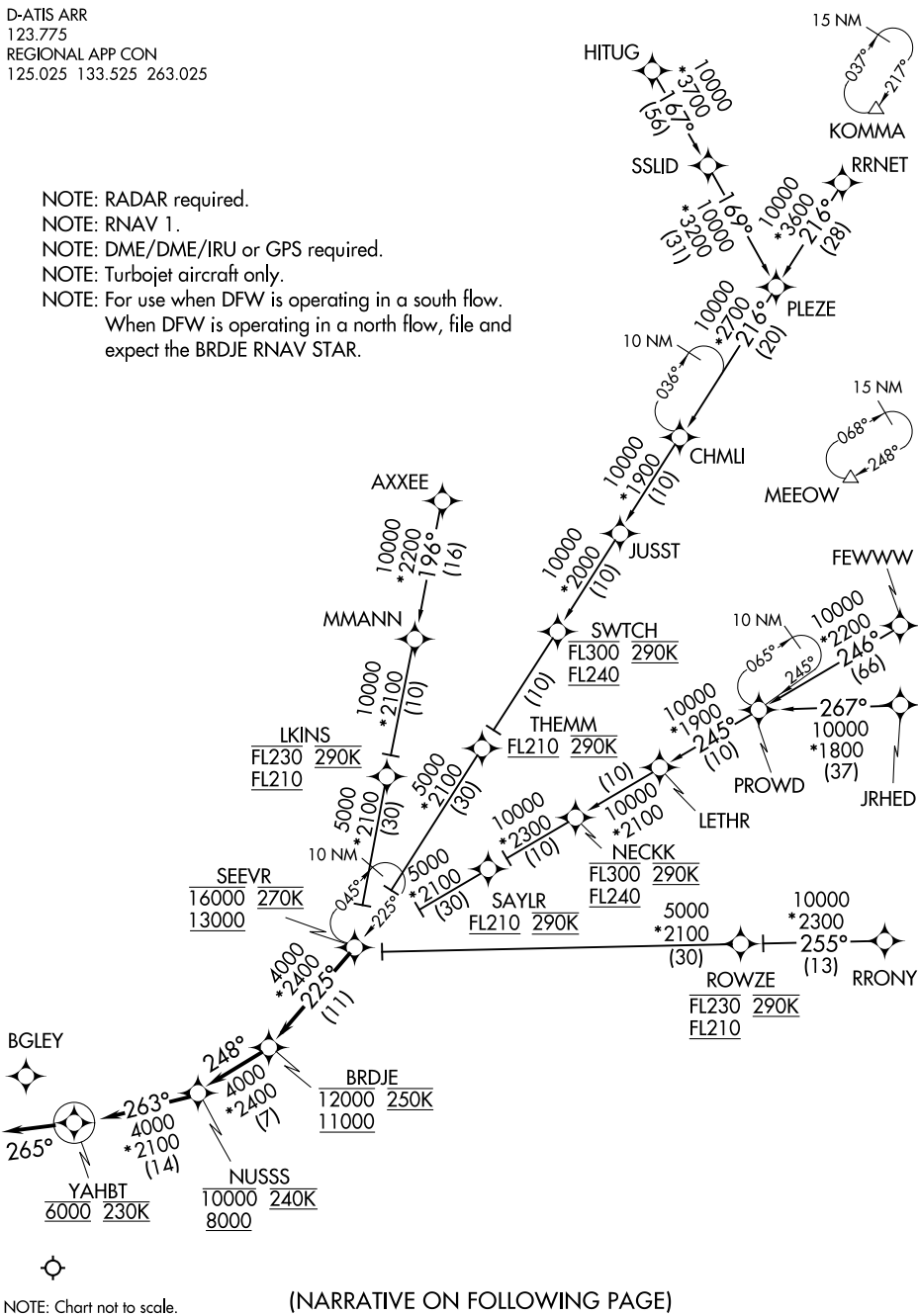


SEEVR FOUR ARRIVAL (RNAV)

D-ATIS ARR
123.775
REGIONAL APP CON
125.025 133.525 263.025

- NOTE: RADAR required.
- NOTE: RNAV 1.
- NOTE: DME/DME/IRU or GPS required.
- NOTE: Turbojet aircraft only.
- NOTE: For use when DFW is operating in a south flow.
When DFW is operating in a north flow, file and expect the BRDJE RNAV STAR.



SC-2, 07 OCT 2021 to 04 NOV 2021

SC-2, 07 OCT 2021 to 04 NOV 2021

NOTE: Chart not to scale.

(NARRATIVE ON FOLLOWING PAGE)

SEEVR FOUR ARRIVAL (RNAV)

(SEEVR.SEEVR4) 05JAN17

DALLAS-FORT WORTH, TEXAS
DALLAS-FORT WORTH INTL (DFW)

SEEVR FOUR ARRIVAL (RNAV)

ARRIVAL ROUTE DESCRIPTION

AXXEE TRANSITION (AXXEE.SEEVR4): (For aircraft filing FL230 and below only)

CHMLI TRANSITION (CHMLI.SEEVR4): (ATC assigned only)

FEWWW TRANSITION (FEWWW.SEEVR4)

HITUG TRANSITION (HITUG.SEEVR4)

JRHED TRANSITION (JRHED.SEEVR4): (ATC assigned only)

PROWD TRANSITION (PROWD.SEEVR4): (ATC assigned only)

RRNET TRANSITION (RRNET.SEEVR4)

RRONY TRANSITION (RRONY.SEEVR4): (For aircraft filing FL230 and below only)

From SEEVR on track 225° to cross BRDJE between 11000 and 12000 and at 250K, then on track 248° to cross NUSSS between 8000 and 10000 and at 240K, then on track 263° to cross YAHBT at 6000 and at 230K, then on track 265°. Expect RADAR vectors to final approach course.

SC-2, 07 OCT 2021 to 04 NOV 2021

SC-2, 07 OCT 2021 to 04 NOV 2021