

See following page for Arrival Route.

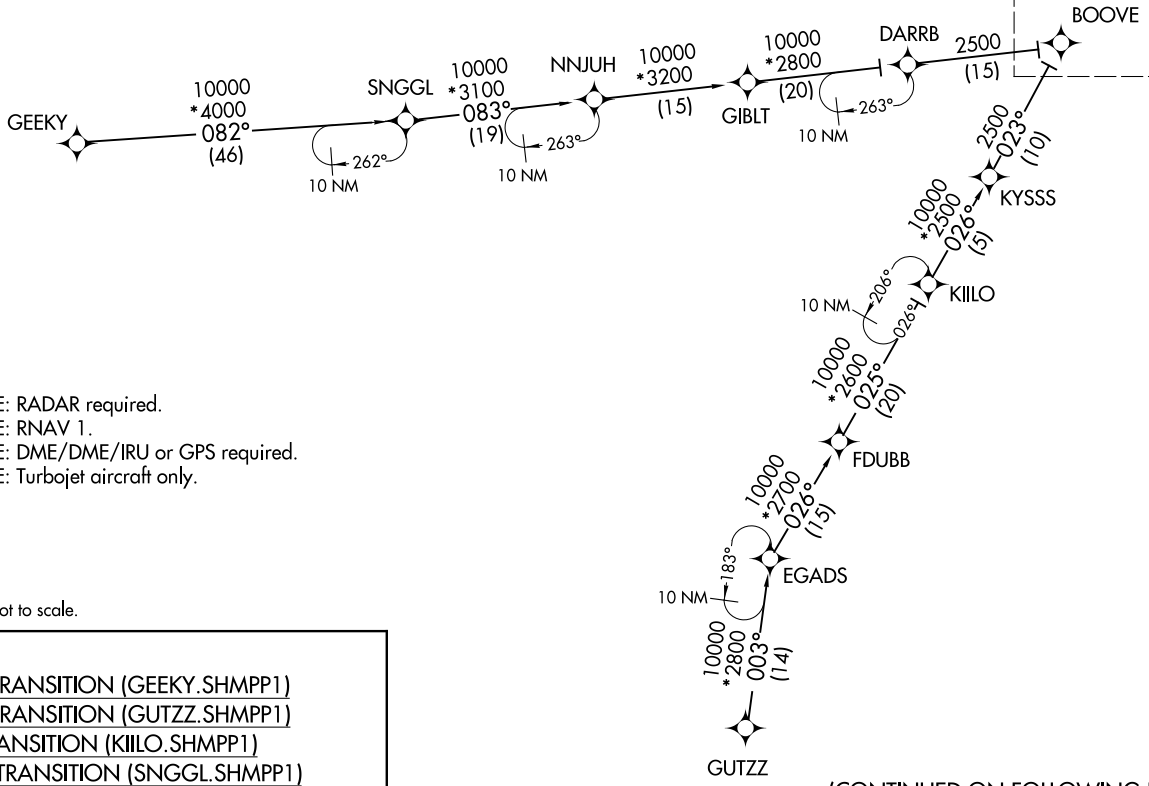
(BOOVE.SHMPP1) 20086

AL-6039 (FAA)

DALLAS-FORT WORTH INTL (DFW)
DALLAS-FORT WORTH, TEXAS



D-ATIS ARR
123.775
REGIONAL APP CON
119.875 284.65



NOTE: RADAR required.
NOTE: RNAV 1.
NOTE: DME/DME/IRU or GPS required.
NOTE: Turbojet aircraft only.

NOTE: Chart not to scale.

- GEEKY TRANSITION (GEEKY.SHMPP1)
- GUTZZ TRANSITION (GUTZZ.SHMPP1)
- KIILO TRANSITION (KIILO.SHMPP1)
- SNGGL TRANSITION (SNGGL.SHMPP1)

(CONTINUED ON FOLLOWING PAGE)
(NARRATIVE ON FOLLOWING PAGE)

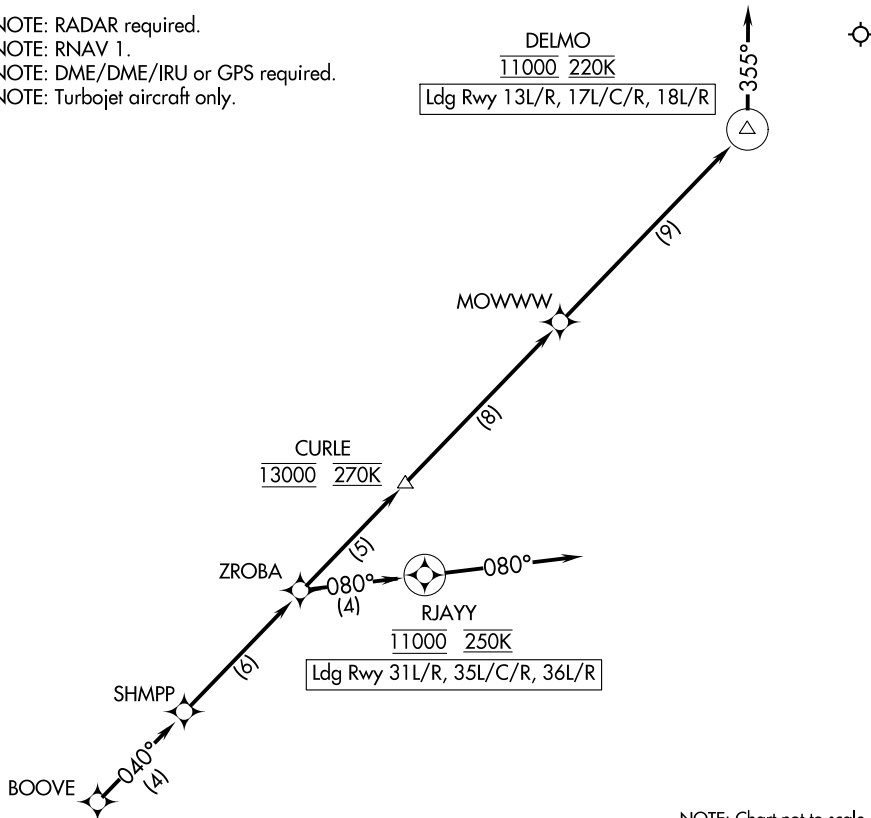
SHMPP ONE ARRIVAL (RNAV) Transition Routes
(BOOVE.SHMPP1) 26MAR20

DALLAS-FORT WORTH, TEXAS
DALLAS-FORT WORTH INTL (DFW)

SHMPP ONE ARRIVAL (RNAV) Arrival Route

D-ATIS ARR
123.775
REGIONAL APP CON
119.875 284.65

NOTE: RADAR required.
NOTE: RNAV 1.
NOTE: DME/DME/IRU or GPS required.
NOTE: Turbojet aircraft only.



NOTE: Chart not to scale.

ARRIVAL ROUTE DESCRIPTION

From BOOVE on track 040° to SHMPP, then on track 040° to ZROBA.

Landing RUNWAYS 13L/R, 17L/C/R, 18L/R: From ZROBA on track 040° to cross CURLE at 13000 and at 270K, then on track 040° to MOWWW, then on track 040° to cross DELMO at 11000 and 220K, then on track 355°. Expect RADAR vectors to final approach course.

Landing Runways 35L/C/R, 36L/R, 31L/R: From ZROBA on track 080° to cross RJAYY at 11000 and at 250K, then on track 080°. Expect RADAR vectors to final approach course.