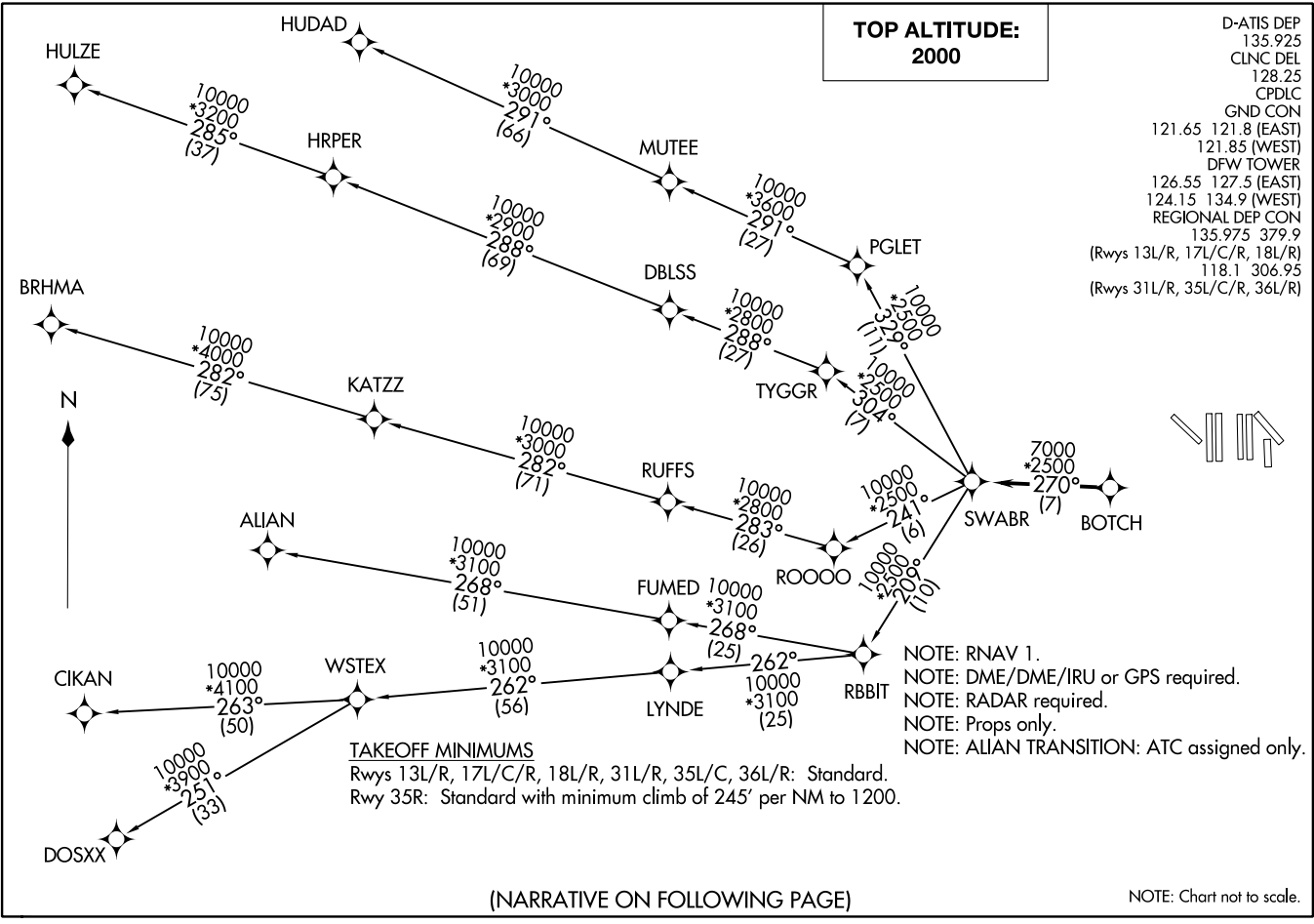


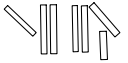
SWABR EIGHT DEPARTURE (RNAV)  
(SWABR8; SWABR) 17JUN21

DALLAS-FORT WORTH, TEXAS  
DALLAS-FORT WORTH INTL (DFW)



**TOP ALTITUDE:  
2000**

D-ATIS DEP 135.925  
 CLNC DEL 128.25  
 CPDLC  
 GND CON 121.65 121.8 (EAST)  
 121.85 (WEST)  
 DFW TOWER 126.55 127.5 (EAST)  
 124.15 134.9 (WEST)  
 REGIONAL DEP CON 135.975 379.9  
 (Rwys 13L/R, 17L/C/R, 18L/R)  
 118.1 306.95  
 (Rwys 31L/R, 35L/C/R, 36L/R)



NOTE: RNAV 1.  
 NOTE: DME/DME/IRU or GPS required.  
 NOTE: RADAR required.  
 NOTE: Props only.  
 NOTE: ALIAN TRANSITION: ATC assigned only.

**TAKEOFF MINIMUMS**  
 Rwys 13L/R, 17L/C/R, 18L/R, 31L/R, 35L/C, 36L/R: Standard.  
 Rwy 35R: Standard with minimum climb of 245° per NM to 1200.

(NARRATIVE ON FOLLOWING PAGE)

NOTE: Chart not to scale.

(SWABR8; SWABR) 21168  
SWABR EIGHT DEPARTURE (RNAV)

AL-6039 (FAA)  
DALLAS-FORT WORTH INTL (DFW)  
DALLAS-FORT WORTH, TEXAS

# SWABR EIGHT DEPARTURE (RNAV)



## DEPARTURE ROUTE DESCRIPTION

TAKEOFF RUNWAYS 13L/R, 17L/C/R, 18L/R, 31L/R, 35L/C/R, 36L/R: Climb on assigned heading for RADAR vectors to BOTCH. Then on track 270° to SWABR, then on (transition). Maintain 2000. Expect filed altitude 10 minutes after departure.

ALIAN TRANSITION (SWABR8.ALIAN)

BRHMA TRANSITION (SWABR8.BRHMA)

CIKAN TRANSITION (SWABR8.CIKAN)

DOSXX TRANSITION (SWABR8.DOSXX)

HUDAD TRANSITION (SWABR8.HUDAD)

HULZE TRANSITION (SWABR8.HULZE)

WSTEX TRANSITION (SWABR8.WSTEX)

SC-2, 07 OCT 2021 to 04 NOV 2021

SC-2, 07 OCT 2021 to 04 NOV 2021