

TEXOMA ONE DEPARTURE

D-ATIS DEP 135.925
 CLNC DEL 128.25
 CPDLC
 GND CON 121.65 121.8 (EAST) 121.85 (WEST)
 DFW TOWER 126.55 127.5 (EAST) 124.15 134.9 (WEST)
 REGIONAL DEP CON
 118.55 290.35 (Rwy 17C/R)
 126.475 363.15 (Rwy 18L/R)
 125.125 353.95 (Rwy 36L/R)
 125.125 353.95 (Rwy 35L/C)

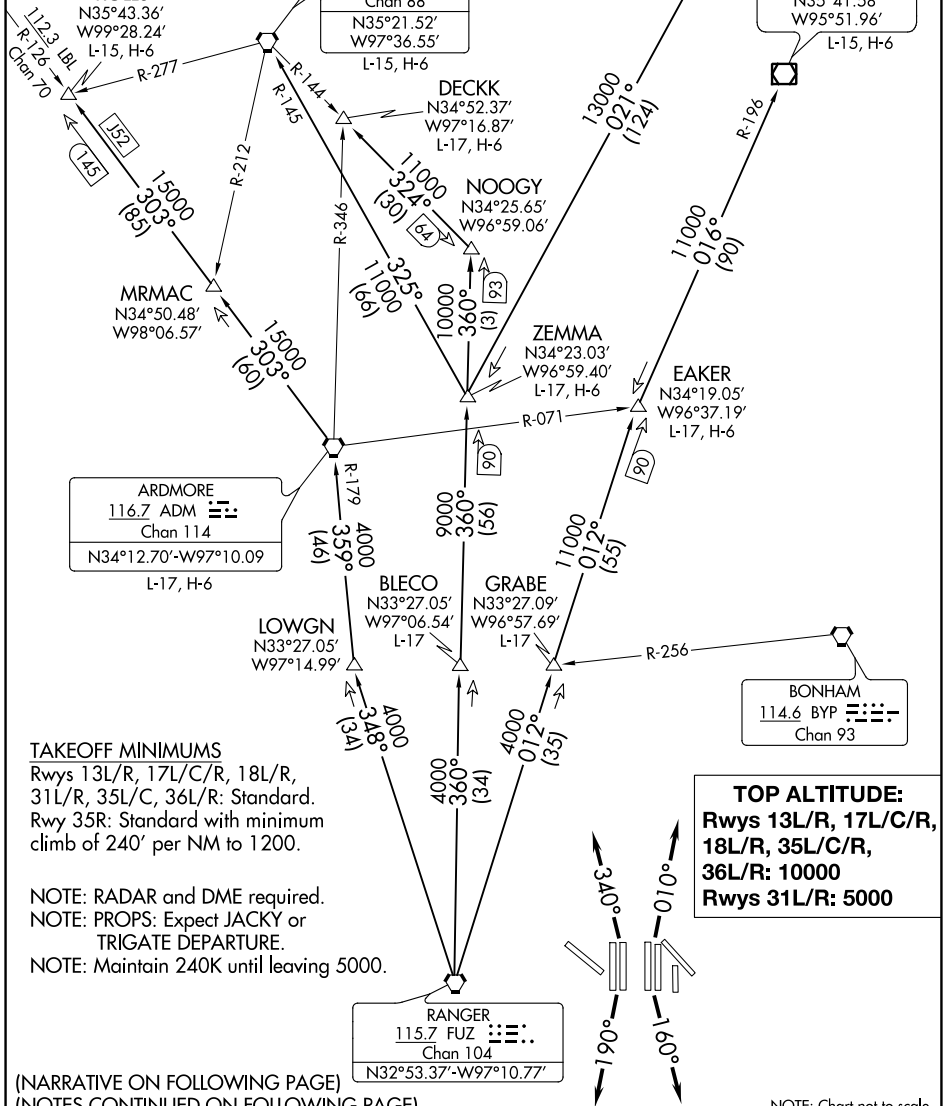
ROLLS

N35°43.36'
 W99°28.24'
 L-15, H-6

WILL ROGERS
 114.1 IRW
 Chan 88
 N35°21.52'
 W97°36.55'
 L-15, H-6

TULSA
 114.4 TUL
 Chan 91
 N36°11.78'
 W95°47.29'
 L-15, H-6

OKMULGEE
 114.9 OKM
 Chan 96
 N35°41.58'
 W95°51.96'
 L-15, H-6



ARDMORE
 116.7 ADM
 Chan 114
 N34°12.70'-W97°10.09'
 L-17, H-6

DECK
 N34°52.37'
 W97°16.87'
 L-17, H-6

NOOGY
 N34°25.65'
 W96°59.06'

ZEMMA
 N34°23.03'
 W96°59.40'
 L-17, H-6

EAKER
 N34°19.05'
 W96°37.19'
 L-17, H-6

BLECO
 N33°27.05'
 W97°06.54'
 L-17

GRABE
 N33°27.09'
 W96°57.69'
 L-17

LOWGN
 N33°27.05'
 W97°14.99'

BONHAM
 114.6 BYP
 Chan 93

RANGER
 115.7 FUZ
 Chan 104
 N32°53.37'-W97°10.77'

TOP ALTITUDE:
 Rwys 13L/R, 17L/C/R,
 18L/R, 35L/C/R,
 36L/R: 10000
 Rwys 31L/R: 5000

TAKEOFF MINIMUMS
 Rwys 13L/R, 17L/C/R, 18L/R,
 31L/R, 35L/C, 36L/R: Standard.
 Rwy 35R: Standard with minimum
 climb of 240' per NM to 1200.

NOTE: RADAR and DME required.
 NOTE: PROPS: Expect JACKY or
 TRIGATE DEPARTURE.
 NOTE: Maintain 240K until leaving 5000.

(NARRATIVE ON FOLLOWING PAGE)
 (NOTES CONTINUED ON FOLLOWING PAGE)

NOTE: Chart not to scale.

TEXOMA ONE DEPARTURE

SC-2, 07 OCT 2021 to 04 NOV 2021

SC-2, 07 OCT 2021 to 04 NOV 2021

TEXOMA ONE DEPARTURE



DEPARTURE ROUTE DESCRIPTION

TAKEOFF RUNWAYS 31L/R: Climb on assigned heading, maintain 5000 thence. . . .

TAKEOFF RUNWAYS 13L/R, 17L, 35R: Climb on assigned heading, maintain 10000, thence. . . .

TAKEOFF RUNWAYS 17C/R: Climb on heading 160°, maintain 10000, thence. . . .

TAKEOFF RUNWAYS 18L/R: Climb on heading 190°, maintain 10000, thence. . . .

TAKEOFF RUNWAYS 35L/C: Climb on heading 010°, maintain 10000, thence. . . .

TAKEOFF RUNWAYS 36L/R: Climb on heading 340°, maintain 10000, thence. . . .

. . . .on vectors to appropriate route, unless otherwise advised maintain assigned altitude and expect filed altitude 10 minutes after departure.

ARDMORE TRANSITION (TEX1.ADM): From over FUZ VORTAC on FUZ R-348 to LOWGN, then on ADM R-179 to ADM VORTAC.

BLECO TRANSITION (TEX1.BLECO): From over FUZ VORTAC on FUZ R-360 to BLECO.

DECKK TRANSITION (TEX1.DECKK): From over FUZ VORTAC on FUZ R-360 to NOOGY, then on IRW R-144 to DECKK.

EAKER TRANSITION (TEX1.EAKER): From over FUZ VORTAC on FUZ R-012 to EAKER.

GRABE TRANSITION (TEX1.GRABE): From over FUZ VORTAC on FUZ R-012 to GRABE.

OKMULGEE TRANSITION (TEX1.OKM): From over FUZ VORTAC on FUZ R-012 to EAKER, then on OKM R-196 to OKM VOR/DME.

ROLLS TRANSITION (TEX1.ROLLS): From over FUZ VORTAC on FUZ R-348 to LOWGN, then on ADM R-179 to ADM VORTAC, then on ADM R-303 to ROLLS.

TULSA TRANSITION (TEX1.TUL): From over FUZ VORTAC on FUZ R-360 to ZEMMA, then on TUL R-201 to TUL VORTAC.

WILL ROGERS TRANSITION (TEX1.IRW): From over FUZ VORTAC on FUZ R-360 to ZEMMA, then on IRW R-145 to IRW VORTAC.

ZEMMA TRANSITION (TEX1.ZEMMA): From over FUZ VORTAC on FUZ R-360 to ZEMMA.

NOTE: BLECO TRANSITION: ATC assigned.

NOTE: DECKK TRANSITION: For all aircraft inbound to the Oklahoma City area.

NOTE: EAKER TRANSITION: For aircraft inbound to the Tulsa Terminal area.

NOTE: GRABE TRANSITION: ATC assigned.

NOTE: OKMULGEE TRANSITION: For all aircraft overflying OKM VOR/DME proceeding on J181 to BDF to destinations in the Chicago Terminal area and north.

NOTE: ROLLS TRANSITION: For all aircraft proceeding northwest bound on J52.

NOTE: TULSA TRANSITION: For all aircraft overflying TUL VORTAC.

NOTE: WILL ROGERS TRANSITION: For all aircraft overflying IRW VORTAC.

SC-2, 07 OCT 2021 to 04 NOV 2021

SC-2, 07 OCT 2021 to 04 NOV 2021