

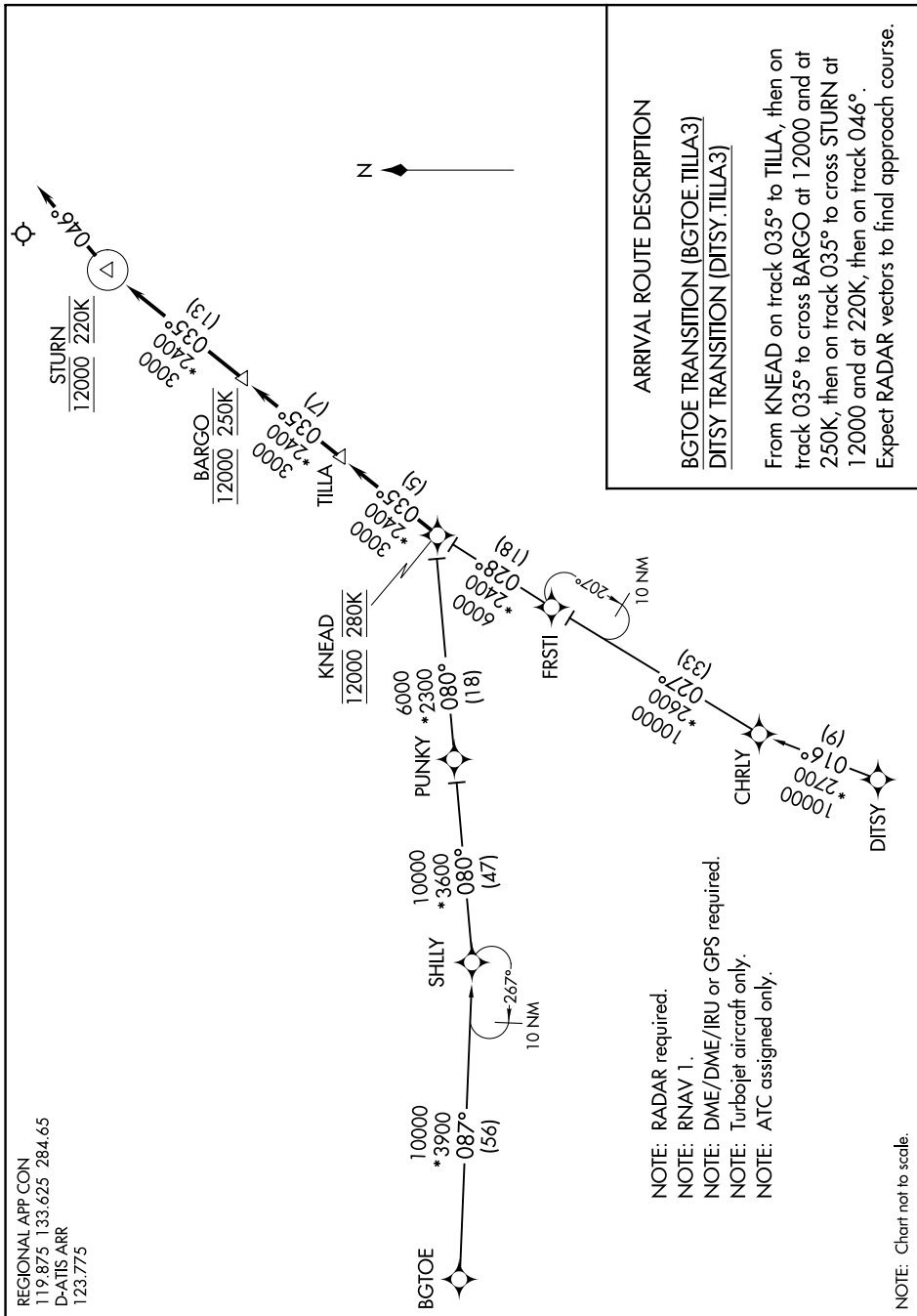
# TILLA THREE ARRIVAL (RNAV)

SC-2, 07 OCT 2021 to 04 NOV 2021

REGIONAL APP CON  
119.875 133.625 284.65  
D-ATIS ARR  
123.775

# TILLA THREE ARRIVAL (RNAV)

(KNEAD.TILLA3) 31MAR16



**ARRIVAL ROUTE DESCRIPTION**

**BGTOE TRANSITION (BGTOE.TILLA3)**

**DITSY TRANSITION (DITSY.TILLA3)**

From KNEAD on track 035° to TILLA, then on track 035° to cross BARGO at 12000 and at 250K, then on track 035° to cross STURN at 12000 and at 220K, then on track 046°.

Expect RADAR vectors to final approach course.

- NOTE: RADAR required.
- NOTE: RNAV 1.
- NOTE: DME/DME/IRU or GPS required.
- NOTE: Turbojet aircraft only.
- NOTE: ATC assigned only.

NOTE: Chart not to scale.

SC-2, 07 OCT 2021 to 04 NOV 2021