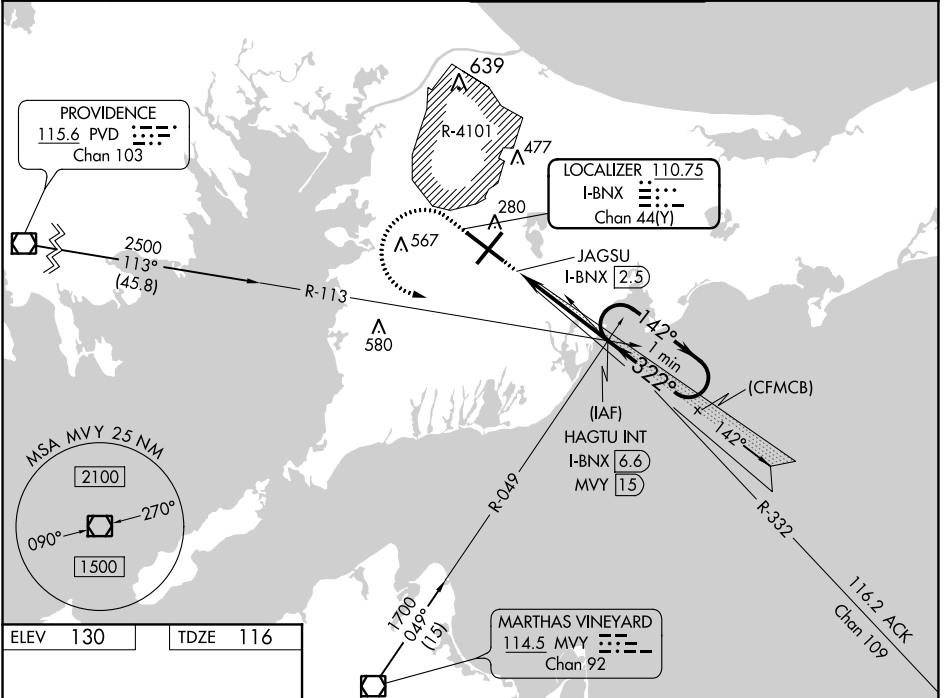


LOC/DME I-BNX 110.75 Chan 44(Y)	APP CRS 322°	Rwy Idg 9501 TDZE 116 Apt Elev 130
--	------------------------	---

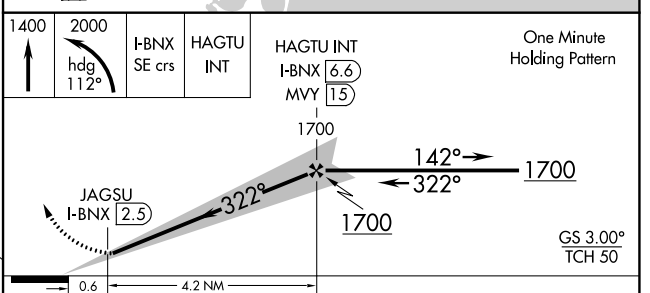
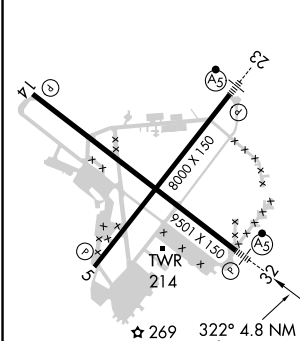
ILS or LOC RWY 32

CAPE COD COAST GUARD AIR STATION (F'MH)

Circling NA northeast of Rwy 14 and northwest of Rwy 23. *RVR 1800 authorized with use of FD or AP or HUD to DA.		MALSRL 	MISSED APPROACH: Climb to 1400 then climbing left turn to 2000 on heading 112° and I-BNX localizer SE course to HAGTU INT/I-BNX 6.6 DME and hold.
ATIS 120.475 236.825	BOSTON APP CON * 118.2 284.6	COAST GUARD TOWER 128.425 291.1	GND CON 124.15 275.8



ELEV 130	TDZE 116
----------	----------



REIL Rws 5 and 14 HIRL Rws 5-23 and 14-32 FAF to MAP 4.2 NM	CATEGORY A B C D S-ILS 32 * 316/24 200 (200-½) S-LOC 32 520/24 404 (400-½) 520/40 404 (400-¾) CIRCLING 600-1 640-1 900-2¼ 900-2½ 470 (500-1) 510 (600-1) 770 (800-2¼) 770 (800-2½)
---	--

NE-1, 07 OCT 2021 to 04 NOV 2021

NE-1, 07 OCT 2021 to 04 NOV 2021