

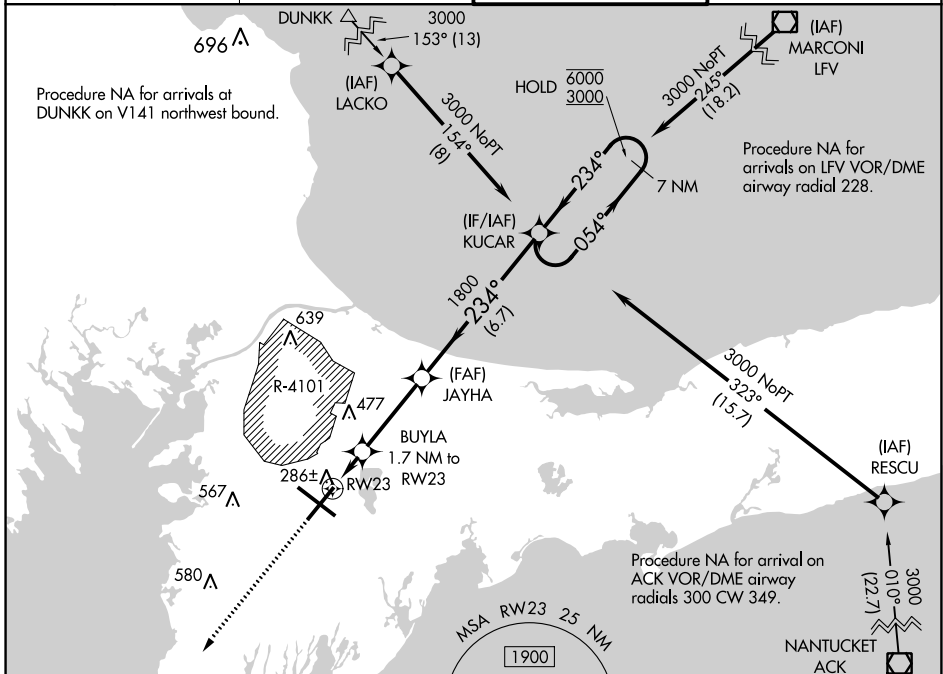
WAAS CH 97337 W23A	APP CRS 234°	Rwy Idg TDZE Apt Elev	8000 126 130
--	------------------------	-----------------------------	---

RNAV (GPS) RWY 23

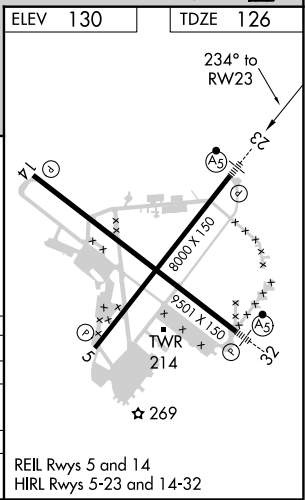
CAPE COD COAST GUARD AIR STATION (F'MH)

RNP APCH. ⚠ For uncompensated Baro-VNAV systems, procedure NA below -15°C or above 54°C. Circling NA NE of Rwy 14 and NW of Rwy 23. For inop ALS, increase LNAV/VNAV all Cats visibility to RVR 5500 and LNAV Cats C and D visibility to RVR 6000.	MALSR 	MISSED APPROACH: Climb to 3000 direct GLESO and hold.
--	------------------	---

ATIS 120.475 236.825	BOSTON APP CON * 118.2 284.6	COAST GUARD TOWER 128.425 291.1	GND CON 124.15 275.8
---------------------------------------	---	--	---------------------------------------



	ELEV 130	TDZE 126		
3000 *LNAV only.	GLESO	BUYLA 1.7 NM to RW23	JAYHA 1800	KUCAR 7 NM Holding Pattern 054° → 6000 ← 234° 3000 GP 3.00° TCH 54
RW23 → *1.1 NM to RW23 → 0.6 NM → 3.4 NM → 6.7 NM →				
CATEGORY LPV DA LNAV/VNAV DA LNAV MDA CIRCLING	A 540/24 450 (500-1)	B 414 (500-1/2) 640-1 510 (600-1)	C 200 (200-1/2) 341 (400-3/4) 770 (800-2/4)	D 414 (500-3/4) 770 (800-2/2)



NE-1, 07 OCT 2021 to 04 NOV 2021

NE-1, 07 OCT 2021 to 04 NOV 2021