

LOC I-MCU <b>110.7</b>	APP CRS <b>044°</b>	Rwy Idg TDZE Apt Elev	<b>8001</b> <b>535</b> <b>559</b>
---------------------------	------------------------	-----------------------------	---

# ILS RWY 4 (SA CAT I)

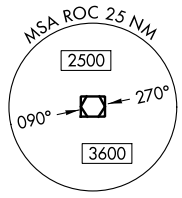
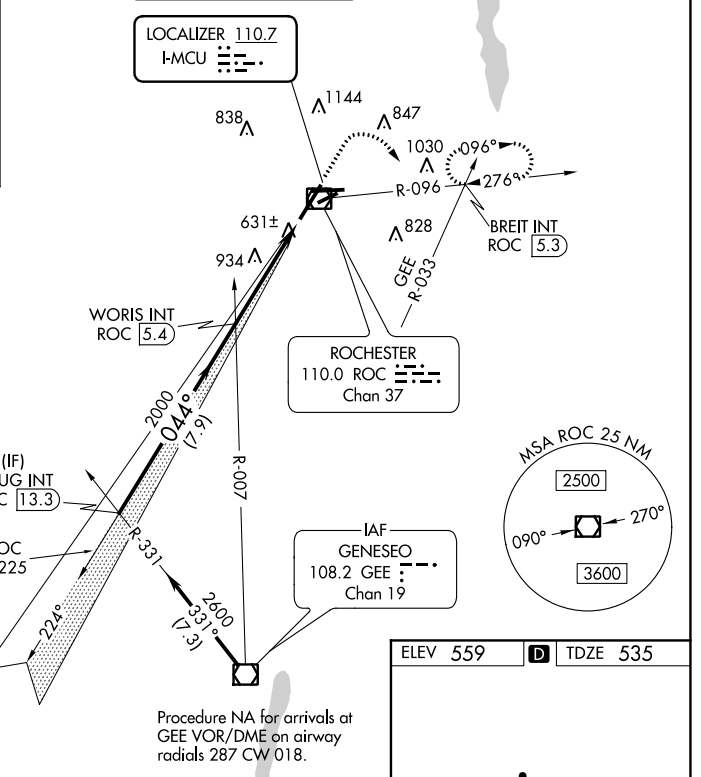
FREDERICK DOUGLASS - GREATER ROCHESTER INTL (ROC)

Requires specific OPSPEC, MSPEC, or LOA approval and use of the HUD to DA.	ALSF-2 	MISSED APPROACH: Climb to 1100 then climbing right turn to 3000 on heading 135° and ROC VOR/DME R-096 to BREIT INT/ROC 5.3 DME and hold, continue climb-in-hold to 3000.
--	------------	--

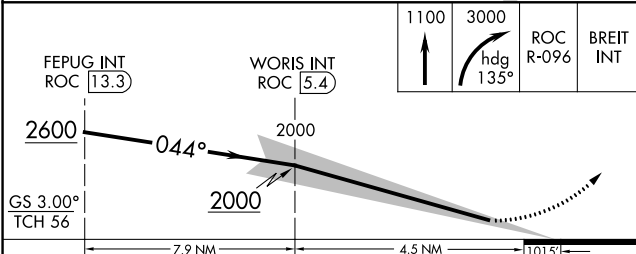
ATIS <b>124.825</b>	ROCHESTER APP CON <b>119.55 269.6</b>	ROCHESTER TOWER <b>118.3 254.3</b>	GND CON <b>121.7</b>	CLNC DEL <b>118.8 343.65</b>
------------------------	--	---------------------------------------	-------------------------	---------------------------------

ALTERNATE MISSED APCH FIX

GENESEO  
GEE  
108.2  
Chan 19

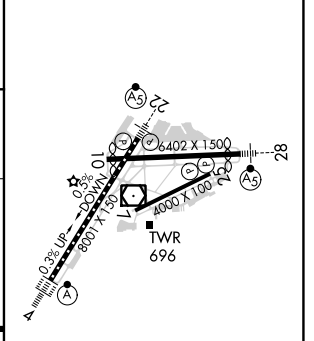


Procedure NA for arrivals at GEE VOR/DME on airway radials 287 CW 018.



CATEGORY	A	B	C	D
S-ILS 4	RA 157/14		150 DA 685	

ELEV 559	<b>D</b> TDZE 535
----------	-------------------



## SA CATEGORY I ILS - SPECIAL AIRCREW & AIRCRAFT CERTIFICATION REQUIRED

TDZ/CL Rwy 4  
REIL Rwy 7, 10 and 25  
MIRL Rwy 7-25  
HIRL Rwy 10-28 and 4-22

NE-2, 04 NOV 2021 to 02 DEC 2021

NE-2, 04 NOV 2021 to 02 DEC 2021