

LOC/DME I-ROC 109.5 Chan 32	APP CRS 280°	Rwy Idg 5802 TDZE 550 Apt Elev 559
---	------------------------	---

ILS or LOC RWY 28

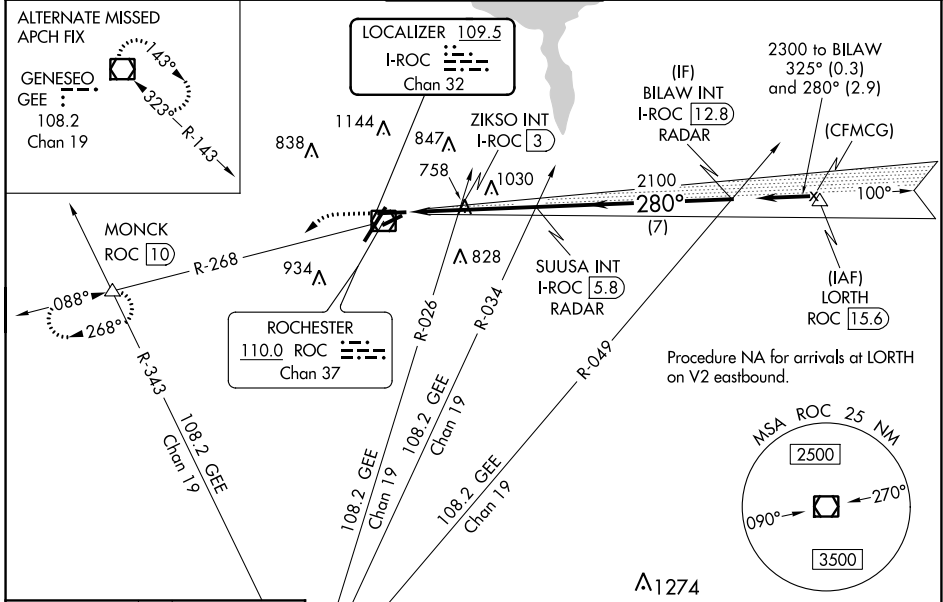
FREDERICK DOUGLASS - GREATER ROCHESTER INTL (ROC)

▼ Helicopter visibility reduction below RVR 4000 NA.
▲ Multiple unshielded lights in final approach area.
 For inop MALS, increase S-ILS 28 all Cats visibility to RVR 4500 and S-LOC 28 Cat A/B visibility to RVR 5500. For inop MALS with ZIKSO fix minimums, increase S-LOC 28 Cat A/B visibility to RVR 5500 and Cat C/D visibility to 1 $\frac{1}{2}$.

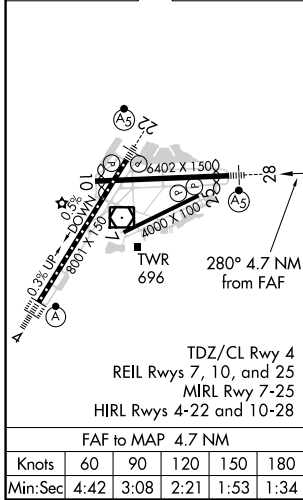
MALS

 MISSED APPROACH: Climb to 2000 then climbing left turn to 3000 on heading 230° and ROC VOR/DME R-268 to MONCK INT/ROC 10 DME and hold.

ATIS 124.825	ROCHESTER APP CON 119.55 269.6	ROCHESTER TOWER 118.3 254.3	GND CON 121.7	CLNC DEL 118.8 343.65
------------------------	--	---------------------------------------	-------------------------	---------------------------------



ELEV 559	D	TDZE 550
----------	----------	----------



2000	3000	ROC R-268	MONCK	SUUSA INT I-ROC 5.8	BILAW INT I-ROC 12.8
*LOC only					
CATEGORY	A	B	C	D	
S-ILS 28	821/40		271 (300- $\frac{3}{4}$)		
S-LOC 28	1200/40	650 (700- $\frac{3}{4}$)		1200-1 $\frac{1}{2}$ 650 (700-1 $\frac{1}{2}$)	
C CIRCLING	1200-1	641 (700-1)		1500-2 $\frac{3}{4}$ 941 (1000-2 $\frac{3}{4}$) 1500-3 941 (1000-3)	
ZIKSO FIX MINIMUMS (DUAL VOR RECEIVERS OR DME REQUIRED)					
S-LOC 28	1020/40	470 (500- $\frac{3}{4}$)		1020/50 470 (500-1)	
C CIRCLING	1060-1	501 (600-1)		1500-2 $\frac{3}{4}$ 941 (1000-2 $\frac{3}{4}$) 1500-3 941 (1000-3)	
Knots	60	90	120	150	180
Min:Sec	4:42	3:08	2:21	1:53	1:34

NE-2, 04 NOV 2021 to 02 DEC 2021

NE-2, 04 NOV 2021 to 02 DEC 2021