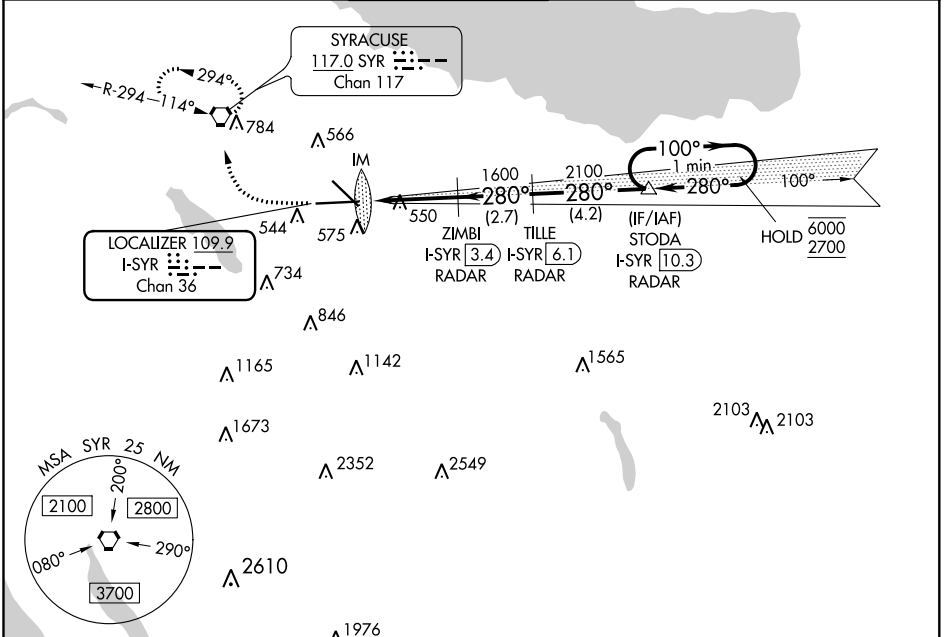


LOC/DME I-SYR 109.9 Chan 36	APP CRS 280°	Rwy Idg TDZE Apt Elev	9003 413 421
---	------------------------	-----------------------------	---

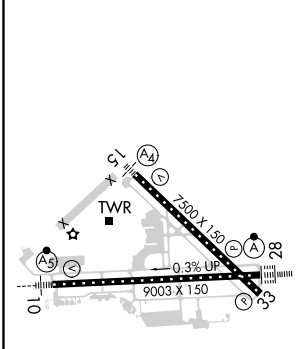
ILS RWY 28 (SA CAT I)
SYRACUSE HANCOCK INTL (SYR)

DME or RADAR required.	ALS-F2	MISSED APPROACH: Climb to 1100 then climbing right turn to 3000 direct SYR VORTAC and hold, continue climb-in-hold to 3000.
Requires specific OPSPEC, MSPEC, or LOA approval and use of HUD to DH.		

ATIS 124.225	SYRACUSE APP CON 126.125 269.125	SYRACUSE TOWER 120.3 239.0	GND CON 121.7 348.6	CLNC DEL 125.05 257.775
------------------------	--	--------------------------------------	-------------------------------	-----------------------------------



ELEV 421	D	TDZE 413
----------	----------	----------



CATEGORY	A	B	C	D
S-ILS 28	RA 150/14 150 DA 563			

SA CATEGORY I ILS - SPECIAL AIRCREW & AIRCRAFT CERTIFICATION REQUIRED

TDZ/CL Rwy 28
HIRL Rwy 10-28 and 15-33

NE-2, 04 NOV 2021 to 02 DEC 2021

NE-2, 04 NOV 2021 to 02 DEC 2021