

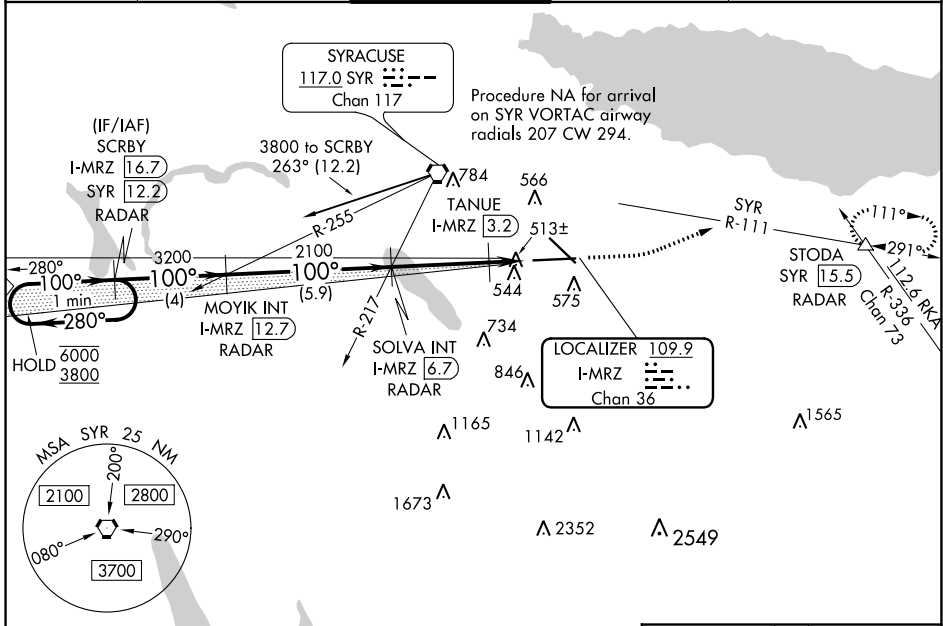
LOC/DME I-MRZ 109.9 Chan 36	APP CRS 100°	Rwy ldg TDZE Apt Elev 9003 421 421
--	------------------------	--

ILS or LOC RWY 10

SYRACUSE HANCOCK INTL (SYR)

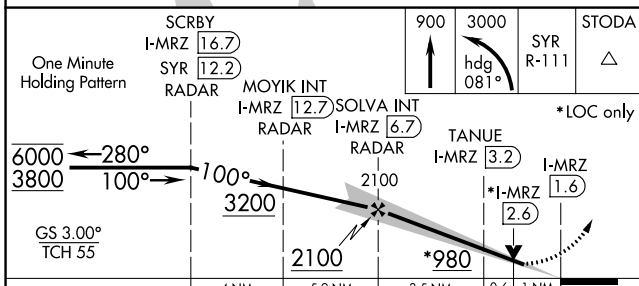
DME or RADAR required.		MALSR 	MISSED APPROACH: Climb to 900 then climbing left turn to 3000 on heading 081° and on SYR VORTAC R-111 to STODA INT/ SYR VORTAC 15.5 DME/RADAR and hold.	
<p>▼ TANUE fix minimums, for inoperative ALS, increase S-LOC 10</p> <p>▲ Cats C and D visibility to RVR 5500.</p> <p>**RVR 1800 authorized with use of FD or AP or HUD to DA.</p>				

ATIS 124.225	SYRACUSE APP CON 126.125 269.125	SYRACUSE TOWER 120.3 239.0	GND CON 121.7 348.6	CLNC DEL 125.05 257.775
------------------------	--	--------------------------------------	-------------------------------	-----------------------------------

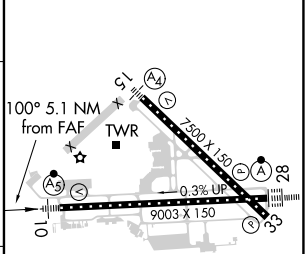


NE-2, 04 NOV 2021 to 02 DEC 2021

NE-2, 04 NOV 2021 to 02 DEC 2021



ELEV 421	D TDZE 421
----------	-------------------



CATEGORY	A	B	C	D
S-ILS 10**	621/24 200 (200-1/2)			
S-LOC 10	980/24	559 (600-1/2)	980/60	559 (600-1 1/4)
C CIRCLING	980-1	559 (600-1)	1020-1 5/8 599 (600-1 5/8)	1180-2 1/2 759 (800-2 1/2)
TANUE FIX MINIMUMS (DME REQUIRED)				
S-LOC 10	780/24	359 (400-1/2)	780/30	359 (400-5/8)
C CIRCLING	900-1 479 (500-1)	920-1 499 (500-1)	1020-1 1/2 599 (600-1 1/2)	1180-2 1/2 759 (800-2 1/2)

TDZ/CL Rwy 28	
HIRL Rwy 10-28 and 15-33	
FAF to MAP 5.1 NM	
Knots	60 90 120 150 180
Min:Sec	5:06 3:24 2:33 2:02 1:42