

APP CRS	Rwy Idg	9003
280°	TDZE	413
	Apt Elev	421

RNAV (RNP) Y RWY 28

SYRACUSE HANCOCK INTL (SYR)

RNP AR APCH.

▼ For uncompensated Baro-VNAV systems, procedure NA below -18°C or above 54°C. For inop ALS, increase RNP 0.15 all Cats visibility to 1%. For inop ALS, increase RNP 0.30 all Cats visibility to 1%.

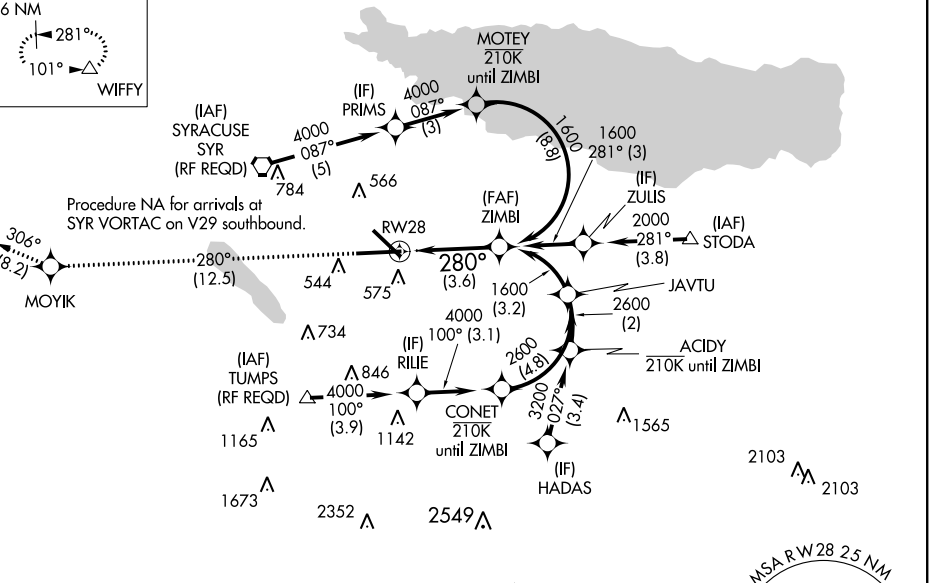
ALSF-2



MISSED APPROACH: Climb to 3000 on track 280° to MOYIK and on track 306° to WIFFY and hold.

ATIS	SYRACUSE APP CON	SYRACUSE TOWER	GND CON	CLNC DEL
124.225	126.125 269.125	120.3 239.0	121.7 348.6	125.05 257.775

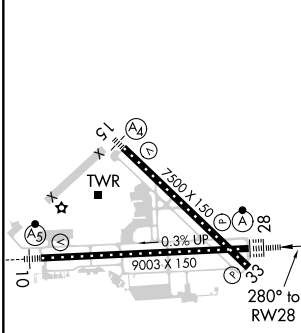
MISSED APCH FIX



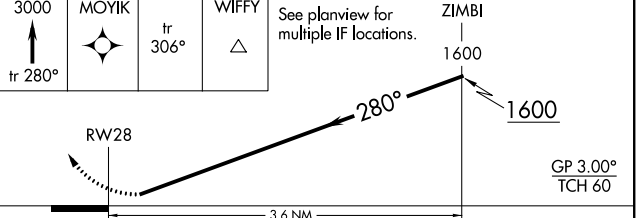
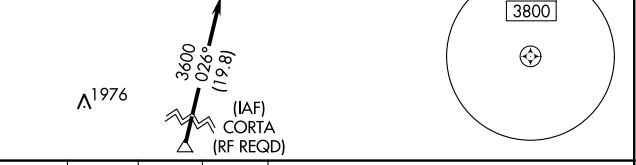
NE-2, 04 NOV 2021 to 02 DEC 2021

NE-2, 04 NOV 2021 to 02 DEC 2021

ELEV	421	D	TDZE	413
------	------------	----------	------	------------



TDZ/CL Rwy 28	HIRL Rwy 10-28 and 15-33
---------------	--------------------------



CATEGORY	A	B	C	D
RNP 0.15 DA		862/55	449 (500-1)	
RNP 0.30 DA		957-1 3/4	544 (600-1%)	

AUTHORIZATION REQUIRED