

LOC I-IAG 110.1	APP CRS 280°	Rwy ldg TDZE Apt Elev	9129 588 592
---------------------------	------------------------	-----------------------------	---

ILS Y or LOC Y RWY 28R

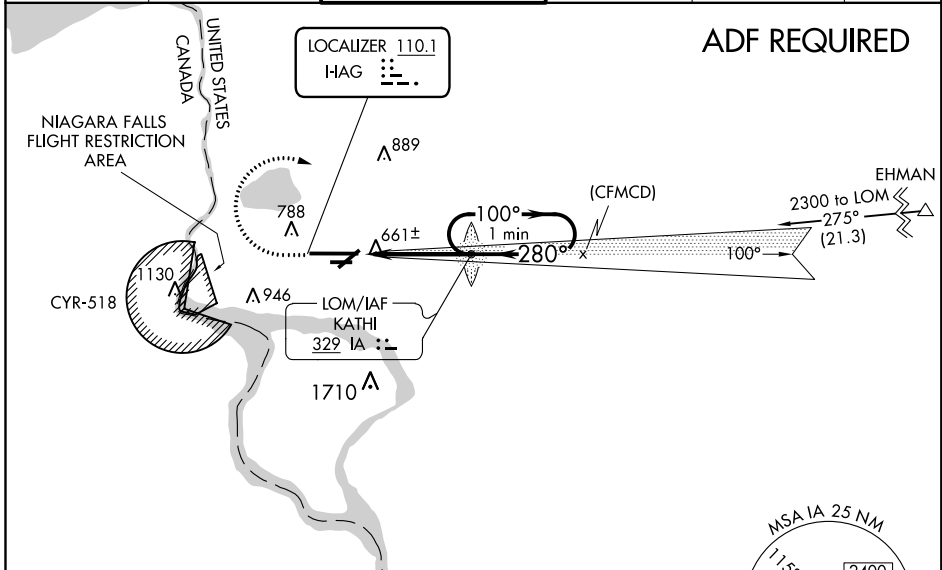
NIAGARA FALLS INTL (IAG)

⚠ ADF Required. When local altimeter setting not received, use Buffalo Niagara Intl altimeter setting and increase all DA 51 feet and all MDA 60 feet; increase Circling Cat C and D visibility ¼ SM. For inop MALS, increase S-ILS 28R all Cats visibility to RVR 4500 and S-LOC 28R all Cats visibility to RVR 5000. For inop MALS when using Buffalo Niagara Intl altimeter setting, increase S-ILS 28R all Cats visibility to RVR 4500, S-LOC 28R Cats A/B visibility to RVR 5000, and S-LOC 28R Cats C/D visibility to RVR 6000. Rwy 28R helicopter visibility reduction below ¾ SM NA. Rwy 6, 10R, 24, 28L helicopter visibility reduction below 1 SM NA. Circling Rwy 6, 10R, 24, 28L NA at night.

MALS

MISSED APPROACH:
 Climb to 1200 then climbing right turn to 3200 on heading 050° then direct KATHI LOM and hold.

ATIS 120.8 269.4	BUFFALO APP CON 126.5 317.6	NIAGARA TOWER* 118.5 (CTAF) 0 349.0	GND CON 125.3 275.8	CLNC DEL 119.25 251.1	UNICOM 122.95
----------------------------	---------------------------------------	--	-------------------------------	---------------------------------	-------------------------

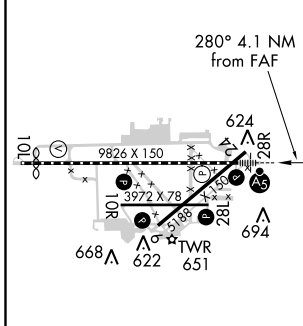


ADF REQUIRED

NE-2, 04 NOV 2021 to 02 DEC 2021

NE-2, 04 NOV 2021 to 02 DEC 2021

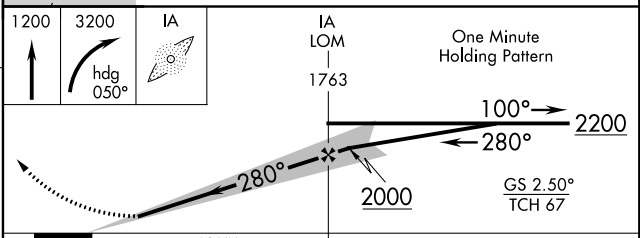
ELEV 592	D	TDZE 588
----------	----------	----------



TDZ/CL Rwy 28R
 REIL Rws 6, 10R, 24, and 28L
 HIRL Rwy 10L-28R
 MIRL Rws 6-24 and 10R-28L

FAF to MAP 4.1 NM

Knots	60	90	120	150	180
Min:Sec	4:06	2:44	2:03	1:38	1:22



CATEGORY	A	B	C	D
S-ILS 28R		838/40	250 (300-¾)	
S-LOC 28R		920/40	332 (400-¾)	
C CIRCLING	1100-1	508 (600-1)	1280-2 688 (700-2)	1280-2 ¼ 688 (700-2 ¼)

ILS Y or LOC Y RWY 28R