


| | | | |
|------------|-------------|----------|-------------|
| LOM IA | APP CRS | Rwy ldg | 9129 |
| 329 | 280° | TDZE | 588 |
| | | Apt Elev | 592 |

NDB RWY 28R

NIAGARA FALLS INTL (IAG)

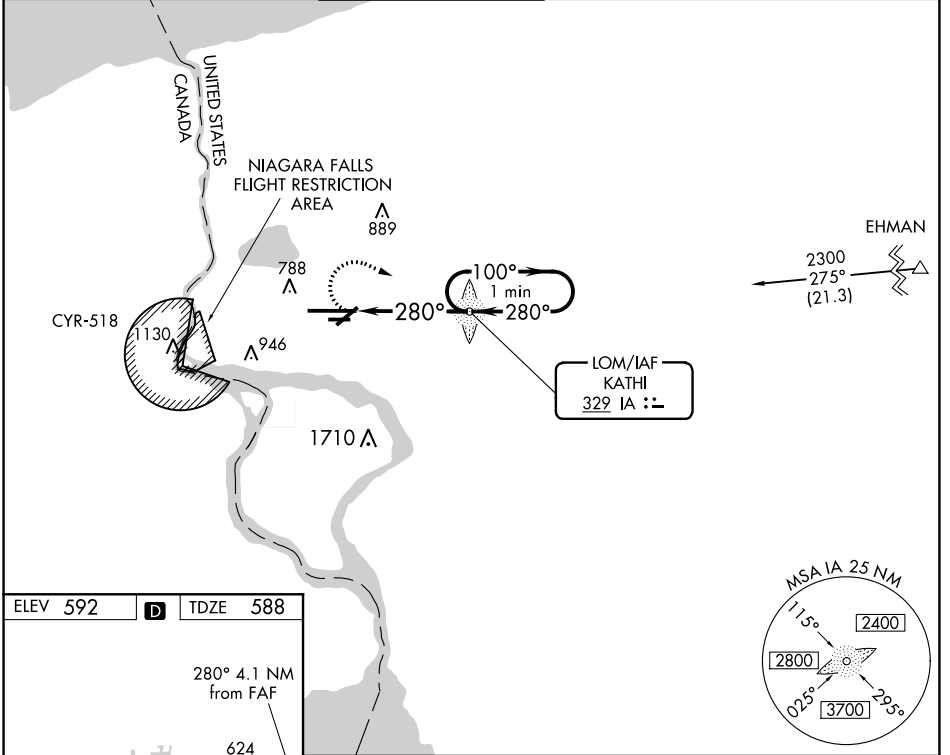
⚠ When local altimeter setting not received, use Buffalo Niagara Intl altimeter setting and increase all MDA 60 feet, increase S-28R Cat C and D visibility 1/4 SM and Circling Cat C and D 1/4 SM. For inop MALS, increase S-28R Cats A/B visibility to RVR 5500 and Cats C/D visibility to 1 3/4. For inop MALS when using Buffalo Niagara Intl altimeter setting, increase S-28R Cats C/D visibility to 1 1/4. Rwy 28R helicopter visibility reduction below 1/4 SM NA. Rwy 6, 10R, 24, 28L helicopter visibility reduction below 1 SM NA. Circling Rwy 6, 10R, 24, 28L NA at night.

MALS R



MISSED APPROACH:
Climbing right turn to 3200 direct KATHI LOM and hold, continue climb-in-hold to 3200.

| | | | | | |
|--------------------|--------------------|-----------------------------|--------------------|---------------------|---------------|
| ATIS | BUFFALO APP CON | NIAGARA TOWER* | GND CON | CLNC DEL | UNICOM |
| 120.8 269.4 | 126.5 317.6 | 118.5 (CTAF) 0 349.0 | 125.3 275.8 | 119.25 251.1 | 122.95 |



| | | |
|----------|----------|----------|
| ELEV 592 | D | TDZE 588 |
|----------|----------|----------|

280° 4.1 NM from FAF

TDZ/CL Rwy 28R
REIL Rws 6, 10R, 24, and 28L
HIRL Rwy 10L-28R
MIRL Rws 6-24 and 10R-28L

FAF to MAP 4.1 NM

| | | | | | |
|---------|------|------|------|------|------|
| Knots | 60 | 90 | 120 | 150 | 180 |
| Min:Sec | 4:06 | 2:44 | 2:03 | 1:38 | 1:22 |

3200 IA VGSI and descent angles not coincident (VGSI Angle 2.50/TCH 67).

One Minute Holding Pattern

| CATEGORY | A | B | C | D |
|-------------------|---------|---------------|-----------------------|-------------------------------|
| S-28R | 1200/40 | 612 (700-3/4) | 1200-1 3/8 | 612 (700-1 3/8) |
| C CIRCLING | 1200-1 | 608 (700-1) | 1280-2 688 (700-2) | 1280-2 1/4 688 (700-2 1/4) |

NE-2, 04 NOV 2021 to 02 DEC 2021

NE-2, 04 NOV 2021 to 02 DEC 2021