

WAAS CH <b>99432</b> <b>W28B</b>	APP CRS <b>280°</b>	Rwy ldg <b>9129</b> TDZE <b>588</b> Apt Elev <b>592</b>
--	------------------------	---

# RNAV (GPS) RWY 28R

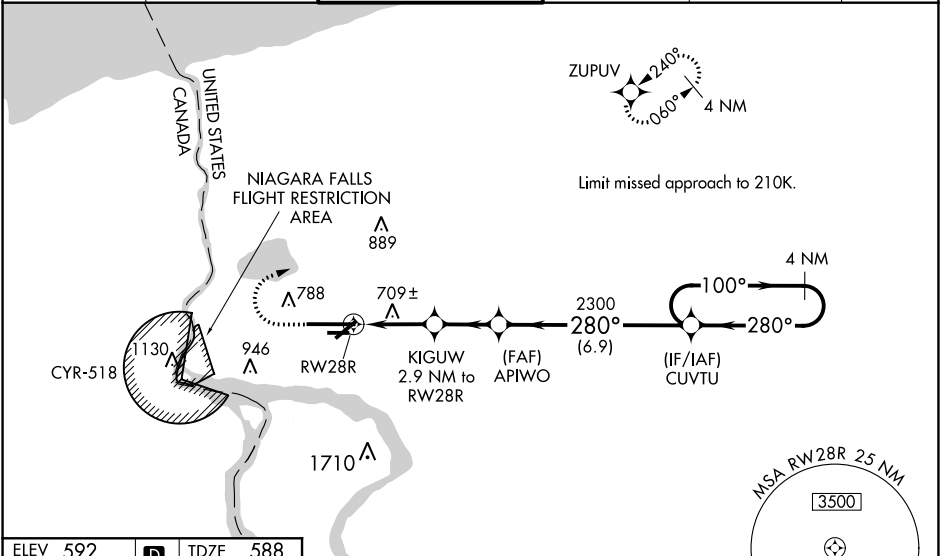
NIAGARA FALLS INTL (IAG)

**⚠** For uncompensated Baro-VNAV systems, LNAV/VNAV NA below -18°C (0°F) or above 54°C (130°F). DME/DME RNP-0.3 NA. When local altimeter setting not received, use Buffalo Niagara Intl altimeter setting and increase all DA 51 feet and all MDA 60 feet; increase LNAV/VNAV all Cats visibility 1/8 SM and Circling Cat C and D 1/4 SM. Baro-VNAV and VDP NA with Buffalo Niagara Intl altimeter setting. For inop MALSRS increase LNAV/VNAV visibility all Cats to RVR 6000 and LNAV all Cats visibility to RVR 5500. For inop MALSRS when using Buffalo Niagara Intl altimeter setting, increase LPV all Cats and LNAV Cats C/D visibility to RVR 5500 and LNAV/VNAV all Cats visibility to RVR 6000. Rwy 28R helicopter visibility reduction below 3/4 SM NA. Rwy 6, 10R, 24, 28L, 28R, helicopter visibility reduction below 1 SM NA. Circling Rwy 6, 10R, 24, 28L, NA at night.

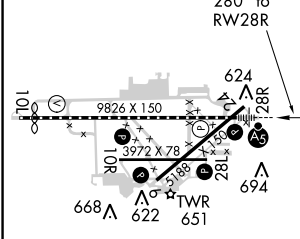
MALSRS

**MISSED APPROACH:**  
Climb to 1040 then climbing right turn to 3600 direct ZUPUV and hold, continue climb-in-hold to 3600.

ATIS <b>120.8 269.4</b>	BUFFALO APP CON <b>126.5 317.6</b>	NIAGARA TOWER* <b>118.5 (CTAF) 0 349.0</b>	GND CON <b>125.3 275.8</b>	CLNC DEL <b>119.25 251.1</b>	UNICOM <b>122.95</b>
----------------------------	---------------------------------------	---	-------------------------------	---------------------------------	-------------------------



ELEV 592	<b>D</b>	TDZE 588
----------	----------	----------



TDZ/CL Rwy 28R  
REIL Rws 6,10R, 24, and 28L **Ⓛ**  
HIRL Rwy 10L-28R **Ⓛ**  
MIRL Rws 6-24 and 10R-28L **Ⓛ**

**RADAR REQUIRED**

1040 3600 ZUPUV VGSI and RNAV glidepath not coincident (VGSI Angle 2.50/TCH 67). 4 NM Holding Pattern

\*LNAV only. 1560\* 2300 3100 100° 280° GP 3.00° TCH 55

CATEGORY	A	B	C	D
LPV DA		838/40	250 (300-3/4)	
LNAV/VNAV DA		957/40	369 (400-3/4)	
LNAV MDA		960/40	372 (400-3/4)	
<b>C</b> CIRCLING	1100-1	508 (600-1)	1280-2 688 (700-2)	1280-2 1/4 688 (700-2 1/4)

NE-2, 04 NOV 2021 to 02 DEC 2021

NE-2, 04 NOV 2021 to 02 DEC 2021