


TACAN IAG Chan <b>47</b> (111.0)	APP CRS <b>286°</b>	Rwy Idg TDZE Apt Elev	<b>9129</b> <b>588</b> <b>592</b>
--	------------------------	-----------------------------	---

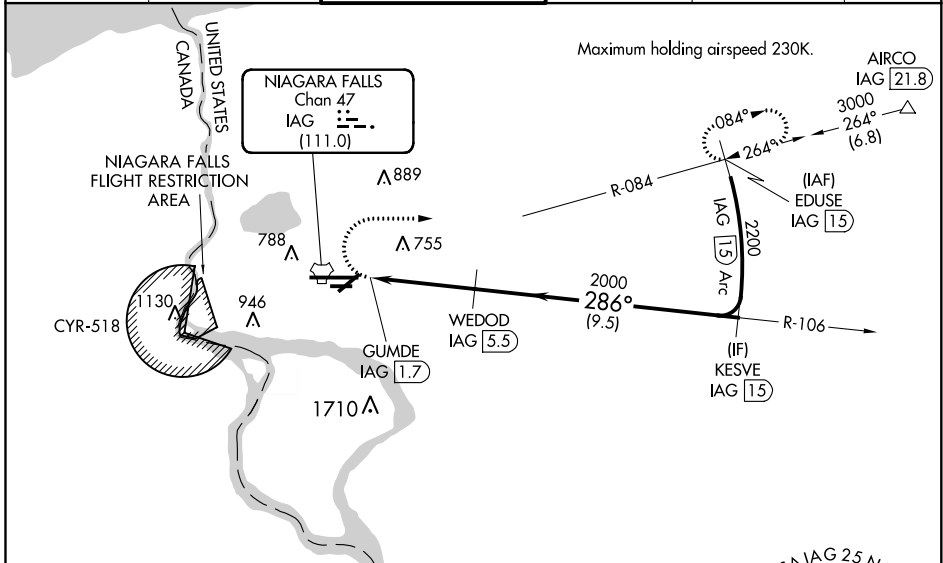
# TACAN RWY 28R

NIAGARA FALLS INTL (IAG)

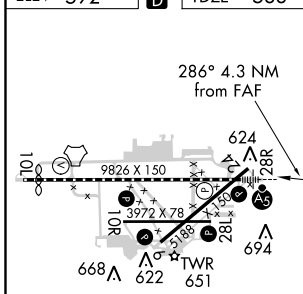
⚠ When local altimeter setting not received, use Buffalo Niagara Intl altimeter setting; increase all MDA 60 feet and S-28R visibility Cat C, D and E to RVR 4500 and Circling Cat C, D and E visibility ¼ SM. Circling NA for Cat E south of Rwy 10L-28R. For inop MALSR, increase S-28R Cat A/B visibility to RVR 5000 and Cat C/D/E to RVR 6000. Rwy 28R helicopter visibility reduction below ¾ SM NA. Rwy 6, 10R, 24, 28L helicopter visibility reduction below 1 SM NA. Circling Rwy 6, 10R, 24, 28L NA at night.

MALSRL  
  
**MISSED APPROACH:**  
 Climbing right turn to 3000 on heading 100° and IAG R-084 to EDUSE/IAG 15 DME and hold.

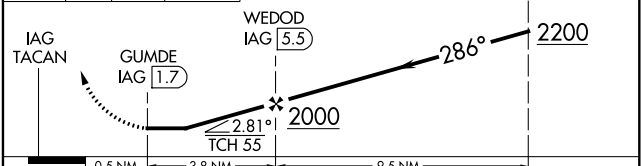
ATIS <b>120.8 269.4</b>	BUFFALO APP CON <b>126.5 317.6</b>	NIAGARA TOWER★ <b>118.5 (CTAF) 349.0</b>	GND CON <b>125.3 275.8</b>	CLNC DEL <b>119.25 251.1</b>	UNICOM <b>122.95</b>
----------------------------	---------------------------------------	---	-------------------------------	---------------------------------	-------------------------



ELEV 592	<b>D</b>	TDZE 588
----------	----------	----------



3000	hdg 100°	IAG R-084	EDUSE IAG 15	KEVSE IAG 15
------	----------	-----------	--------------	--------------



CATEGORY	A	B	C	D	E
S-28R	1000/40 412 (500-¾)				
CIRCLING	1100-1	508 (600-1)	1280-2 688 (700-2)	1360-2½ 768 (800-2½)	1360-2¾ 768 (800-2¾)

TDZ/CL Rwy 28R  
 REL Rwys 6, 10R, 24, and 28L  
 HIRL Rwy 10L-28R  
 MIRL Rwys 6-24 and 10R-28L

NE-2, 04 NOV 2021 to 02 DEC 2021

NE-2, 04 NOV 2021 to 02 DEC 2021