

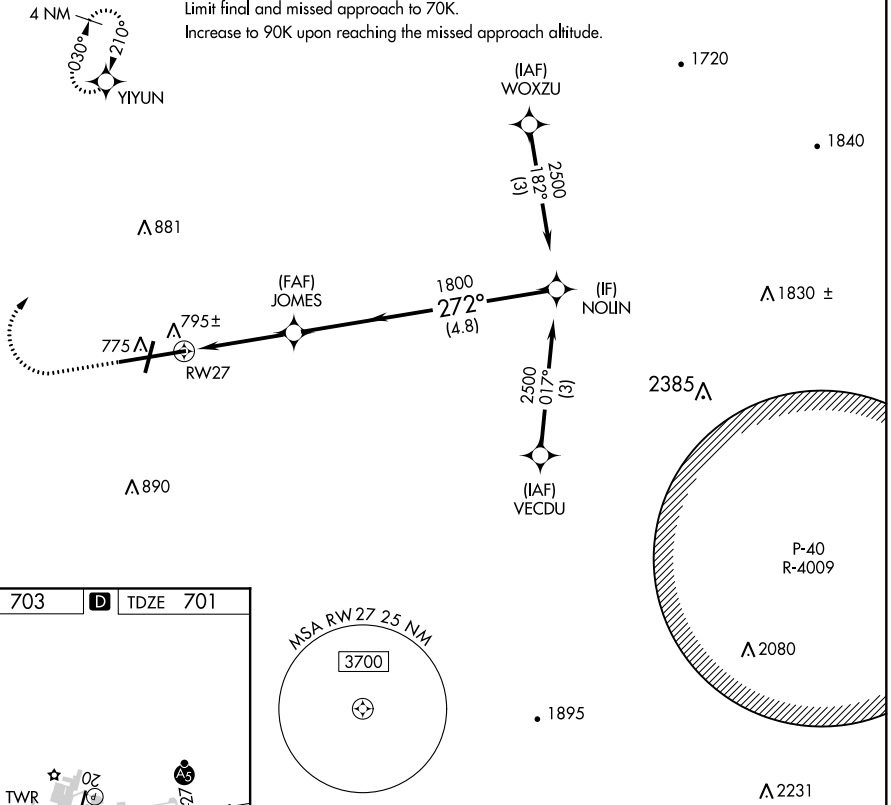
APP CRS	Rwy Idg	7000
272°	TDZE	701
	Apt Elev	703

COPTER RNAV (GPS) RWY 27

HAGERSTOWN RGNL-RICHARD A HENSON FLD (HGR)

<p>▼ Inop table does not apply. DME/DME RNP-0.3 NA. VDP NA with Martinsburg altimeter setting. When local altimeter setting not received, use Martinsburg altimeter setting and increase MDA 80 feet.</p>		<p>MALSR</p>	<p>MISSED APPROACH: Climb to 1200 then climbing right turn to 2500 direct YIYUN and hold.</p>	
ASOS	POTOMAC APP CON	HAGERSTOWN TOWER ★	GND CON	UNICOM
126.375	126.825 239.025	120.3 (CTAF) 0 225.4	120.8	122.95

Limit initial and intermediate approach to 90K.
Limit final and missed approach to 70K.
Increase to 90K upon reaching the missed approach altitude.



NE-3, 04 NOV 2021 to 02 DEC 2021

NE-3, 04 NOV 2021 to 02 DEC 2021

ELEV 703	D	TDZE 701
----------	----------	----------

REIL Rwy 2 and 20
REIL Rwy 9
MIRL Rwy 2-20
HIRL Rwy 9-27

1200	2500	YIYUN	VGSI and descent angles not coincident (VGSI Angle 3.00/TCH 55).
		JOMES	NOLIN
<p>1 NM to RWY 27</p>		1800	2500
<p>1 NM 1 NM 4.8 NM</p>		COPTER	
CATEGORY	COPTER		
LNAV MDA	1060-½ 359 (400-½)		