

LOC/DME I-HGR 111.9 Chan 56	APP CRS 272°	Rwy Idg 7000 TDZE 701 Apt Elev 703
---	------------------------	---

ILS or LOC RWY 27

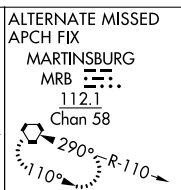
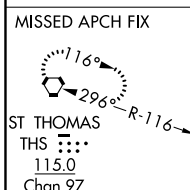
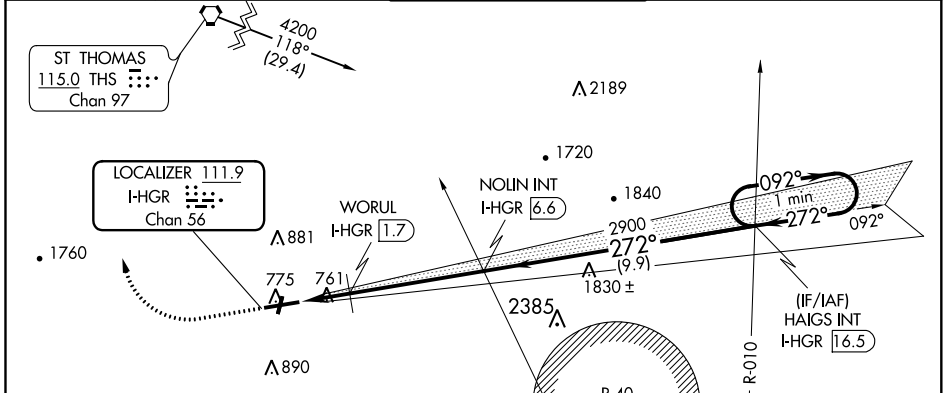
HAGERSTOWN RGNL-RICHARD A HENSON FLD (HGR)

⚠ Rwy 20 helicopter visibility reduction below 1 SM NA. Circling Rwy 20 NA at night. When local altimeter setting not received, use Martinsburg altimeter setting and increase DA to 956 and all MDA 80 feet; increase S-LOC 27 and Circling Cat C/D visibility ¼ mile, WORUL Fix minimums increase S-LOC 27 Cat C/D visibility ¼ mile and Circling Cat D visibility ¼ mile. For inop MALSRL when using Martinsburg altimeter setting, increase S-ILS 27 all Cats visibility to ¾ mile. VDP NA when using Martinsburg altimeter setting.

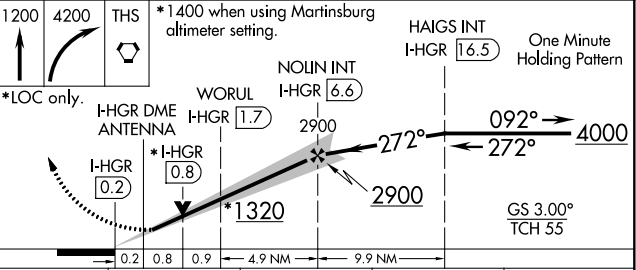


MISSED APPROACH:
Climb to 1200 then climbing right turn to 4200 direct THS VORTAC and hold.

ASOS 126.375	POTOMAC APP CON 126.825 239.025	HAGERSTOWN TOWER ★ 120.3 (CTAF) 225.4	GND CON 120.8	UNICOM 122.95
------------------------	---	---	-------------------------	-------------------------



ELEV 703	D	TDZE 701
-----------------	----------	-----------------



REIL Rws 2 and 20
REIL Rwy 9 **0**
MIRL Rwy 2-20
HIRL Rwy 9-27 **0**

FAF to MAP 6.8 NM

Knots	60	90	120	150	180
Min:Sec	6:48	4:32	3:24	2:43	2:16

CATEGORY	A	B	C	D
S-ILS 27	901-½ 200 (200-½)			
S-LOC 27	1320-½	619 (700-½)	1320-1⅓	619 (700-1⅓)
C CIRCLING	1320-1	617 (700-1)	1320-1¾	1320-2 617 (700-2)
WORUL FIX MINIMUMS				
S-LOC 27	1040-½	339 (400-½)	1040-⅝	339 (400-⅝)
C CIRCLING	1160-1	457 (500-1)	1200-1½	1320-2 497 (500-1½)

ILS or LOC RWY 27

NE-3, 04 NOV 2021 to 02 DEC 2021

NE-3, 04 NOV 2021 to 02 DEC 2021