

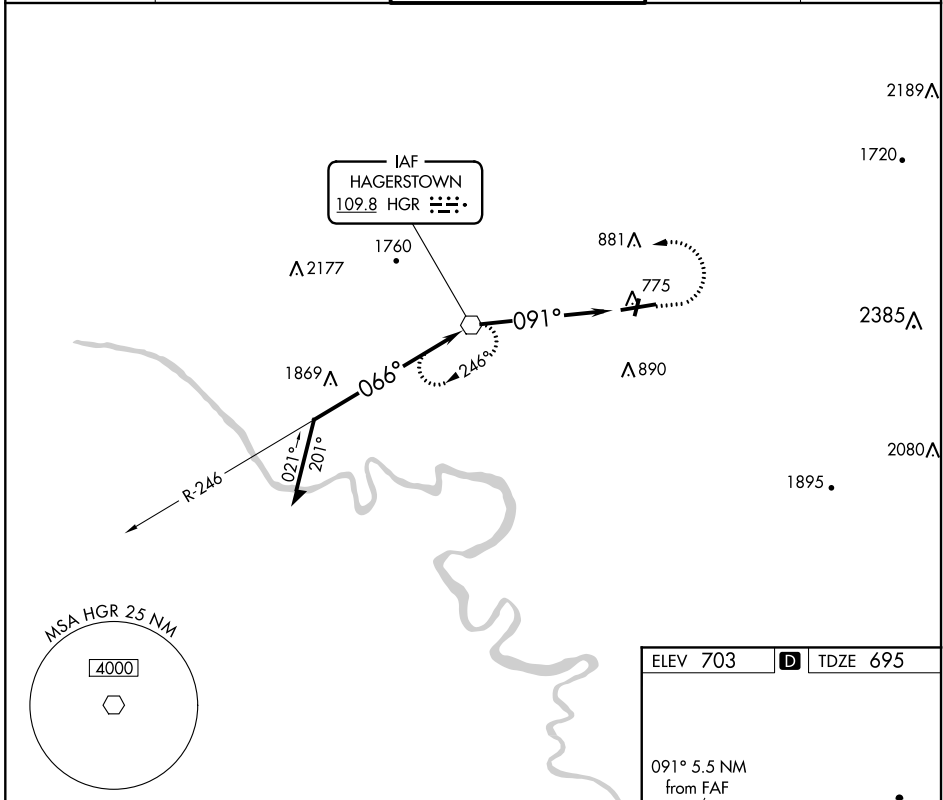
VOR HGR <b>109.8</b>	APP CRS <b>091°</b>	Rwy Idg TDZE Apt Elev	<b>7000</b> <b>695</b> <b>703</b>
-------------------------	------------------------	-----------------------------	---

# VOR RWY 9

HAGERSTOWN RGNL-RICHARD A HENSON FLD (HGR)

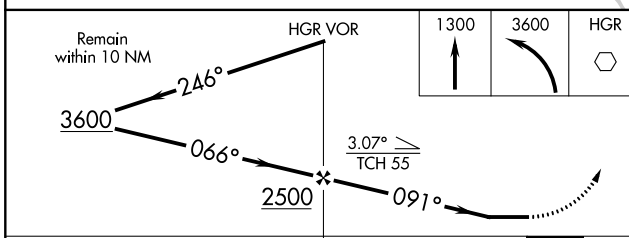
**⚠** Circling Rwy 20 NA at night. MISSED APPROACH: Climb to 1300 then climbing left turn to 3600 direct HGR VOR and hold, continue climb-in-hold to 3600.

ASOS <b>126.375</b>	POTOMAC APP CON <b>126.825 239.025</b>	HAGERSTOWN TOWER ★ <b>120.3 (CTAF) 225.4</b>	GND CON <b>120.8</b>	UNICOM <b>122.95</b>
------------------------	---	---	-------------------------	-------------------------



NE-3, 04 NOV 2021 to 02 DEC 2021

NE-3, 04 NOV 2021 to 02 DEC 2021



ELEV 703	<b>D</b> TDZE 695
----------	-------------------

Inset diagram showing the tower (TWR 779) and runway lighting (REIL Rwy 9, MIRL Rwy 2-20, HIRL Rwy 9-27). Altitudes shown include 7000 X 150, 27, and 45. The diagram also shows the 091° heading from the FAF and a 5.5 NM distance.

REIL Rwy 2 and 20  
REIL Rwy 9  
MIRL Rwy 2-20  
HIRL Rwy 9-27

FAF to MAP 5.5 NM					
Knots	60	90	120	150	180
Min:Seq	5:30	3:40	2:45	2:12	1:50

CATEGORY	A	B	C	D
S-9	1080-1	385 (400-1)	1080-1 $\frac{1}{8}$	385 (400-1 $\frac{1}{8}$ )
<b>C</b> CIRCLING	1160-1	457 (500-1)	1200-1 $\frac{1}{2}$ 497 (500-1 $\frac{1}{2}$ )	1320-2 617 (700-2)