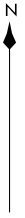


BRNKO TWO ARRIVAL (RNAV) Transition Routes
(BRNKO.BRNKO2) 31DEC20

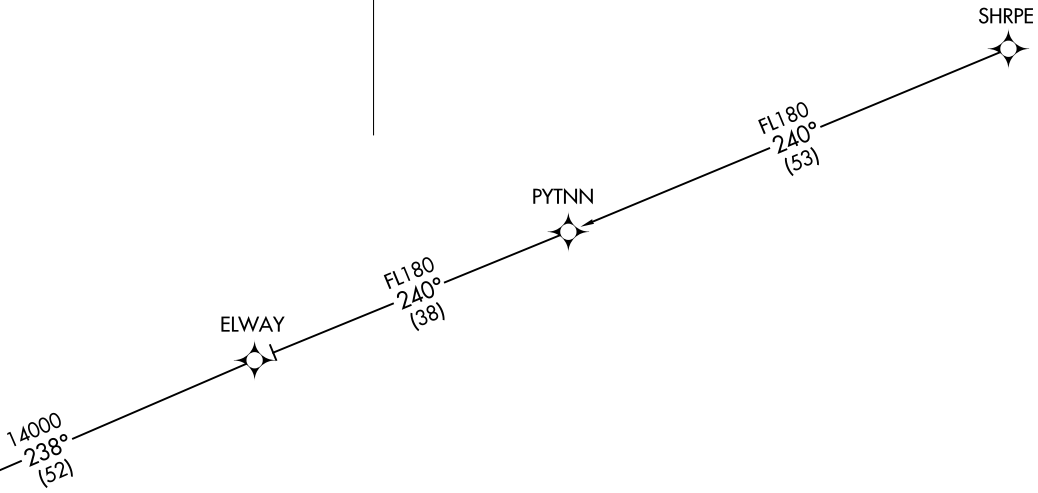
DENVER APP CON
127.05 363.25
APA ATIS
120.3
BJC ATIS
126.25
CENTENNIAL TOWER
118.9
METRO TOWER *
118.6 233.7



BRNKO
16000
14000



See following page
for arrival routes



- NOTE: RADAR required.
- NOTE: RNAV 1.
- NOTE: GPS required.
- NOTE: Turbojet aircraft only.

NOTE: Chart not to scale.

SHRPE TRANSITION (SHRPE.BRNKO2)

(CONTINUED ON FOLLOWING PAGE)

(BRNKO.BRNKO2) 21224
AL-571.5 (FAA)
DENVER, COLORADO

(BRNKO.BRNKO2) 21168

AL-5715 (FAA)

BRNKO TWO ARRIVAL (RNAV) Arrival Routes

DENVER, COLORADO

DENVER APP CON
 127.05 363.25
 APA ATIS
 120.3
 BJC ATIS
 126.25
 CENTENNIAL TOWER
 118.9
 METRO TOWER*
 118.6 233.7

BRNKO
 16000
 14000

ORRNG
 9000
 Ldg KFNL and KGXY

BLTZZ
 12000 250K

PICKK
 14000

BWLIN
 10000

NORTHERN
 COLORADO
 RGNL

GREELEY-WELD COUNTY

REDZN
 10000

VANCE
 BRAND

HBALL
 9000
 Ldg KLMO

PYDRT
 9000
 Ldg KBJC

KAYOO

WOLTS

ROCKY
 MOUNTAIN
 METRO

AAYES
 9000
 Ldg KAPA

LOWRE

NOTE: RADAR required.
 NOTE: RNAV 1.
 NOTE: GPS required.
 NOTE: Turbojet aircraft only.

NOTE: Chart not to scale.

CENTENNIAL

(NARRATIVE ON FOLLOWING PAGE)

BRNKO TWO ARRIVAL (RNAV) Arrival Routes

DENVER, COLORADO

(BRNKO.BRNKO2) 31DEC20

SW-1, 04 NOV 2021 to 02 DEC 2021

SW-1, 04 NOV 2021 to 02 DEC 2021

ARRIVAL ROUTE DESCRIPTION

LANDING KAPA: From BRNKO on track 247° to cross PICKK at or below 14000, then on track 247° to cross BLTZZ at 12000 and at or below 250K, then on track 247° to cross BWLIN at 10000, then on track 189° to cross REDZN at 10000, then on track 176° to cross PYDRT at 9000, then on track 176° to cross AAYES at 9000, then on track 150°. Expect RADAR vectors to final approach course.

LANDING KBJC: From BRNKO on track 247° to cross PICKK at or below 14000, then on track 247° to cross BLTZZ at 12000 and at or below 250K, then on track 247° to cross BWLIN at 10000, then on track 189° to cross REDZN at 10000, then on track 176° to cross PYDRT at 9000. Expect RNAV (GPS) RWY 12L approach or visual approach as assigned by ATC.

LANDING KFNL/KGXY: From BRNKO on track 247° to cross PICKK at or below 14000, then on track 247° to cross BLTZZ at 12000 and at or below 250K, then on track 247° to cross ORRNG at 9000, then on track 247°. Expect RADAR vectors to final approach course.

LANDING KLMO: From BRNKO on track 247° to cross PICKK at or below 14000, then on track 247° to cross BLTZZ at 12000 and at or below 250K, then on track 247° to cross BWLIN at 10000, then on track 189° to cross REDZN at 10000, then on track 176° to cross HBALL at 9000, then on track 176°. Expect RADAR vectors to final approach course.

LOST COMMUNICATIONS

LANDING KAPA: From AAYES direct LOWRE and execute RNAV (GPS) RWY 17L approach.

LANDING KBJC: From PYDRT execute RNAV (GPS) RWY 12L approach.

LANDING KLMO: From HBALL direct KAYOO direct WOLTS and execute RNAV (GPS) RWY 29 approach.

LANDING KFNL/KGXY: Proceed to GLL VOR/DME, execute approach.

SW-1, 04 NOV 2021 to 02 DEC 2021

SW-1, 04 NOV 2021 to 02 DEC 2021