

LARKS TWO ARRIVAL

AL-9077 (FAA)

DENVER, COLORADO

DENVER APP CON
 120.35 379.3
 APA ATIS
 120.3
 BJC ATIS
 126.25
 CFO ATIS
 119.025
 DEN D-ATIS ARR
 125.6 379.9
 KBKF ATIS
 119.675 259.3

GILL
 114.2 GLL
 Chan 89
 N40°30.23'-W104°33.18'

DENVER
 117.9 DEN
 Chan 126
 N39°48.75'-W104°39.64'

JEFFCO
 115.4 BJC
 Chan 101

CENTENNIAL
 108.2 APA
 N39°34.51'-W104°50.71'

RED TABLE
 113.0 DBL
 Chan 77

LARKS
 N39°15.44'-W105°18.31'
TURBOJET VERTICAL NAVIGATION
PLANNING INFORMATION
 Expect 17000 250K
 or as assigned by ATC.

PAYDD
 N39°24.10'
 W105°04.73'

TERRO
 N38°53.47'
 W105°52.38'

MURFE
 N39°08.29'
 W105°29.47'

FALCON
 116.3 FQF
 Chan 110
 N39°41.41'
 W104°37.26'

BLACK FOREST
 112.5 BRK
 Chan 72

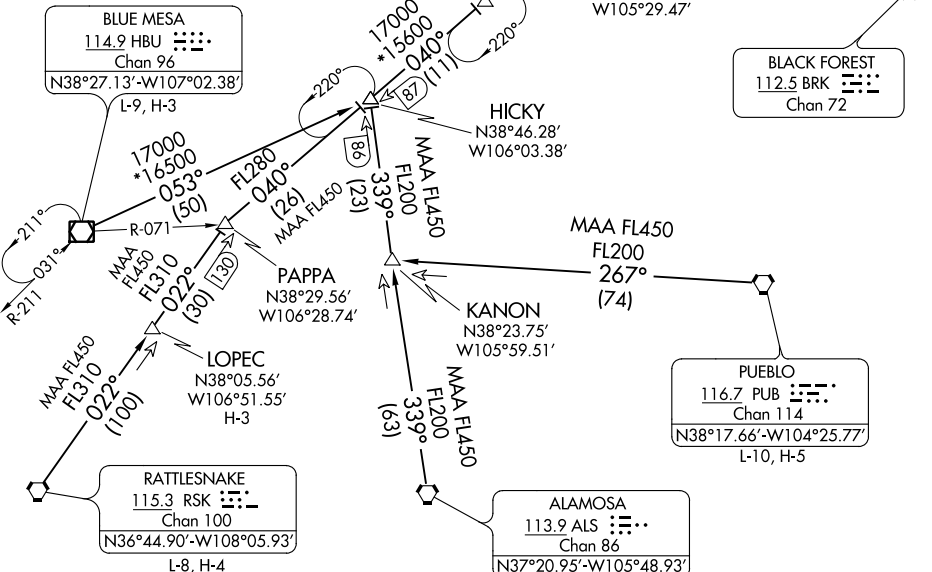
BLUE MESA
 114.9 HBU
 Chan 96
 N38°27.13'-W107°02.38'

HICKY
 N38°46.28'
 W106°03.38'

PUEBLO
 116.7 PUB
 Chan 114
 N38°17.66'-W104°25.77'

RATTLESNAKE
 115.3 RSK
 Chan 100
 N36°44.90'-W108°05.93'

ALAMOSA
 113.9 ALS
 Chan 86
 N37°20.95'-W105°48.93'



NOTE: Adjacent STAR is POWDR ARRIVAL.
 NOTE: RADAR required.
 NOTE: Chart not to scale.

(NARRATIVE ON FOLLOWING PAGE)

SW-1, 04 NOV 2021 to 02 DEC 2021

SW-1, 04 NOV 2021 to 02 DEC 2021

LARKS TWO ARRIVAL

DENVER, COLORADO

ARRIVAL ROUTE DESCRIPTION

ALAMOSA TRANSITION (ALS.LARKS2): From over ALS VORTAC on ALS R-339 and FQF R-220 to LARKS. Thence. . . .

BLUE MESA TRANSITION (HBU.LARKS2): From over HBU VOR/DME on HBU R-053 and FQF R-220 to LARKS. Thence. . . .

LOPEC TRANSITION (LOPEC.LARKS2): From over LOPEC on RSK R-022 and FQF R-220 to LARKS. Thence. . . .

PUEBLO TRANSITION (PUB.LARKS2): From over PUB VORTAC on PUB R-267 to KANON; then on ALS R-339 and FQF R-220 to LARKS. Thence. . . .

RATTLESNAKE TRANSITION (RSK.LARKS2): From over RSK VORTAC on RSK R-022 and FQF R-220 to LARKS. Thence. . . .

. . . .from over LARKS on FQF R-220 to FALCON (FQF) VORTAC. Expect RADAR vectors to the final approach course at or before FALCON (FQF) VORTAC.

SW-1, 04 NOV 2021 to 02 DEC 2021

SW-1, 04 NOV 2021 to 02 DEC 2021