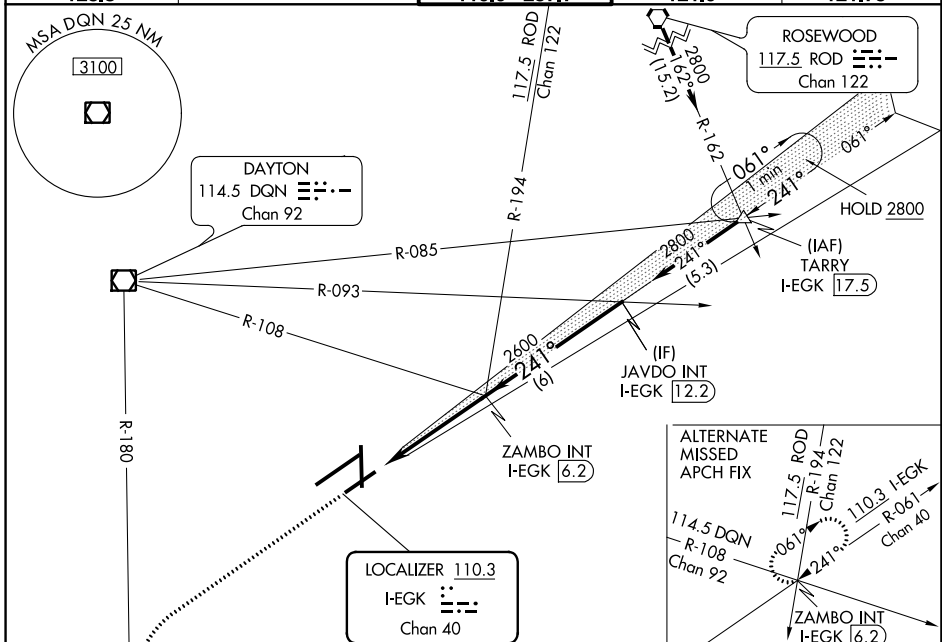


LOC I-EGK 110.3 Chan 40	APP CRS 241°	Rwy ldg TDZE Apt Elev 7001 1007 1009
--------------------------------------	------------------------	--

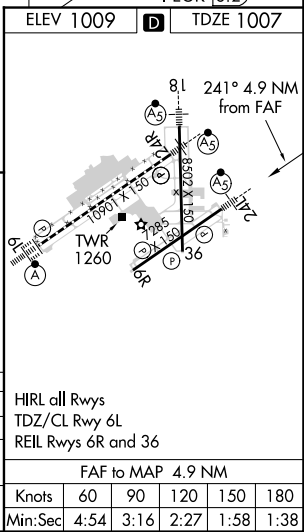
ILS or LOC RWY 24L

JAMES M COX DAYTON INTL (DAY)

DME required.		MALSR 	MISSED APPROACH: Climb to 3000 on heading 241° and DQN R-180 to MIMMS/DQN 18 DME and hold.	
ATIS 125.8	COLUMBUS APP CON 118.425 323.15	DAYTON TOWER 119.9 257.7	GND CON 121.9	CLNC DEL 121.75



ELEV 1009	TDZE 1007
VGSI and ILS glidepath not coincident (VGSI Angle 3.00/TCH 54).	
3000 DQN R-180 hdg 241° *LOC only.	MIMMS DQN 18 *I-EGK 2.6 ZAMBO INT I-EGK 6.2 JAVDO INT I-EGK 12.2 GS 3.00° TCH 50
CATEGORY	A B C D
S-ILS 24L #	1207/24 200 (200-½)
S-LOC 24L	1440/24 433 (500-½) 1440/40 433 (500-¾)
CIRCLING	1580-1 571 (600-1) 1580-1½ 571 (600-1½) 1640-2 631 (700-2)



EC-2, 02 DEC 2021 to 30 DEC 2021

EC-2, 02 DEC 2021 to 30 DEC 2021