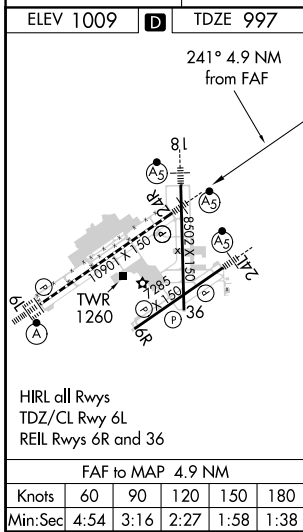
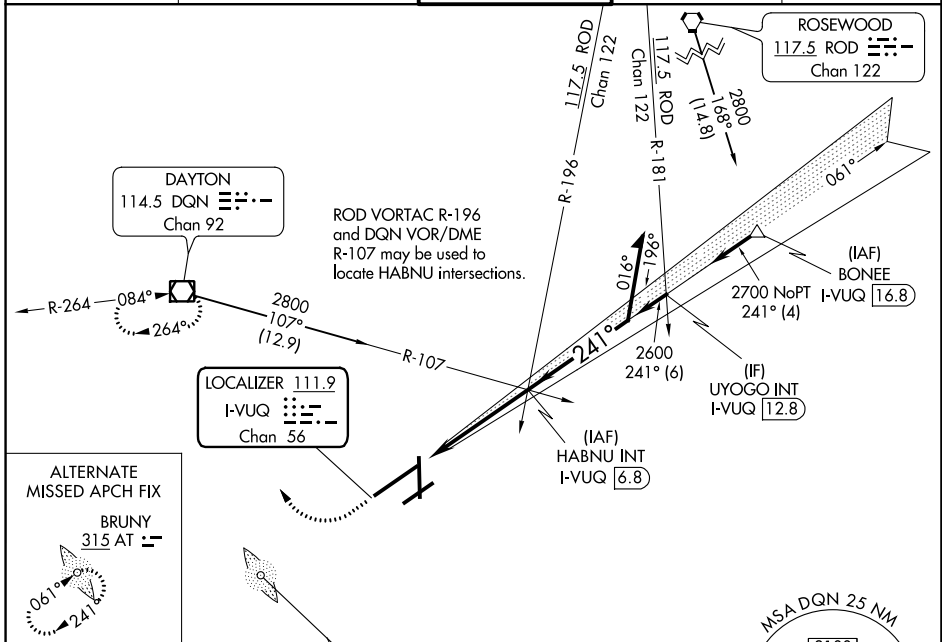


LOC/DME I-VUQ 111.9 Chan 56	APP CRS 241°	Rwy Idg 10900 TDZE 997 Apt Elev 1009
---	------------------------	---

ILS or LOC RWY 24R

JAMES M COX DAYTON INTL (DAY)

<p>Simultaneous approach authorized. For inop ALS, increase S-LOC 24R Cat C/D visibility to RVR 6000.</p>		<p>MALSR</p>	<p>MISSED APPROACH: Climb to 3000 then right turn direct DQN VOR/DME and hold.</p>	
ATIS 125.8	COLUMBUS APP CON 118.425 323.15	DAYTON TOWER 119.9 257.7	GND CON 121.9	CLNC DEL 121.75



3000	DQN	HABNU INT I-VUQ 6.8	Remain within 10 NM	
		<p>2600</p> <p>2800</p> <p>061°</p> <p>241°</p> <p>2600</p> <p>GS 3.00° TCH 55</p>	<p>1.1 NM</p> <p>3.8 NM</p>	
CATEGORY	A	B	C	D
S-ILS 24R	1203/24		206 (200-½)	
S-LOC 24R	1400/24	403 (400-½)	1400/40	403 (400-¾)
CIRCLING	1580-1	571 (600-1)	1580-1½ 571 (600-1½)	1640-2 631 (700-2)

EC-2, 02 DEC 2021 to 30 DEC 2021

EC-2, 02 DEC 2021 to 30 DEC 2021