

WAAS CH <b>90414</b> <b>W06B</b>	APP CRS <b>061°</b>	Rwy Idg TDZE Apt Elev	<b>7001</b> <b>1009</b> <b>1009</b>
--	------------------------	-----------------------------	---

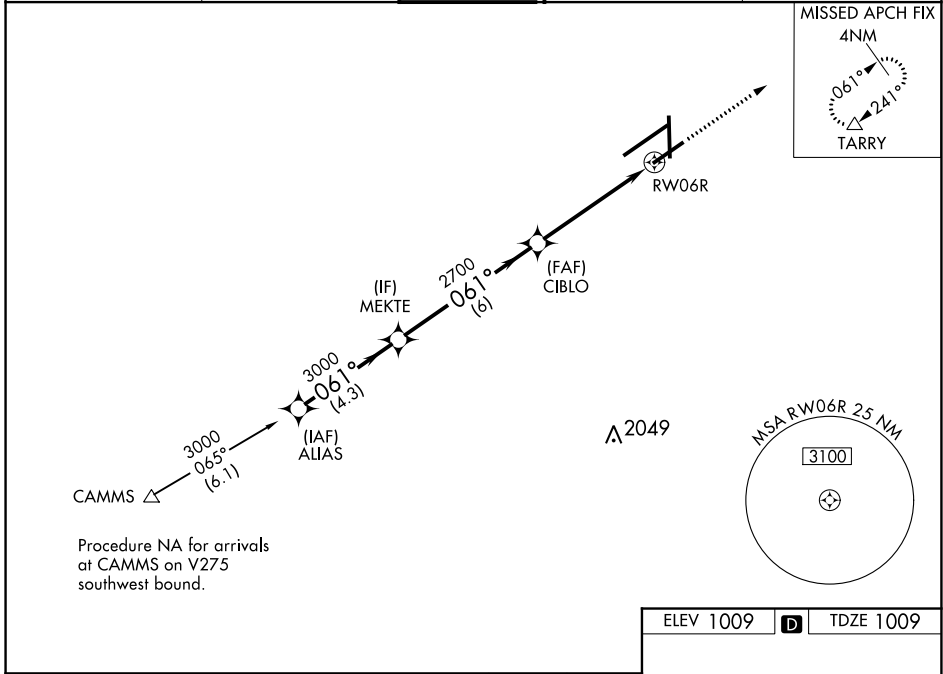
# RNAV (GPS) RWY 6R

JAMES M COX DAYTON INTL (DAY)

▼ For uncompensated Baro-VNAV systems, LNAV/VNAV NA below -19°C (-4°F) or above 54°C (130°F). Rwy 6R helicopter visibility reduction below ¾ SM NA. Simultaneous approach authorized. DME/DME RNP-0.3 NA. LNAV procedure NA during simultaneous operations. Use of FD or AP required during simultaneous operations.

MISSED APPROACH: Climb to 3000 direct TARRY and hold.

ATIS <b>125.8</b>	COLUMBUS APP CON <b>118.425 323.15</b>	DAYTON TOWER <b>119.9 257.7</b>	GND CON <b>121.9</b>	CLNC DEL <b>121.75</b>
----------------------	---	------------------------------------	-------------------------	---------------------------

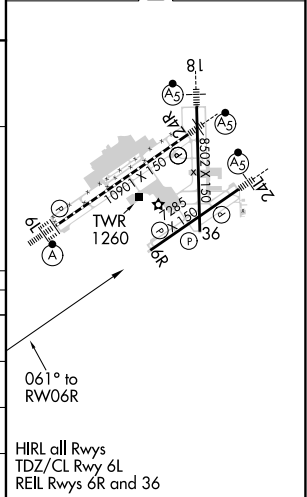


Procedure NA for arrivals at CAMMS on V275 southwest bound.

ELEV 1009	<b>D</b>	TDZE 1009
-----------	----------	-----------

VGSI and RNAV glidepath not coincident (VGSI Angle 3.00/TCH 50).

ALIAS	MEKTE	CIBLO	RW06R
3000	3000	2700	
GP 3.00°			
TCH 53			
4.3 NM	6 NM	3.6 NM	1.5 NM
CATEGORY	A	B	C
LPV DA		1259-¾	250 (300-¾)
LNAV/VNAV DA		1496-1¾	487 (500-1¾)
LNAV MDA	1520-1	511 (600-1)	1520-1½ 511 (600-1½)
CIRCLING	1580-1	571 (600-1)	1580-1½ 571 (600-1½)
			1640-2 631 (700-2)



EC-2, 02 DEC 2021 to 30 DEC 2021

EC-2, 02 DEC 2021 to 30 DEC 2021