

APP CRS	Rwy Idg	10900
061°	TDZE	998
	Apt Elev	1009

RNAV (RNP) Y RWY 6L

JAMES M COX DAYTON INTL (DAY)

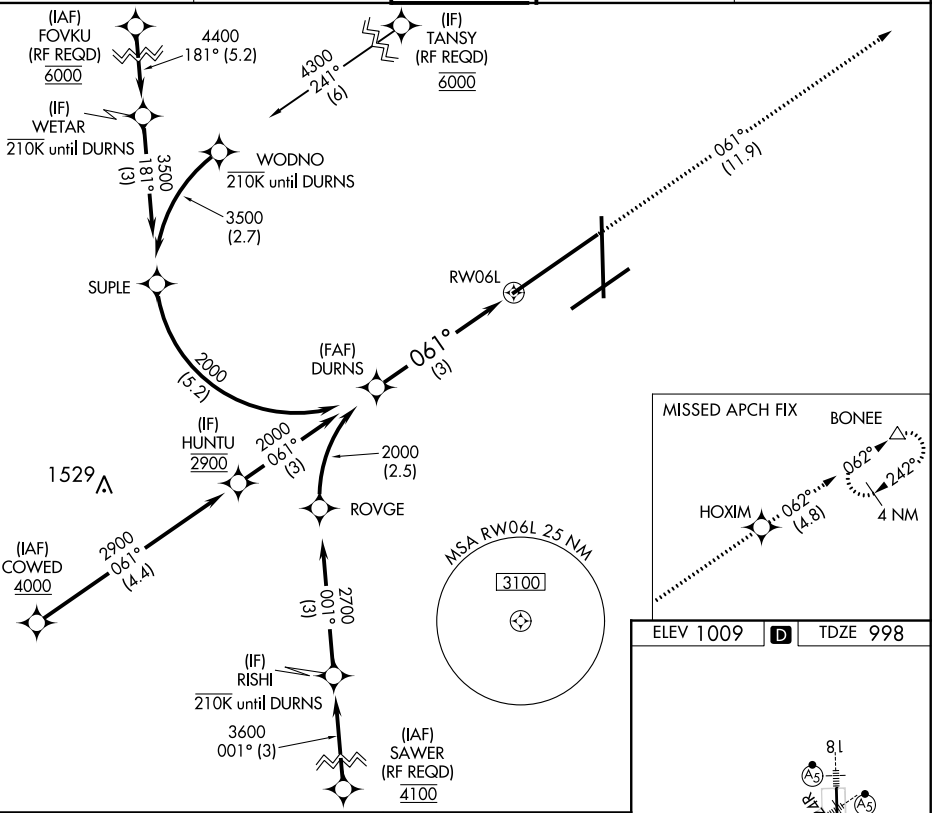
GPS required. For uncompensated Baro-VNAV systems, procedure NA below -19°C (-2°F) or above 54°C (130°F). For inop ALS, increase RNP 0.10 all Cats visibility to RVR 6000. For inop ALS, increase RNP 0.30 all Cats visibility to 1 5/8.

ALSF-2

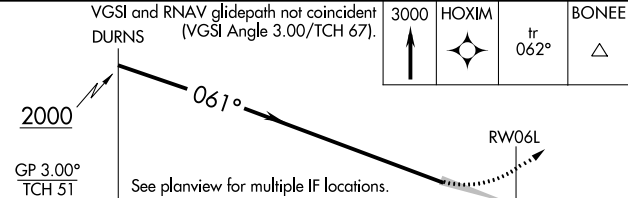
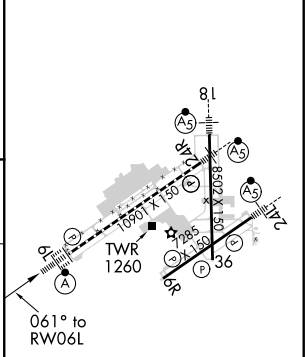


MISSED APPROACH: Climb to 3000 on the RNAV missed approach route to BONEE and hold.

ATIS 125.8	COLUMBUS APP CON 118.425 323.15	DAYTON TOWER 119.9 257.7	GND CON 121.9	CLNC DEL 121.75
----------------------	---	------------------------------------	-------------------------	---------------------------



ELEV 1009	D	TDZE 998
-----------	----------	----------



GP 3.00° TCH 51	See planview for multiple IF locations.			
3 NM				
CATEGORY	A	B	C	D
RNP 0.10 DA		1358/40	360 (400-3/4)	
RNP 0.30 DA		1464/60	466 (500-1 1/4)	

AUTHORIZATION REQUIRED

HIRL all Rwys
TDZ/CL Rwy 6L
REIL Rwys 6R and 36

EC-2, 02 DEC 2021 to 30 DEC 2021

EC-2, 02 DEC 2021 to 30 DEC 2021