


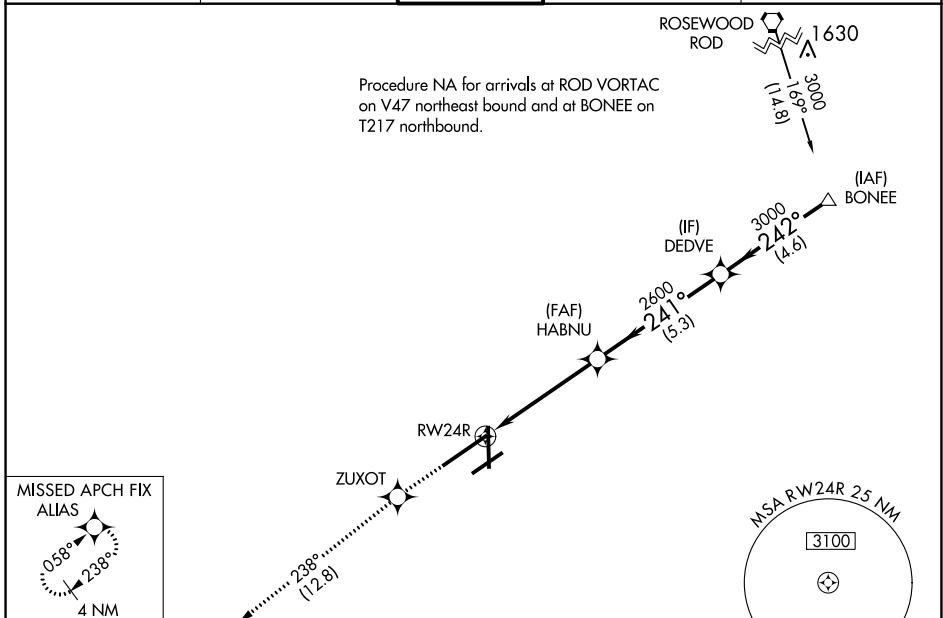
WAAS CH 66013 W24B	APP CRS 241°	Rwy Idg 10900 TDZE 997 Apt Elev 1009
--	------------------------	---

RNAV (GPS) Z RWY 24R

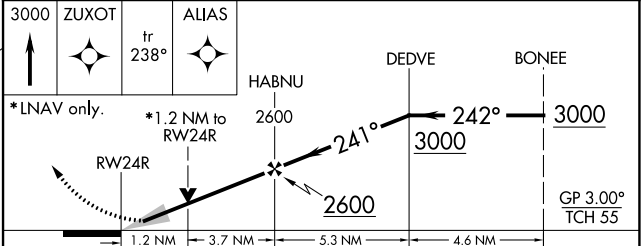
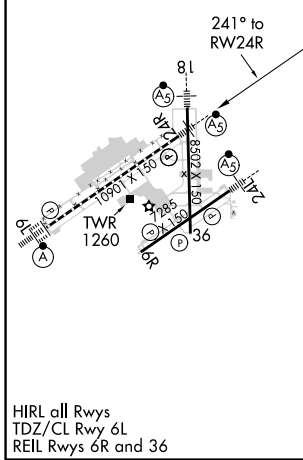
JAMES M COX DAYTON INTL (DAY)

RNP APCH.	<p>▼ For uncompensated Baro-VNAV systems, LNAV/VNAV NA below -19°C or above 54°C. Simultaneous approach authorized. LNAV procedure NA during simultaneous operations. Use of FD or AP required during simultaneous operations. For inop ALS, increase LNAV/VNAV all Cats visibility to RVR 4500.</p>	<p>MALSR</p> 	<p>MISSED APPROACH: Climb to 3000 direct ZUXOT and on track 238° to ALIAS and hold.</p>
-----------	--	--	---

ATIS 125.8	COLUMBUS APP CON 118.425 323.15	DAYTON TOWER 119.9 257.7	GND CON 121.9	CLNC DEL 121.75
----------------------	---	------------------------------------	-------------------------	---------------------------



ELEV 1009	D	TDZE 997
-----------	----------	----------



CATEGORY	A	B	C	D
LPV DA		1203/24	206 (200-½)	
LNAV/VNAV DA		1294/24	297 (300-½)	
LNAV MDA	1440/24	443 (500-½)	1440/45	443 (500-¾)
C CIRCLING	1580-1	571 (600-1)	1580-1½ 571 (600-1½)	1640-2 631 (700-2)

EC-2, 02 DEC 2021 to 30 DEC 2021

EC-2, 02 DEC 2021 to 30 DEC 2021