

# EL DORADO ONE DEPARTURE

D-ATIS  
124.6  
CLNC DEL  
125.45  
CPDLC  
GND CON  
121.9  
HOBBY TOWER  
118.7 256.9  
HOUSTON DEP CON  
132.25 285.425

**TOP ALTITUDE:  
16000**

EL DORADO  
115.5 ELD   
Chan 102  
N33°15.37'-W92°44.64'  
L-17, H-6

NOTE: RADAR required.  
NOTE: For aircraft destined KMEM  
or filed via Q32 or J42.

LUFKIN  
112.1 LFK   
Chan 58

ENJOY  
N31°16.73'  
W94°19.82'

MUSIQ  
N30°33.17'  
W94°53.53'

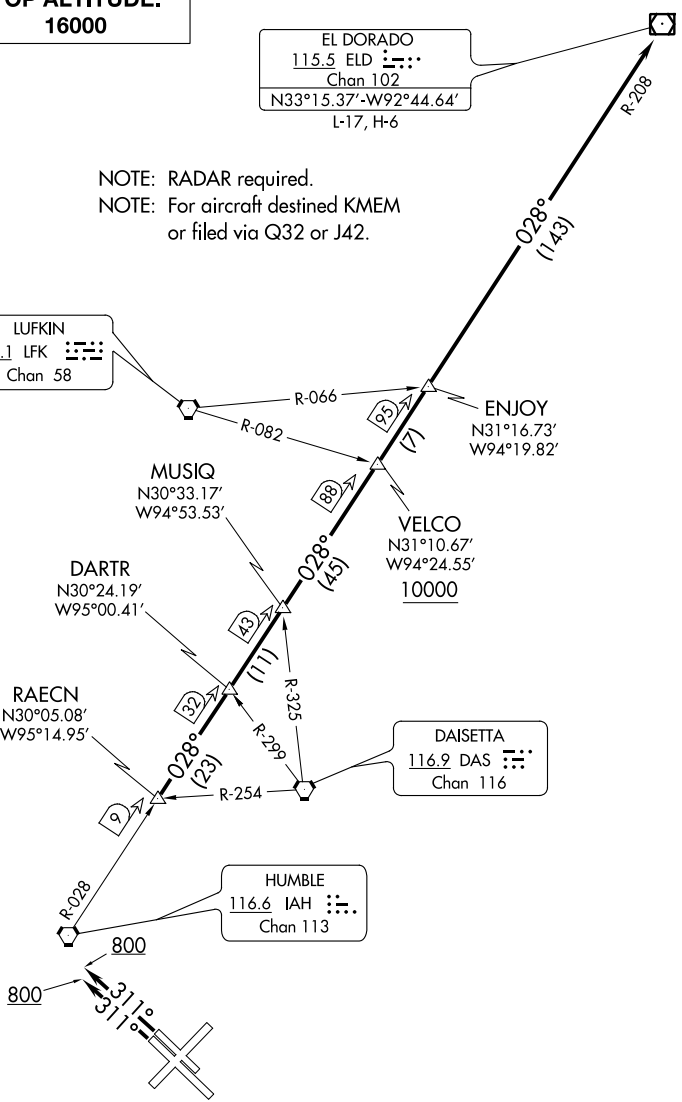
VELCO  
N31°10.67'  
W94°24.55'  
10000

DARTR  
N30°24.19'  
W95°00.41'

RAECN  
N30°05.08'  
W95°14.95'

DAISETTA  
116.9 DAS   
Chan 116

HUMBLE  
116.6 IAH   
Chan 113



SC-5, 02 DEC 2021 to 30 DEC 2021

SC-5, 02 DEC 2021 to 30 DEC 2021

**TAKEOFF MINIMUMS**  
Rwys 4, 13L/R, 31L/R: Standard.  
Rwy 22: Standard with minimum climb of 290' per NM to 1500.

NOTE: Chart not to scale. (NARRATIVE ON FOLLOWING PAGE)

# EL DORADO ONE DEPARTURE



## DEPARTURE ROUTE DESCRIPTION

TAKEOFF RUNWAYS 4, 13L/R, 22: Climb on assigned heading for RADAR vectors to RAECN INT, maintain 16000, expect filed altitude 10 minutes after departure, thence. . . .

TAKEOFF RUNWAYS 31L/R: Climb on heading 311° to 800 before turning, then climb on assigned heading for RADAR vectors to RAECN INT, maintain 16000, expect filed altitude 10 minutes after departure, thence. . . .

. . . .on IAH R-028 and the ELD R-208 to ELD VOR/DME, cross VELCO INT at or above 10000.

SC-5, 02 DEC 2021 to 30 DEC 2021

SC-5, 02 DEC 2021 to 30 DEC 2021