

HOODO SEVEN DEPARTURE (RNAV)

SC-5, 02 DEC 2021 to 30 DEC 2021

D-ATIS
124.6
CLNC DEL
125.45
CPDC
GND CON
121.9
HOBBY TOWER
118.7 256.9
HOUSTON DEP CON
127.125 269.075

NOTE: RNAV 1.

NOTE: RADAR required.

NOTE: ATC assigned only.

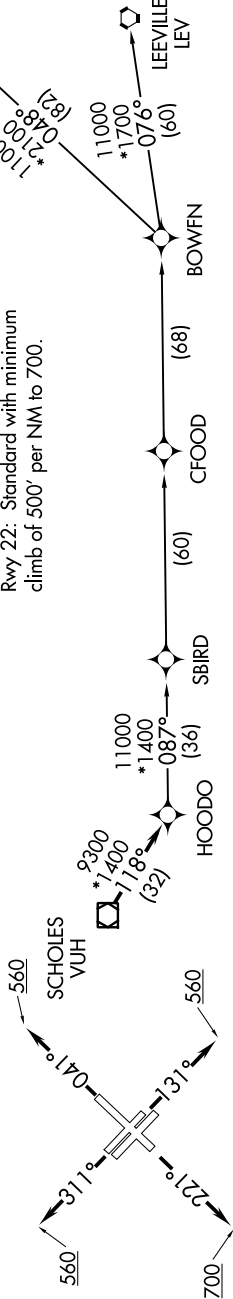
NOTE: DME/DME/IRU or GPS required.

NOTE: For non-GPS equipped aircraft, LCH, ILLA, TBD, and LEV DME's must be operational.

TAKEOFF MINIMUMS

Rwys 4, 13L/R, 31L/R: Standard with minimum climb of 500' per NM to 560.

Rwy 22: Standard with minimum climb of 500' per NM to 700.



TOP ALTITUDE:
16000

DEPARTURE ROUTE DESCRIPTION

TAKEOFF RUNWAY 4: Climb on heading 041° to 560, for RADAR vectors to VUH VOR/DME, thence

TAKEOFF RUNWAYS 13L/R: Climb on heading 131° to 560, for RADAR vectors to VUH VOR/DME, thence

TAKEOFF RUNWAY 22: Climb on heading 221° to 700, for RADAR vectors to VUH VOR/DME, thence

TAKEOFF RUNWAYS 31L/R: Climb on heading 311° to 560, for RADAR vectors to VUH VOR/DME, thence

. . . . on track 118° to HOODO, then on (transition). Maintain 16000.
Expect filed altitude 10 minutes after departure.

BOWFN TRANSITION (HOODO7.BOWFN)

CFOOD TRANSITION (HOODO7.CFOOD)

HARVEY TRANSITION (HOODO7.HRV)

LEEVILLE TRANSITION (HOODO7.LEV)

SBIRD TRANSITION (HOODO7.SBIRD)



NOTE: Chart not to scale.