

HUDZY FOUR ARRIVAL  
(HUDZY, HUDZY4) 100CT19

HUDZY FOUR ARRIVAL  
(HUDZY, HUDZY4) 21336

AL-198 (FAA)

HOUSTON, TEXAS

HOUSTON APP CON  
120.05 379.1  
CXO ATIS  
118.325  
DWH ATIS  
128.375  
EFD ATIS  
135.575 269.9  
HOU D-ATIS  
124.6  
IAH D-ATIS  
124.05  
SGR ATIS \*  
118.125  
TME AWOS-3  
119.525

LUFKIN  
112.1 LFK  
Chan 58

SAWMILL  
113.75 SWB  
Chan 84 (Y)  
N31°58.39-W92°40.63'  
L-22, H-6

BRWCK  
N30°35.23'  
W93°42.36'

ALEXANDRIA  
116.1 AEX  
Chan 108  
N31°15.40-W92°30.06'  
L-21-22, H-6

LAKE CHARLES  
113.4 LCH  
Chan 81

SABINE PASS  
115.4 SBI  
Chan 101

WAPPL  
N30°13.91'  
W94°19.84'  
VERTICAL NAVIGATION  
PLANNING INFORMATION

CLEVELAND MUNI

CLWSN  
N30°04.42'  
W94°55.13'

HUDZY  
N30°06.21'  
W94°48.53'  
TURBOJET:  
Expect 14000 280K

CONROE/NORTH  
HOUSTON RGNL

HUMBLE  
116.6 IAH  
Chan 113

SWWAA  
N30°00.52'  
W95°09.42'

DAVID WAYNE HOOKS MEML

GEORGE BUSH  
INTCNTL/HOUSTON

WEST HOUSTON

HOUSTON EXEC

BAYTOWN  
RWJ  
AIRPARK

CHAMBERS  
COUNTY

LA PORTE MUNI

WILLIAM P  
HOBBY

ELLINGTON

SUGAR LAND RGNL

HOUSTON/SOUTHWEST

PEARLAND  
RGNL

SCHOLES INTL  
AT GALVESTON

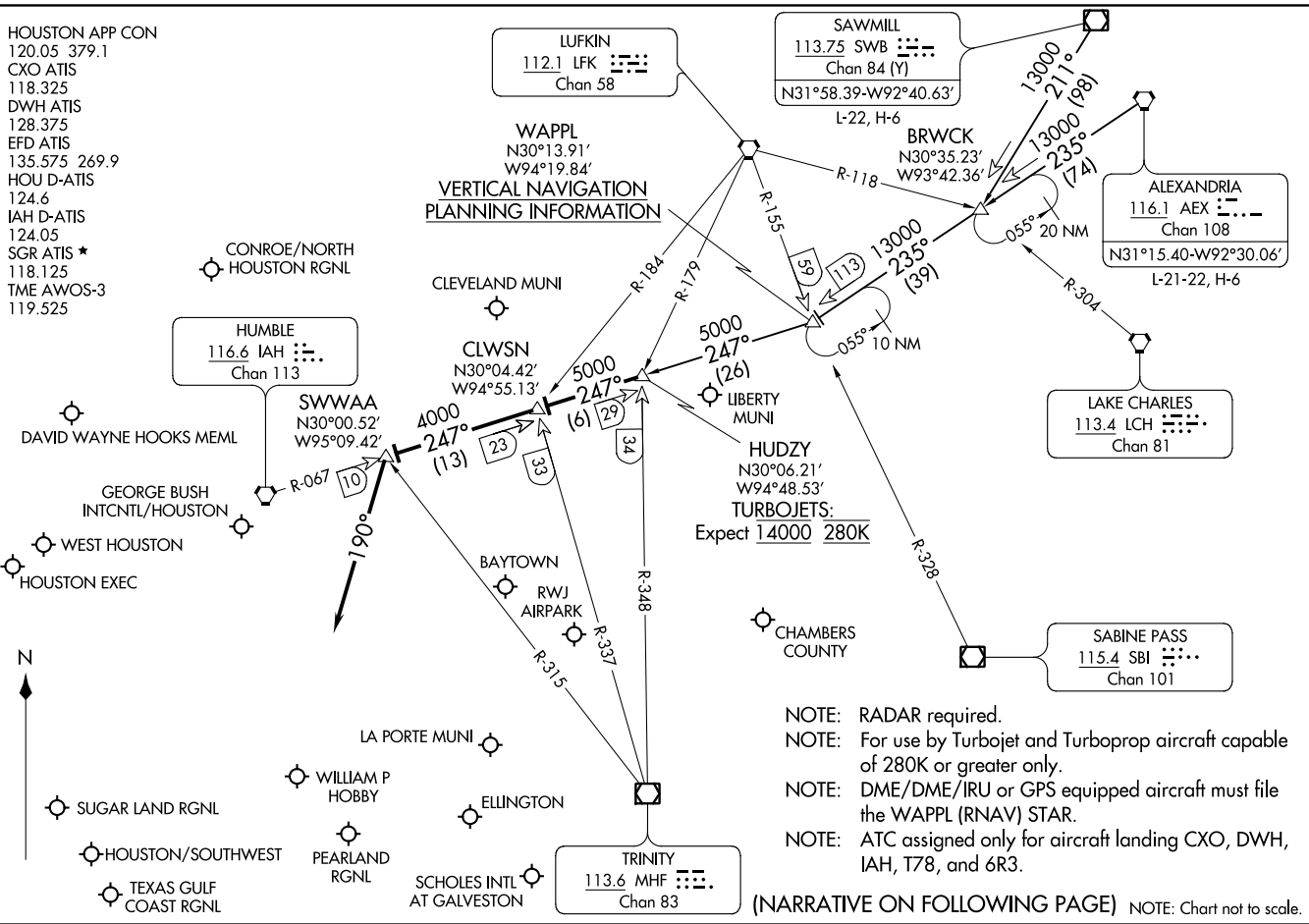
TEXAS GULF  
COAST RGNL

TRINITY  
113.6 MHF  
Chan 83

- NOTE: RADAR required.
- NOTE: For use by Turbojet and Turboprop aircraft capable of 280K or greater only.
- NOTE: DME/DME/IRU or GPS equipped aircraft must file the WAPPL (RNAV) STAR.
- NOTE: ATC assigned only for aircraft landing CXO, DWH, IAH, T78, and 6R3.

(NARRATIVE ON FOLLOWING PAGE) NOTE: Chart not to scale.

HOUSTON, TEXAS



ARRIVAL ROUTE DESCRIPTION

ALEXANDRIA TRANSITION (AEX.HUDZY4): From over AEX VORTAC on AEX R-235 to WAPPL, then on IAH R-067 to HUDZY. Thence. . . .

SAWMILL TRANSITION (SWB.HUDZY4): From over SWB VOR/DME on SWB R-211 to BRWCK, then on AEX R-235 to WAPPL, then on IAH R-067 to HUDZY. Thence. . . .

. . . .from over HUDZY on IAH R-067 to CLWSN, then on IAH R-067 to SWWAA, then on heading 190°. Expect RADAR vectors to final approach course.

SC-5, 02 DEC 2021 to 30 DEC 2021

SC-5, 02 DEC 2021 to 30 DEC 2021