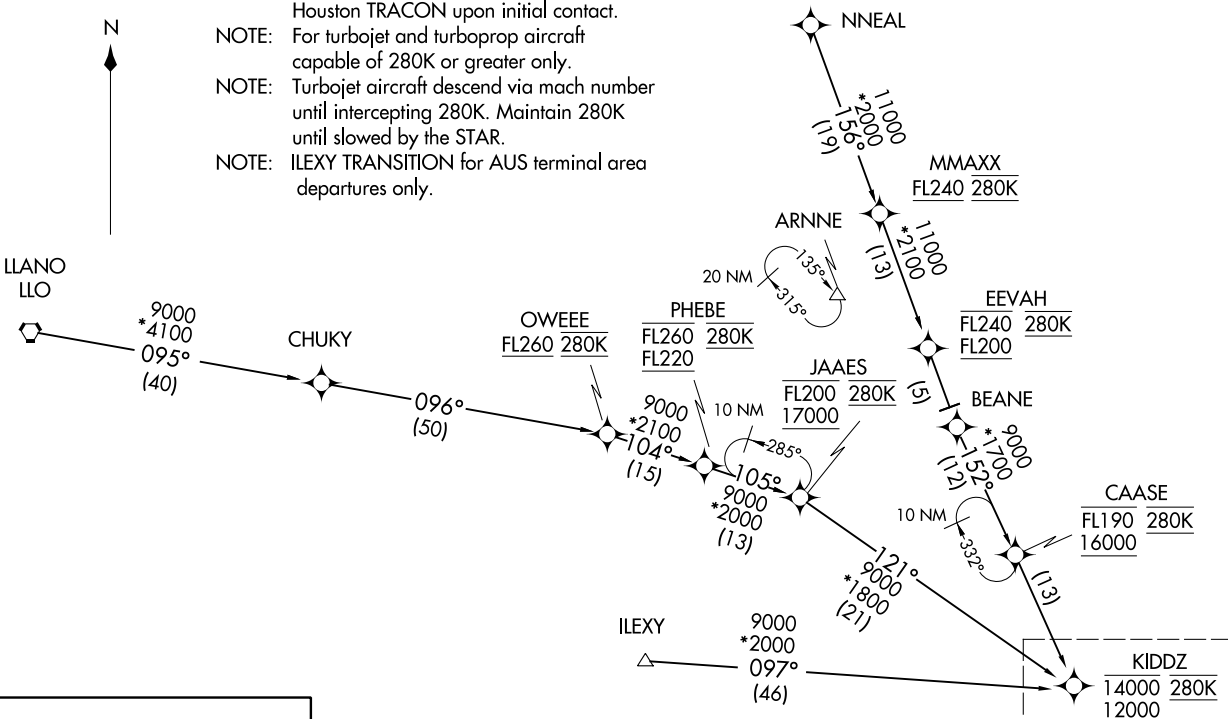


HOUSTON APP CON  
119.175 291.675  
D-ATIS  
124.6

RNAV 1- DME/DME/IRU or GPS.  
RADAR required.

- NOTE: Expect runway assignment from Houston TRACON upon initial contact.
- NOTE: For turbojet and turboprop aircraft capable of 280K or greater only.
- NOTE: Turbojet aircraft descend via mach number until intercepting 280K. Maintain 280K until slowed by the STAR.
- NOTE: ILEXY TRANSITION for AUS terminal area departures only.



ILEXY TRANSITION (ILEXY.KIDDZ4)  
LLANO TRANSITION (LLO.KIDDZ4)  
NNEAL TRANSITION (NNEAL.KIDDZ4)

NOTE: Chart not to scale.

(CONTINUED ON FOLLOWING PAGE)

KIDDZ FOUR ARRIVAL (RNAV) Transition Routes  
(KIDDZ.KIDDZ4) 07OCT21

WILLIAM P HOBBY (HOU)  
HOUSTON, TEXAS

(KIDDZ.KIDDZ4) 21280  
AL-198 (FAA)  
KIDDZ FOUR ARRIVAL (RNAV) Transition Routes

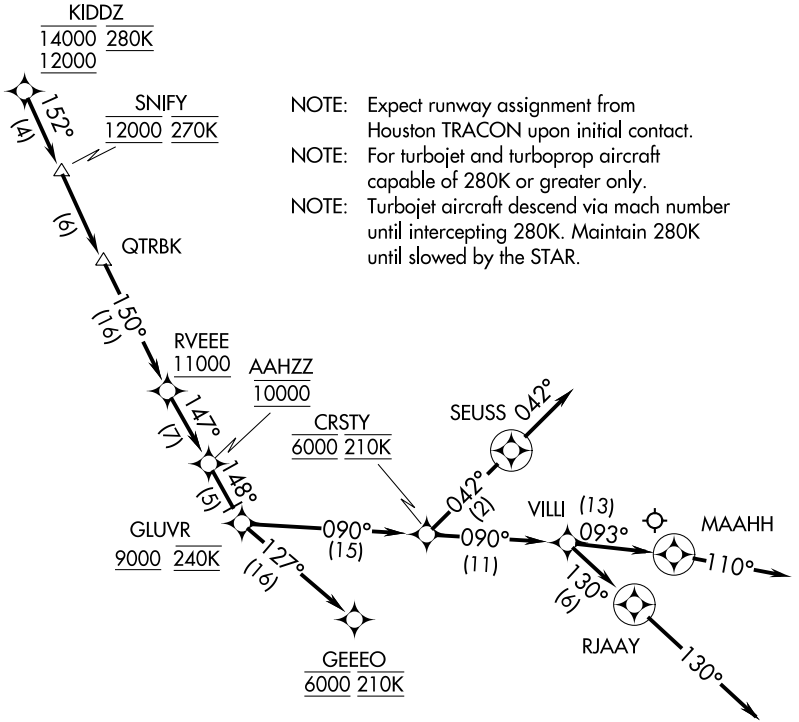
WILLIAM P HOBBY (HOU)  
HOUSTON, TEXAS

KIDDZ FOUR ARRIVAL (RNAV) Arrival Routes

HOUSTON APP CON  
119.175 291.675  
D-ATIS  
124.6

RNAV 1- DME/DME/IRU or GPS.

RADAR required.



- NOTE: Expect runway assignment from Houston TRACON upon initial contact.
- NOTE: For turbojet and turboprop aircraft capable of 280K or greater only.
- NOTE: Turbojet aircraft descend via mach number until intercepting 280K. Maintain 280K until slowed by the STAR.

SC-5, 02 DEC 2021 to 30 DEC 2021

SC-5, 02 DEC 2021 to 30 DEC 2021

NOTE: Chart not to scale.

ARRIVAL ROUTE DESCRIPTION

From KIDDZ on track 152° to cross SNIFY at 12000 and at 270K, then on track 152° to QTRBK, then on track 150° to cross RVEEE at or above 11000, then on track 147° to cross AAHZZ at 10000, then on track 148° to cross GLUVR at or above 9000 and at 240K.

LANDING RUNWAY 4: From GLUVR on track 127° to cross GEEEO at 6000 and at 210K. Expect ILS or LOC Rwy 04 approach.

LANDING RUNWAYS 13L/R: From GLUVR on track 090° to cross CRSTY at 6000 and at 210K, then on track 042° to SEUSS, then on track 042°. Expect RADAR vectors to final approach course.

LANDING RUNWAY 22: From GLUVR on track 090° to cross CRSTY at 6000 and at 210K, then on track 090° to VILLI, then on track 093° to MAAHH, then on track 110°. Expect RADAR vectors to final approach course.

LANDING RUNWAYS 31L/R: From GLUVR on track 090° to cross CRSTY at 6000 and at 210K, then on track 090° to VILLI, then on track 130° to RJAAY, then on track 130°. Expect RADAR vectors to final approach course.