

**TOP ALTITUDE:**  
16000

(PSX2.PSX) 21280  
**PALACIOS TWO DEPARTURE**

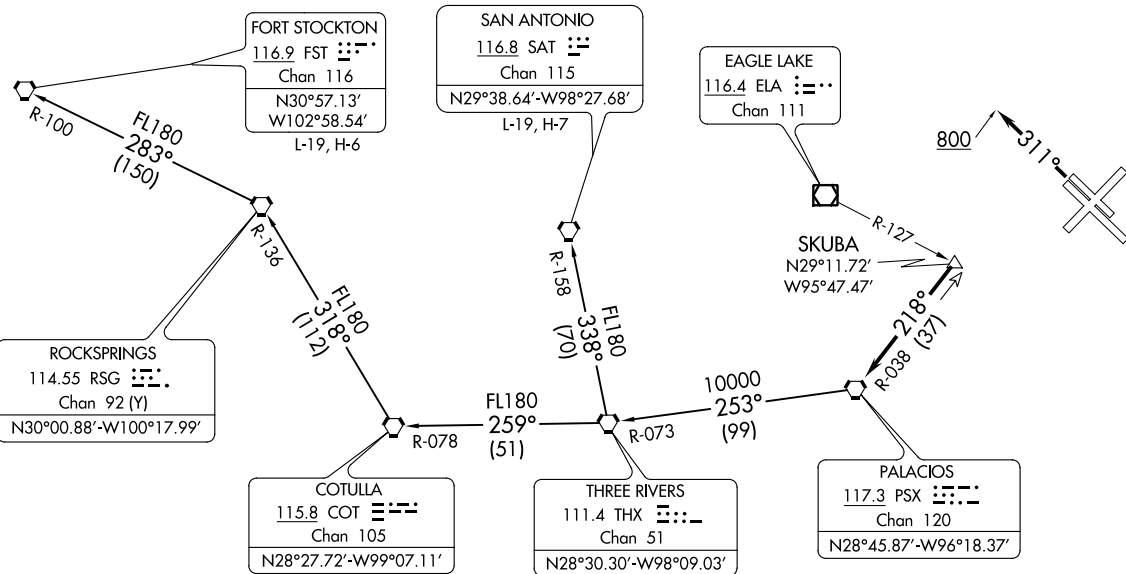
AL-198 (FAA)

**WILLIAM P HOBBY (HOT)**  
HOUSTON, TEXAS

**TAKEOFF MINIMUMS**

Rwys 4, 13L/R, 31L/R: Standard.  
Rwy 22: Standard with minimum climb  
of 290' per NM to 1500.

D-ATIS  
124.6  
CLNIC DEL  
125.45  
CPDLC  
GND CON  
121.9  
HOBBY TOWER  
118.7 256.9  
HOUSTON DEP CON  
127.125 269.075



NOTE: RADAR required.

NOTE: Chart not to scale.

(NARRATIVE ON FOLLOWING PAGE)

**PALACIOS TWO DEPARTURE**  
(PSX2.PSX) 07OCT21

**WILLIAM P HOBBY (HOT)**  
HOUSTON, TEXAS



DEPARTURE ROUTE DESCRIPTION

TAKEOFF RUNWAYS 4, 13L/R, 22: Climb on assigned heading for RADAR vectors to SKUBA INT, maintain 16000. Expect filed altitude 10 minutes after departure, thence . . . .

TAKEOFF RUNWAYS 31L/R: Climb on heading 311° to 800 before turning, then climb on assigned heading for RADAR vectors to SKUBA INT, maintain 16000. Expect filed altitude 10 minutes after departure, thence . . . .

. . . . on PSX R-038 to PSX VORTAC.

FORT STOCKTON TRANSITION (PSX2.FST): From over PSX VORTAC on PSX R-253 and THX R-073 to THX VORTAC, then on THX R-259 and COT R-078 to COT VORTAC, then on COT R-318 and RSG R-136 to RSG VORTAC, then on RSG R-283 and FST R-100 to FST VORTAC.

SAN ANTONIO TRANSITION (PSX2.SAT): From over PSX VORTAC on PSX R-253 and THX R-073 to THX VORTAC, then on SAT R-158 to SAT VORTAC.

SC-5, 02 DEC 2021 to 30 DEC 2021

SC-5, 02 DEC 2021 to 30 DEC 2021